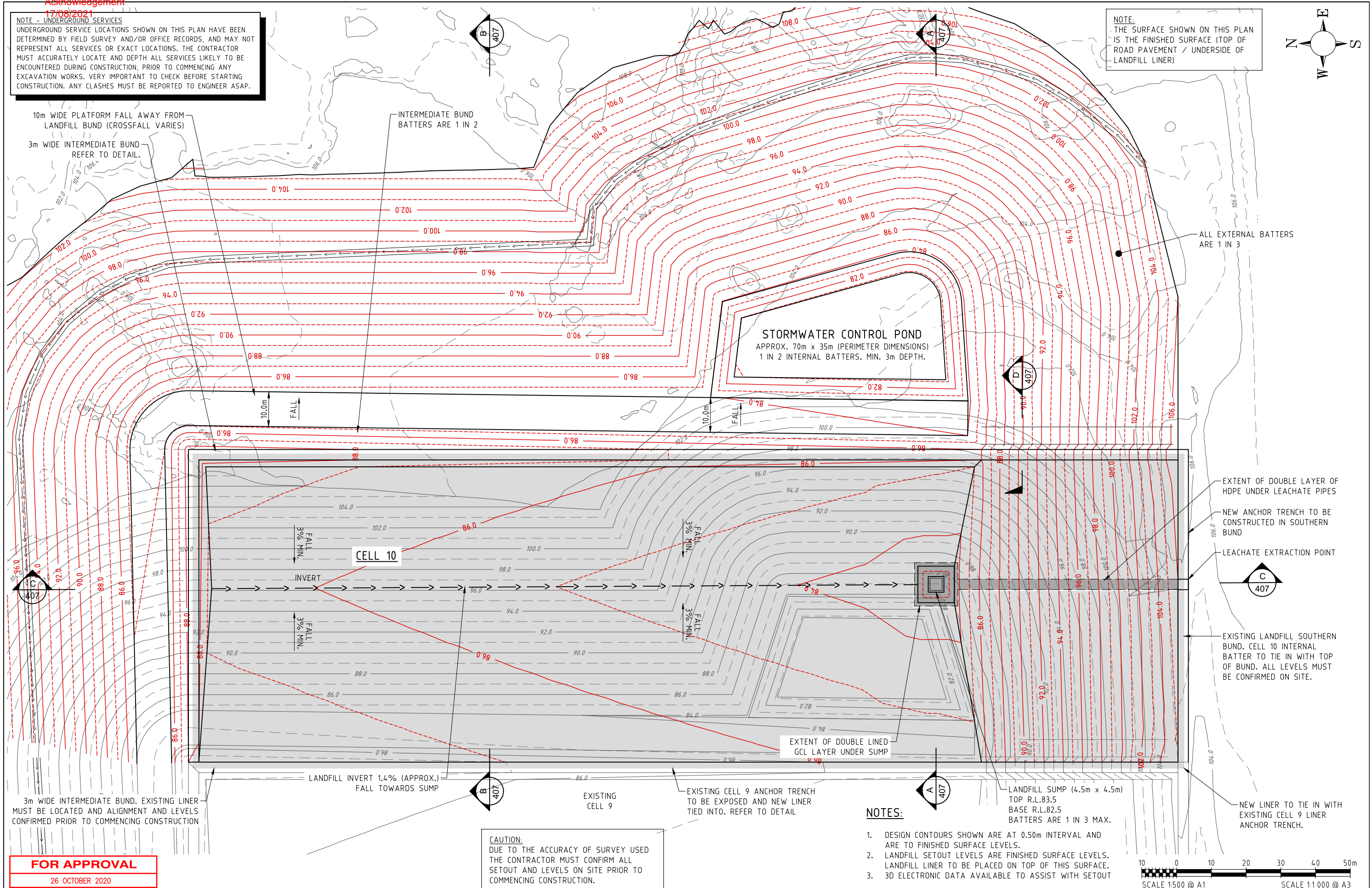
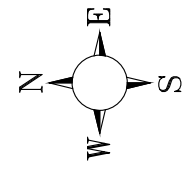


NOTE - UNDERGROUND SERVICES
 UNDERGROUND SERVICE LOCATIONS SHOWN ON THIS PLAN HAVE BEEN DETERMINED BY FIELD SURVEY AND/OR OFFICE RECORDS, AND MAY NOT REPRESENT ALL SERVICES OR EXACT LOCATIONS. THE CONTRACTOR MUST ACCURATELY LOCATE AND DEPTH ALL SERVICES LIKELY TO BE ENCOUNTERED DURING CONSTRUCTION, PRIOR TO COMMENCING ANY EXCAVATION WORKS. VERY IMPORTANT TO CHECK BEFORE STARTING CONSTRUCTION. ANY CLASHES MUST BE REPORTED TO ENGINEER ASAP.

NOTE:
 THE SURFACE SHOWN ON THIS PLAN IS THE FINISHED SURFACE (TOP OF ROAD PAVEMENT / UNDERSIDE OF LANDFILL LINER)



10m WIDE PLATFORM FALL AWAY FROM LANDFILL BUND (CROSSFALL VARIES)
 3m WIDE INTERMEDIATE BUND REFER TO DETAIL.

INTERMEDIATE BUND BATTERS ARE 1 IN 2

STORMWATER CONTROL POND
 APPROX. 70m x 35m (PERIMETER DIMENSIONS)
 1 IN 2 INTERNAL BATTERS, MIN. 3m DEPTH.

CELL 10

INVERT

EXTENT OF DOUBLE LINED GCL LAYER UNDER SUMP

EXTENT OF DOUBLE LAYER OF HDPE UNDER LEACHATE PIPES

NEW ANCHOR TRENCH TO BE CONSTRUCTED IN SOUTHERN BUND

LEACHATE EXTRACTION POINT

EXISTING LANDFILL SOUTHERN BUND, CELL 10 INTERNAL BATTER TO TIE IN WITH TOP OF BUND. ALL LEVELS MUST BE CONFIRMED ON SITE.

NEW LINER TO TIE IN WITH EXISTING CELL 9 LINER ANCHOR TRENCH.

3m WIDE INTERMEDIATE BUND, EXISTING LINER MUST BE LOCATED AND ALIGNMENT AND LEVELS CONFIRMED PRIOR TO COMMENCING CONSTRUCTION

LANDFILL INVERT 1.4% (APPROX.) FALL TOWARDS SUMP

EXISTING CELL 9

EXISTING CELL 9 ANCHOR TRENCH TO BE EXPOSED AND NEW LINER TIED INTO. REFER TO DETAIL

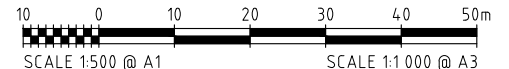
LANDFILL SUMP (4.5m x 4.5m)
 TOP R.L.83.5
 BASE R.L.82.5
 BATTERS ARE 1 IN 3 MAX.

FOR APPROVAL
 26 OCTOBER 2020

CAUTION:
 DUE TO THE ACCURACY OF SURVEY USED THE CONTRACTOR MUST CONFIRM ALL SETOUT AND LEVELS ON SITE PRIOR TO COMMENCING CONSTRUCTION.

NOTES:

- DESIGN CONTOURS SHOWN ARE AT 0.50m INTERVAL AND ARE TO FINISHED SURFACE LEVELS.
- LANDFILL SETOUT LEVELS ARE FINISHED SURFACE LEVELS. LANDFILL LINER TO BE PLACED ON TOP OF THIS SURFACE.
- 3D ELECTRONIC DATA AVAILABLE TO ASSIST WITH SETOUT



REVISIONS	No.	BY	DATE	DESCRIPTION
	A	S.B.Y.	26/10/20	ISSUE FOR APPROVAL

DRG. FILE	DATE	TECHNICALLY APPROVED:
DESIGN	10/20	
DRAWN	10/20	
DES. CHK.		
DWG. CHK.		

iw Projects

Copyright ©
 These designs and drawings are copyright and are not to be used or reproduced without the written permission of IWPROJECTS. The contents of this drawing are electronically generated, are confidential and may only be used for the purpose for which they were intended. This is an uncontrolled document issued for information purposes only, unless the checked sections are signed and approved.

Email - iwatkins@iwprojects.com.au
 Mobile - 0402 909 291
 Address - 6 Anembo Close Duncraig 6023

CLEANAWAY SOLID WASTE

BANKSIA ROAD LANDFILL FACILITY, DARDANUP WA

CELL 10 DEVELOPMENT

LANDFILL CELL 10 LAYOUT PLAN

SCALE	AS SHOWN
SHEET	
DRG No.	BANK-406