

DARDANUP PLACE PLAN



Shire of Dardanup
2023

The Shire of Dardanup acknowledges the Noongar people as the Traditional Owners of the land upon which the Shire is situated. In doing this, we recognise and respect their continuing culture and contribution they make to the life of this region and pay our respects to their Elders past and present.

Document ID: /Volumes/Graphics/Graphics/2022/22-016 - Dardanup, Eaton Foreshore, Civic & Community Precinct Masterplans and Place Plan/00 Graphic Design/Dardanup/02 Final/00 InDesign/22-016 SoD Dardanup Place Plan F9 221019 DC Folder/22-016 SoD Dardanup Place Plan F9 DC 221019.indd

Issue	Date	Status	Prepared by	Approved by	Graphics	
V1	07.06.22	Draft	Suzie Zuber, Emily Parsons, Iwan Isnin	Andrew Howe	MS	-
V2	10.06.22	Draft	Suzie Zuber, Emily Parsons, Iwan Isnin	Andrew Howe	MS	-
V3	08.07.22	Draft	Suzie Zuber, Emily Parsons, Iwan Isnin	Andrew Howe	MS	-
V4	12.08.22	Draft	Suzie Zuber, Emily Parsons, Iwan Isnin	Andrew Howe	CS & SA	F2
V5	13.10.22	Draft	Suzie Zuber, Emily Parsons, Iwan Isnin	Andrew Howe	CS & SA	F8
V6	21.10.22	Draft	Suzie Zuber, Emily Parsons, Iwan Isnin	Andrew Howe	CS & SA	F9
V7	28.06.23	Final	Suzanne Occhipinti, Cassandra Budge	Adopted by Council	CB	

This report has been prepared for the exclusive use of the Client, in accordance with the agreement between the Client and Element Advisory Pty Ltd (**element**) ('Agreement'). **element** accepts no liability or responsibility whatsoever in respect of any use of or reliance upon this report by any person who is not a party to the Agreement or an intended recipient. In particular, it should be noted that this report is a qualitative assessment only, based on the scope and timing of services defined by the Client and is based on information supplied by the Client and its agents. **element** cannot be held accountable for information supplied by others and relied upon by element. Copyright and any other Intellectual Property arising from the report and the provision of the services in accordance with the Agreement belongs exclusively to element unless otherwise agreed and may not be reproduced or disclosed to any person other than the Client without the express written authority of **element**.

CONTENTS

INTRODUCTION	1	Sub-precinct Plan 2: Civic Heart.....	38	APPENDIX C	77
Purpose and process	1	Context and Character	40	Engagement Summary	77
How to read this document.....	2	Dardanup Civic Sub-precinct Gaps and Opportunities	44	APPENDIX D	81
Strategically aligned.....	3	Sub-precinct Plan 3: Recreation Hub.....	48	Plant Species	81
Dardanup themes	3	Context and Character	49	APPENDIX E	83
F.A.C.T.S. lens	4	Dardanup Recreation Sub-precinct Gaps and Opportunities	51	Playground Audit.....	83
Assets lens.....	4	ACTIVATION	54	IMAGE CREDITS	95
OVERALL MASTERPLAN.....	5	Schedule of actions, projects and programming based on the Place and Community Plan 2020-2030	55	Opportunities Tables.....	95
Analysis Masterplan Scale	9	IMPLEMENTATION FRAMEWORK	58	IMAGE CREDITS	97
Dardanup Context and Character	9	Schedule of initiatives, actions, partnership opportunities, infrastructure, associated costs, timing and beneficiaries.....	59	Palettes.....	97
Overall: Dardanup Masterplan Gaps and Opportunities	17	APPENDICES	74		
PRECINCT PLAN	21	APPENDIX A	75		
Context and Character	24	Smart Technology Summary Table.....	75		
Dardanup Townsite Precinct Gaps and Opportunities	27	APPENDIX B	76		
SUB-PRECINCT PLANS.....	31	Monitoring and Review	76		
Dardanup Townsite's three Sub-precincts.....	31				
Sub-precinct Plan 1: Commercial Centre	32				
Context and Character	34				
Dardanup Commercial Sub-precinct Gaps and Opportunities	36				

INTRODUCTION

PURPOSE AND PROCESS

Distinctly Dardanup

Dardanup is a progressive and passionate community. It is ready to embrace growth and creative innovation that will support sustainable outcomes and complement its rich natural and rural heritage. There have been recent positive steps in the town's place making with funding secured to revitalise the former Shire depot site including a new 'play trail' and opening up connections to the surroundings. This Place Plan will ensure that all improvements are enduring and reflect the distinct character of Dardanup; telling compelling stories of, and contributing to, the sense of place.

This Place Plan and Masterplan covers Dardanup townsite and Dardanup West, a rural residential lifestyle neighbourhood connecting to the central townsite. The Precinct Study focuses on the Dardanup townsite as the heart of this expanding residential community. Place Plans may be developed for other precincts within the Dardanup area in the future.

Big picture thinking

This Place Plan is designed as an overarching strategy for the Dardanup locality with a focus on the Dardanup townsite as a distinctive character precinct. A place-based approach for Dardanup will support the community on its pathway to achieving its unique goals and visions.

Place Plans are collaborative, considered and iterative. In the aim of mitigating ad hoc development, the process towards creating such concise and cohesive summaries is complex. However in short, it journeys through research including literature review, identification, development and eventual implementation and management by the Shire of Dardanup. Application of current best practice and consultation with key community stakeholders included the Gnaala Karla Booja Native Title Claim Group and the Dardanup Advisory Group among many others. This assisted with identifying the unique qualities of Dardanup and refined the community's priorities for the area.

This document captures qualities of the local social, cultural, and physical character that defines Dardanup's unique sense of place. The document characterises and frames future staged development, improvements, investments, actions, initiatives and activation. It provides a prioritised framework that will support neighbourhoods and communities in their enjoyment of increased quality of life, an active and healthy lifestyle, and their ability to age in place.

It is a living document designed to evolve to reflect changing community needs. As such, it should be reviewed and updated periodically with the community.

The delivery of initiatives may be short to medium term or up to 20 years. This is a long term plan to upgrade and revitalise Dardanup.

HOW TO READ THIS DOCUMENT

Overall Masterplan. This section and plan geographically locates the place within its region. This section analyses the overarching context and character, and explores gaps and opportunities at this scale.

Precinct Plan. This section and plan is the next level drill-down and geographically locates the Precinct and Sub-precincts identified within Dardanup. The section analyses the local context and character, and explores gaps and opportunities at this scale.

Sub-precinct Plans. This section and its plans is a further level drill-down and geographically locates all three Sub-precincts within Dardanup. This section analyses the local context and character, and explores gaps and opportunities at this scale.

Activation Strategy. This section outlines a schedule of actions, projects and programming based on identified opportunities that have arisen as activation ideas throughout the process.

Implementation Framework. This section is a summary of the opportunities identified in the previous sections to assist the Shire in planning the implementation of the initiatives. It should be printed at A3.

Document structure



Typical opportunities table

X - Table Number	X - Table Subject (often by location or clustered into groups on-site) (x) - Local Government Asset/Works Department	
Priority	Explains the issue / gap identified	
Action	Explains the high-level steps / possible solution	
Opportunity	x Explains the ideas for place developments. The bold text is the main notion / key words	
	x Explains another opportunity but listed separately to above because these are distinct items in the Implementation Plan table at back of document that all need their own cost / stage line item	
F.A.C.T.S	Facilities	Quick key words under a heading if the opportunity is ticking one of these boxes in this acronym.
	Activities	
	Character	
	Technology	
	Services	

Images are examples for the above ideas



Image number, see image credit section at the back of the document

STRATEGICALLY ALIGNED

The Place Plan is a consolidation of previous work by the Shire:

- **Shire of Dardanup Our Plan For The Future - Council Plan 2022-2032** (endorsed 2022).
- **Dardanup Community Facilities Plan** (endorsed 2021).
- **Shire of Dardanup Place and Community Plan 2020-2030** (endorsed 2020).
- **Shire of Dardanup Strategic Community Plan 2020-2030** (endorsed 2020).
- **Shire of Dardanup 2050 Vision** (endorsed 2021).



The Shire's **2050 Vision** describes a future 'healthy, self-sufficient, sustainable community that is connected and inclusive, and where our culture and innovation are celebrated.'



The Shire's **Strategic Community Plan 2020 - 2030 (SCP)** identifies core community values that frame the Shire's plan for the future:

- Maintaining a balanced respect for natural assets and built environment, while retaining lifestyle values, community spirit and identity.
- Provision and maintenance of facilities, infrastructure, and services to promote the Shire as an attractive and desirable place to live.
- A safe and vibrant community which is inclusive and welcoming for all ages and interests.



The Shire's **Place and Community Plan 2020 – 2030 (PCP)**, qualifies the SCP's third objective by expanding into key focus areas:

1. **Empowered and actively engaged community:** informed, connected, engaged, participatory.
2. **Sustainable and resilient community:** active, healthy, safe, fosters leadership and independence.
3. **Accessible and inclusive community:** inclusive, livable; with access to health, community and social services.
4. **Vibrant and connected community:** involvement in 'community life' and strong sense of community pride.
5. **Distinctly Dardanup (Shire of) community:** strong sense of identity, creative, fosters cultural and artistic activity and diversity.

DARDANUP THEMES

The three guiding themes identified to support the unique place identity of Dardanup complement the Place and Community Plan (PCP) community qualities. They are:



SAFE AND CONNECTED – a network of local destinations and connections that serve local community needs. A place that nurtures all life stages from childhood to retirement.



CELEBRATING LOCAL – proud and vibrant. Actively celebrates the unique local heritage, produce, creative talent, culture, and sport.



GATEWAY TO THE FERGUSON VALLEY – a welcoming gateway to a wider tourism trail; an undiscovered oasis to linger in, not just pass through.



F.A.C.T.S. LENS

This Place Plan also refers to F.A.C.T.S. throughout, which stands for:

- **Facilities** – the Dardanup Community Facilities Plan is updated periodically (support for needs, activities, and services in places).
- **Activity** – Events and activities are to be updated periodically (sets out actions and projects for enhancing activation and economics in place).
- **Character** – Definition and broad design guidelines (history, design, elements for unique sense of place).
- **Technology** – Opportunities for smart technologies (smart technology to assist in the delivery of facilities and services within the place).
- **Services** – Local Government and Utilities (support walkability and connectivity for a pedestrian and cycle friendly town).

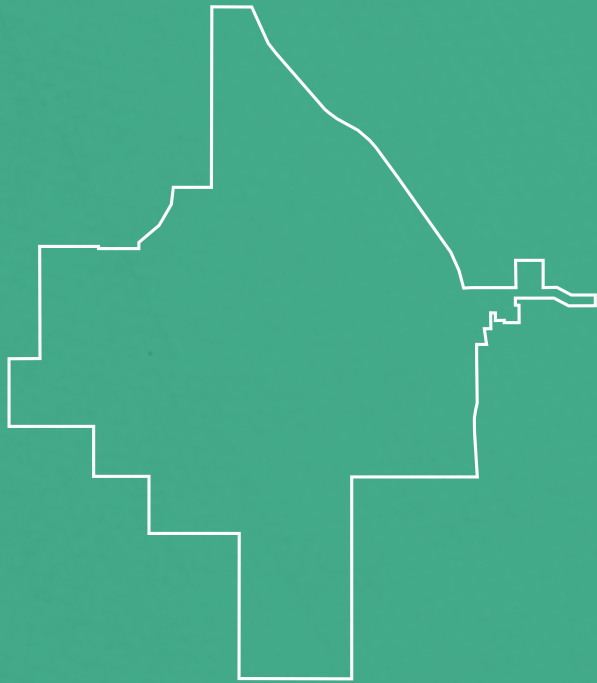
Opportunities for implementation are described and may include mention of:

FACILITIES	ACTIVITIES	CHARACTER	TECHNOLOGY	SERVICES
Buildings/Built form	Events	Gateway markers	Fabrication (smart)	Pathways/Walkways
Sporting	Celebrations	Wayfinding elements	Digital signs (smart)	Roads/Traffic
Play	Programs	Paving	Lighting (smart)	Parking
Exercise equipment	Schemes	Amenities	Recycling waste	Laneways/ Pedestrian Access Ways (PAWs)
Parks/Public realm	Economic	Bespoke elements		Drainage
Community streets	Cultural	Art		Irrigation
Shade	Actions	Planting		Utilities eg underground
	Partnering	Environment		Governance
	Tourism	Visuals		
		Materials of character		
		Unique fabrication		
		One village notion		

ASSETS LENS

The other lens that this Place Plan must be read through is the Local Government Assets/Works departments i.e. Infrastructure, Community, Public Realm, and Built Environment.

OVERALL MASTERPLAN



OVERALL MASTERPLAN

OPPORTUNITIES TABLE

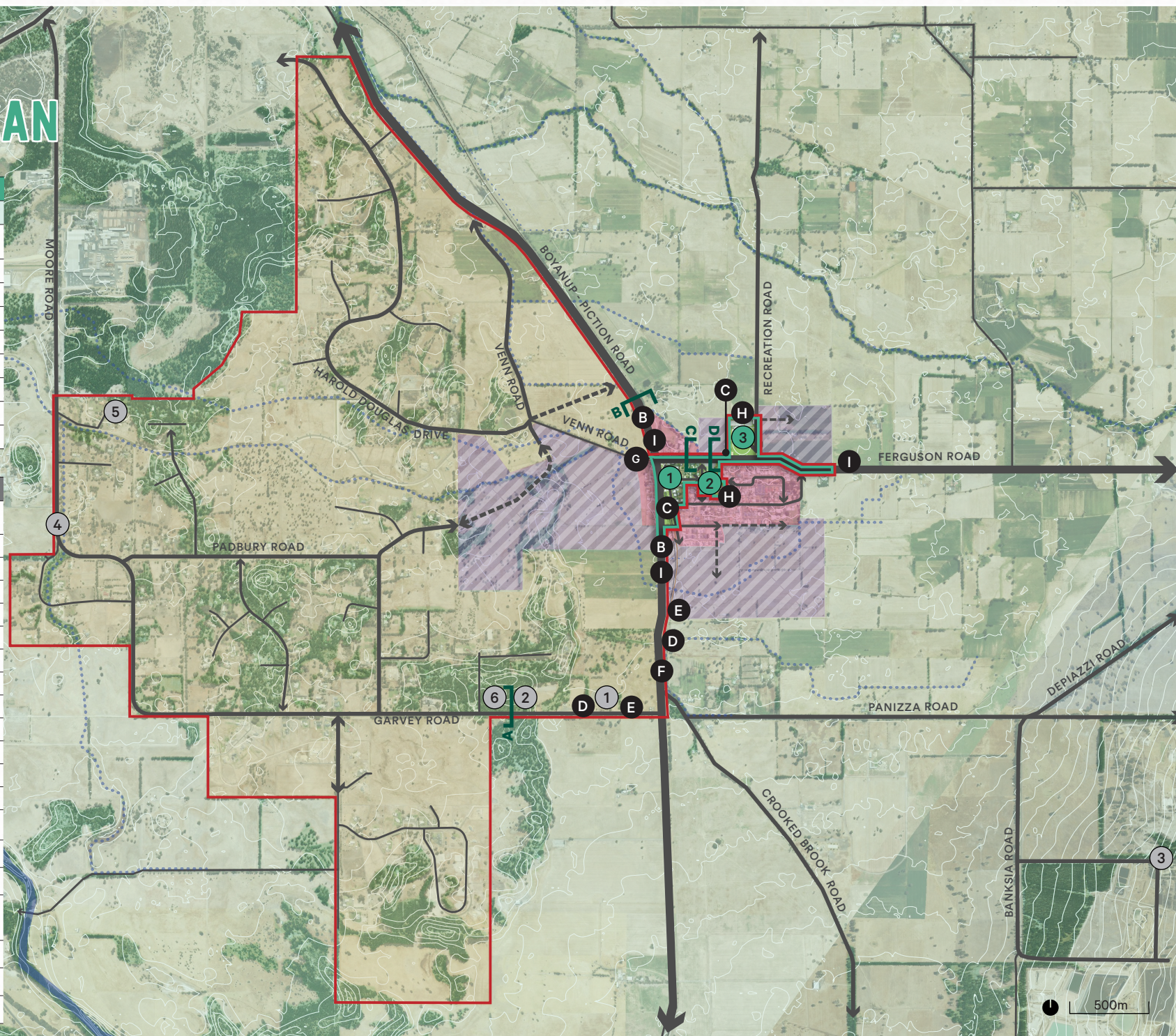
Code	Opportunity	Table
A	Strategic docs (not on plan)	D1
B	Traffic calming	D2
C	Street trees	D2
D	Shared pathways	D3
E	Interpretive signs	D3
F	Pedestrian crossing	D3
G	Venn Rd closure	D3
H	Event space	D4
I	Gateway markers	D5

LEGEND

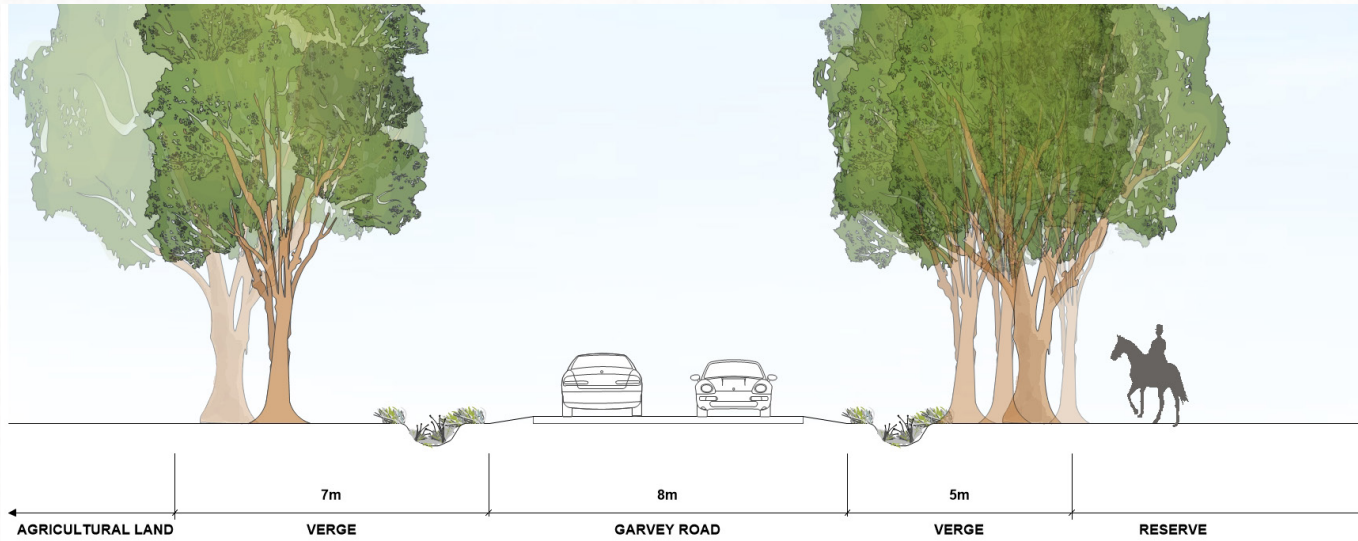
- X Refer to Opportunities Table
- Overall Masterplan boundary
- Precinct Plan boundary
- 1 Commercial Sub-precinct
- 2 Civic Sub-precinct
- 3 Recreation Sub-precinct
- Dardanup townsite
- Dardanup West
- Future residential
- Major road
- Distributor road
- Local road
- Future connections

PLACES

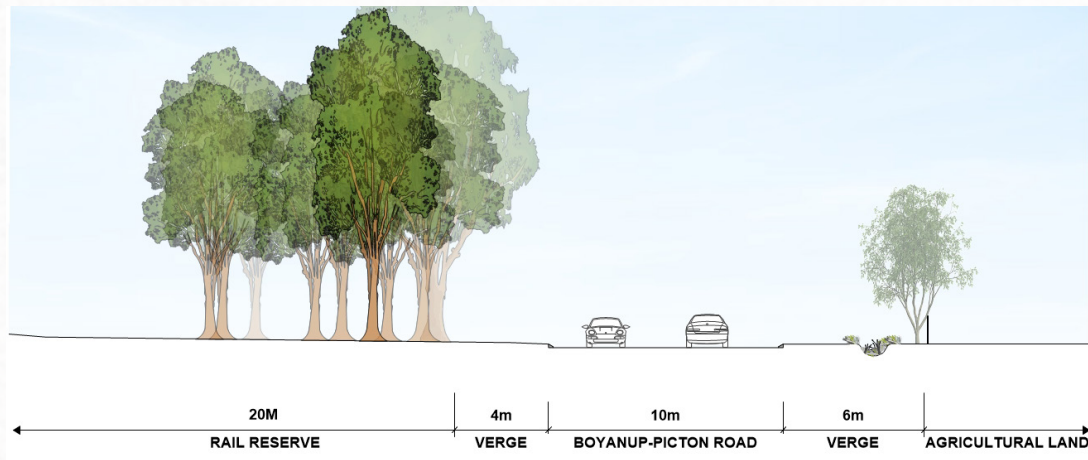
- 1 Dardanup Equestrian Club
- 2 Dardanup Cemetery
- 3 Dardanup Waste Transfer Station and Recycling Centre
- 4 Dardanup Heritage Park
- 5 5th Element Studio & Gallery
- 6 Star Flower Reserve



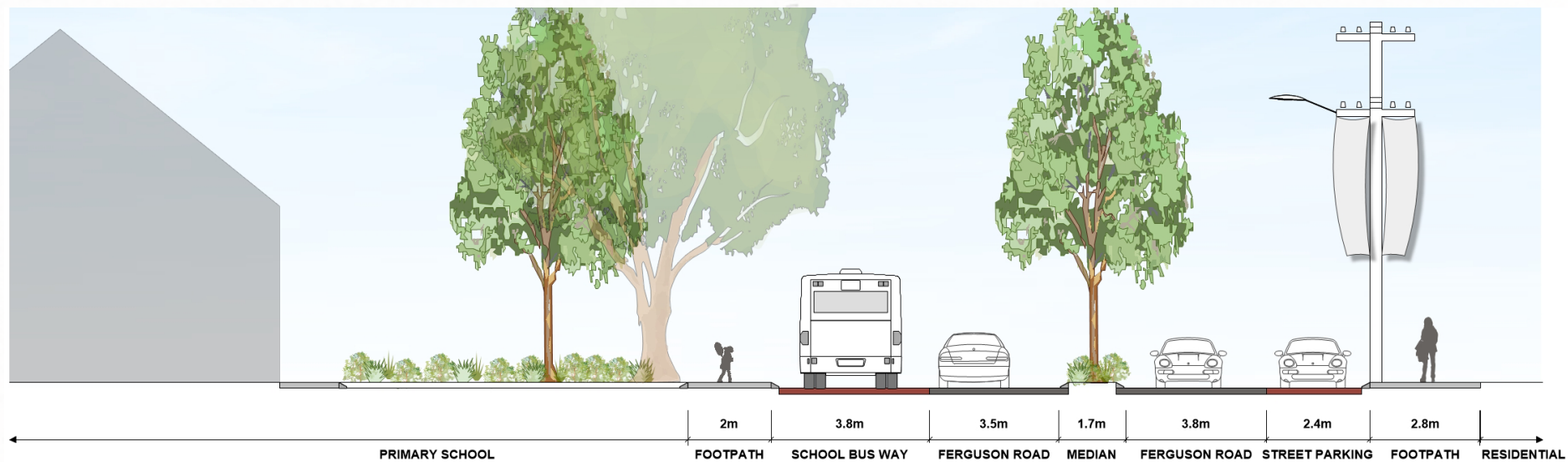
Cross sections



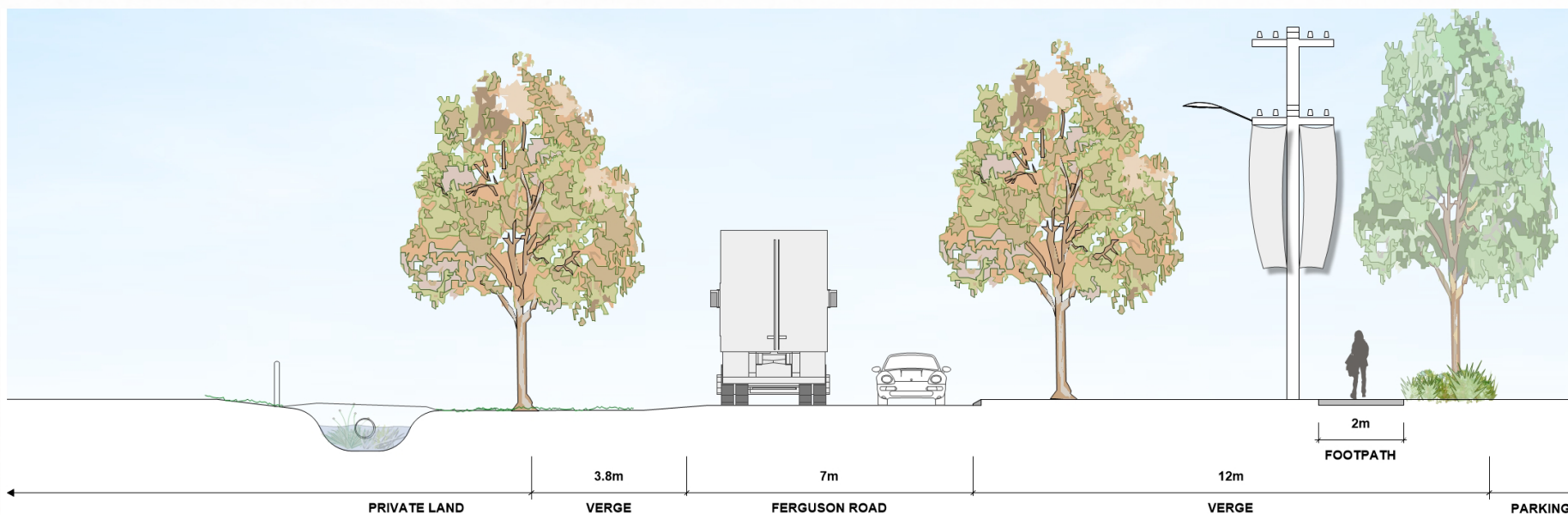
SECTION A - GARVEY ROAD LOOKING WEST



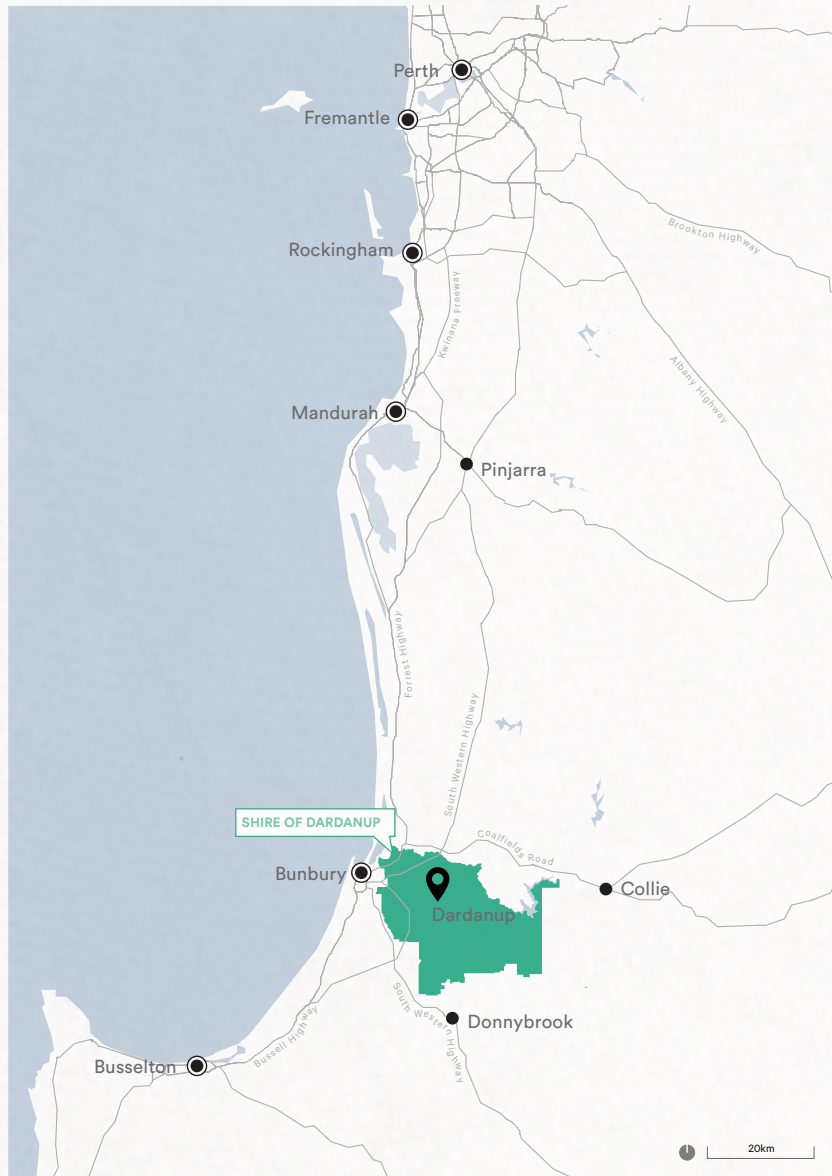
SECTION B - BOYANUP-PICTON ROAD LOOKING SOUTH



SECTION C - FERGUSON ROAD LOOKING EAST



SECTION D - FERGUSON ROAD LOOKING EAST



ANALYSIS MASTERPLAN SCALE

Dardanup Context and Character

Dardanup is a quintessential small, healthy Australian farming town. It boasts a tough pioneer history respected for its fair dealing.

Context

Dardanup is a pastoral town within the Shire of Dardanup in Western Australia, approximately 175km or just under 2 hours' drive south of Perth, and 15km east of Bunbury. It is one of the smaller towns within the Shire, the townsite constituting just 0.1% of the total Shire area (~50ha of ~52,000ha).

Nearby neighbouring suburbs are Paradise, Burekup, West Dardanup, Crooked Brook, Henty and Ferguson Valley.

Dardanup is on a precipice of growth due to its increasing population and popularity of the lush offerings of Ferguson Valley, to which it acts as a gateway. It is a community and tourist's paradise – a great place to meander along the tourist trails at the base of the hills.

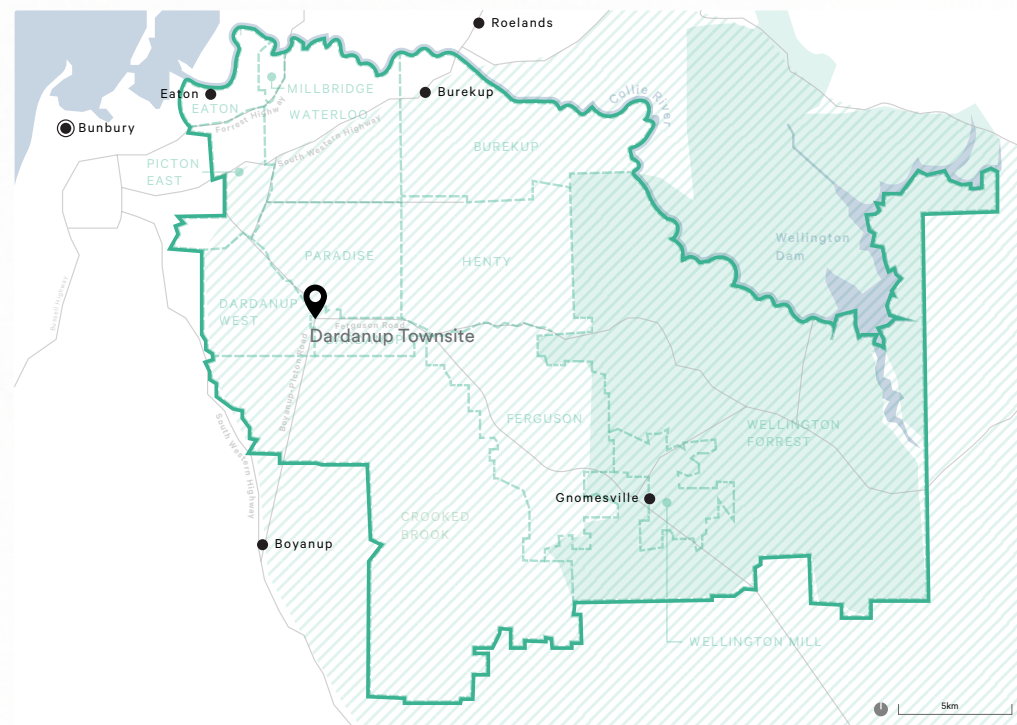
Rural retreat

Dardanup town is enviably positioned at the gateway to the Ferguson Valley, a valley of rolling hills, meandering rivers, and fertile farmland. The Valley and its surrounds are renowned for winding tourist drives unveiling many beautiful green hills, dells and natural views. Nestled into the foothills, the central townsite feels low and flat in comparison, with wide and often wet expanses of pastureland and public open space.

The place has personality and heritage borne of its geographical location. Its fertile lands attracted early settlement by Irish and Italians rearing horses and cattle, harvesting grain tending to vines, and logging timber.

The proximity to Bunbury and Perth is increasingly felt as urban centres expand to meet growing residential and commercial demand. Dardanup has great potential due to this proximity and its picturesque verdant surrounds, complemented by the rustic charm of a small home-grown farm town.

Dardanup is identified for expansion under the Local Planning Strategy (LPS), Town Planning Scheme 3 (TPS3), and 'Dardanup Townsite Expansion Strategy 2009' document. This will accommodate future residential growth north and south of town in Roselands Estate and Dardanup West, and schools will expand as triggered (as per the Recreation Drive Structure Plan).



Legend

- Shire of Dardanup Shire Boundary
- Shire of Dardanup Locality
- Ferguson Valley
- Wellington National Park
- Major Roads

Deeply connected to Country

Dardanup sits within Noongar Boodjar (Country), near the meeting point of a number of language groups: Wardandi, Wilman, Kaneang, and Pindjarup.

Spiritual connection to Country is strongly linked to the Collie River, north of Dardanup. Creation stories speak of the Wargal “hairy faced serpent” flowing from the north of Collie, towards Eaton forming the Collie River. It wound its way near Burekup, north of Dardanup, then, when it reached Eaton, turned its body away from the salty water creating the estuary, and travelled back inland.¹

“Dudingup” may have been the original name for the area, meaning “place of the **swampland reed**.” Indigenous people would have spent the winter in the hills looking high over the land before travelling through the warmer seasons to the coast, possibly via the Dardanup area.

Koorliny Beelya ‘water going along’

The Collie River Heritage Trail along the Eaton Foreshore promotes the cultural identity and history of the Pindjarup, Wilman and Wadandi people. Elder Joe Northover reflects on the unique and spiritual relationship the local Aboriginal people have with the Boodjar (land) and Beelya (river).
<https://www.dardanup.wa.gov.au/our-shire/tourism/collie-river-heritage-walkway/>

¹ https://www.water.wa.gov.au/__data/assets/pdf_file/0016/5443/91172.pdf
<https://www.dardanup.wa.gov.au/our-shire/tourism/collie-river-heritage-walkway/>

Rise of agriculture

Little foundations

The first European pioneer of Dardanup was Catholic Irishman Thomas Little, sent to Western Australia in 1838 by Charles Prinsep, Advocate General of Bengal to invest in land to breed horses. In 1851 Little built his homestead ‘Dardanup Park’ on land previously farmed by his friend Rev John Wollaston. Little bred and raced horses, ran livestock, grew grain and made wine, exporting to India and Britain. The first of many future horseraces was held at Dardanup Park in 1857.

Little encouraged more Irish immigrants to settle in Dardanup, seeding the growth of farming across the area. This growing Roman Catholic and Anglican community led to churches and other civic buildings being built: including the original Catholic Church, now known as the Thomas Little Memorial Hall. The new Catholic Church is located west of the original church building and still pays homage to the original building in its name, ‘Our Lady of the Immaculate Conception.’

Timber and rail

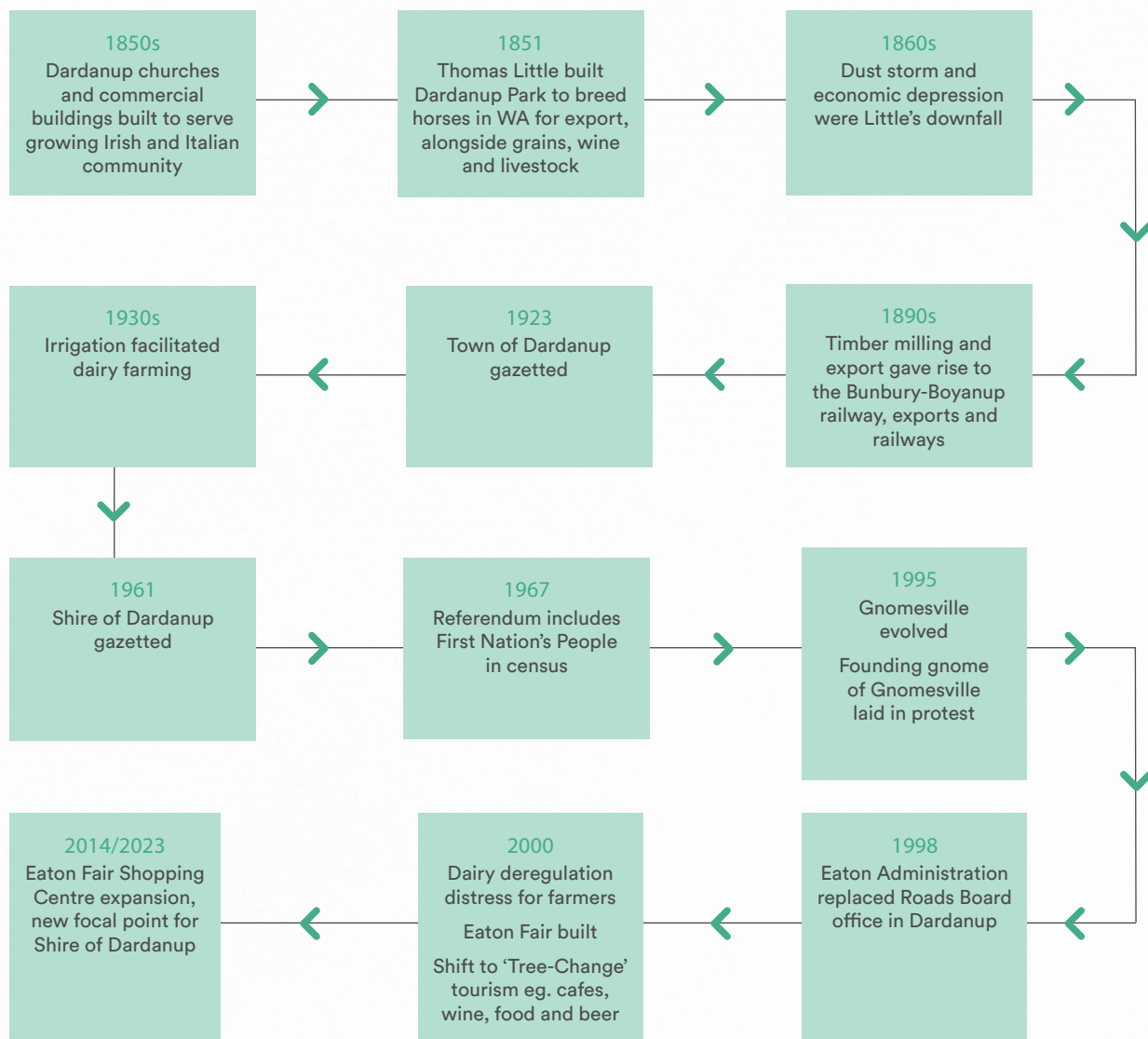
After a period of economic depression in the 1860s, a shift to timber milling in the late 1870s and 1880s lifted the local economy back onto its feet. Production in local mills demanded efficient transport, giving rise to new rail connections in the 1890s: Perth-Bunbury and Bunbury-Boyanup lines for agriculture, and the Dardanup-Bunbury line for passengers. Dardanup thrived as a result of the timber industry, and an Agricultural Hall (now gone), the Post Office and Temple-Poole’s old State School all contribute to Dardanup’s treasured heritage.

Dairy and tourism

The 1920s and 1930s saw a growth in viticulture and orchards. The extension of irrigation in the region in 1933/34 sustained a growing dairy industry supported by vegetable and fruit growing, boosted during World War II by the Women’s Land Army. This strong agricultural economy lasted until the deregulation of the dairy industry in early 2000s. This seeded a shift, becoming a ‘tree-change’ destination for those seeking opportunities to create local produce and tourism related ventures.

Gnomesville evolved in the 1990s, once a creative protest, now a popular and iconic tourist destination. The Crooked Brook Forest Project commenced in 1994 to provide accessible walking trails across the valley.

In recent years, as parts of the Shire have transitioned to urban development, typified by the expansion of Eaton Fair, Dardanup townscape managed to retain its semi-rural village character rooted in agriculture.



Dardanup's social fabric²

Dardanup is a strongly engaged, proud, healthy community who value each other, our family, our environment, and history. We love our sports, the arts and to celebrate our rich regional diversity and vibrancy in our annual Bull and Barrel Festival.



Our Cultural Values

- + Integrity
- + Purpose
- + Grounded
- + Substance
- + Humility
- + Remembrance
- + Progressive
- + Passionate

² ABS 2021 data

³ The wider area is covered by a Designated Area Migration Agreement (DAMA) under the Department of Home Affairs



Context palette



Character

Built form

The residential lots are predominantly occupied by large family homes set back from the street and partly obscured by tree-lined country roads.

Public realm

The wider area of Dardanup is characterised by a series of rural residential cul-de-sacs feeding off local access roads. The layout is organic, wide open and generous. Patterns include linear access ways and drainage channels peppered with trees. Lots are very large and mostly front loaded with single gravel driveways that cross over culvert pipes. Roads are simple, wide and utilitarian.

In the broader area there is little to no formalised public open space (POS) or play other than in private yards, nor public amenities like street furniture or resting places. Wayfinding is via road signs.

Environment

Climate: The region is characterised by diverse seasons and micro-climates resulting from the elevated rolling hills, cool sheltered valleys, and mild ocean breezes off Geographe Bay. It is hotter in summer than the coast but colder in winter.

Temperatures: 15-25 degrees celsius average.

Rainfall: Mean of ~800mm per year collected over ~80 days.

Soil: Wet, alluvial and clay-like, poorly drained.

Water: Dardanup sits in the Leschenault catchment area. It lies in the floodplain and flows would direct to the Preston River. Areas can flood in winter.

Landscape: Forest, open space, parks, waterways and farmland. Topography is level and the place feels open and wide.

Vegetation: The surrounding woodland would once have been thick with Grass Trees, and dotted with the tree types of Jarrah, Marri, Wandoo, Paperbark, Sheoak and Flooded Gum. Now the locality is dominated by non-endemic trees like Lemon-Scented Gum, Ash, Jacaranda, Queensland Box Tree, Olive, Citrus (and other orchard fruit trees). There is minimal understory/groundcover and some rambling vines including roses and grapes.

Local produce: Dardanup is famous for its dairy, beef and pies, with a regionally acclaimed baker in town drawing tourists to stop at Dardanup on their south-west holiday migration. The Geographe wine region stretches from the south west coast to the Ferguson Valley, one of WA's most captivating and diverse wine regions, boasting many boutique family-owned wineries and craft breweries where tasty food might include marron caught in the upper rivers nearby.

Landscape assessment

- Now a landscape significantly modified from its pre-cleared natural character.
- An agricultural landscape of green pastures.
- Dardanup townsite is regionally connected by Boyanup-Picton Road (running north-south) and is the western gateway to Ferguson Valley via Ferguson Road, which heads east into this undulating rural and forested landscape.
- Residential developments and expansion beyond Dardanup townsite lie predominately to the west.
- Remnant endemic trees are still represented in the paddocks, along boundary lines and in areas subject to inundation.
- Exotic, deciduous trees are evident within the townsite, that bring autumn colour.
- The townsite and surrounding areas are predominately flat, in contrast to the Ferguson Valley further east.

Sense of place

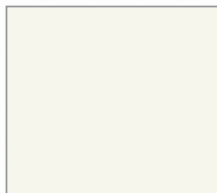
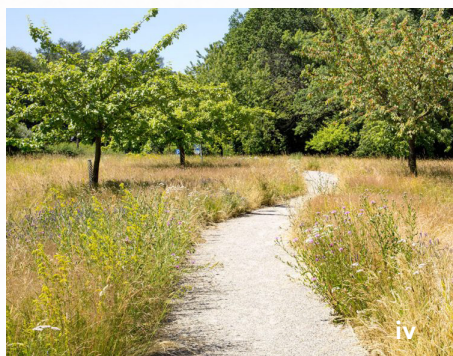
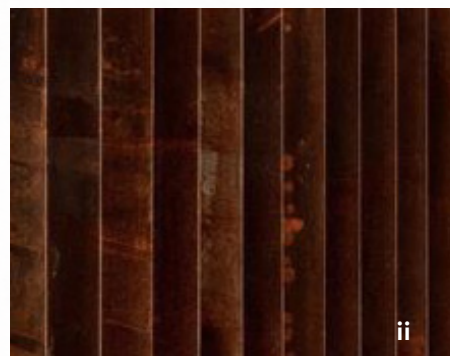
Dardanup has a rustic rural character

Dardanup's overall character is defined by its wider picturesque rural landscape, rural purpose and resulting expansive agricultural scale:

- It has low, flat and wide open spaces, green grassy paddocks dotted with cattle, horses and the sporadic retention of mature trees, memories of the former woodland that once covered the area.
- Natural rolling forms are controlled by long straight lines from fences, rail, streets, pathways, power lines, drainage channels and windbreak belts.
- Seasonal changes are felt in the bare wet winters by the fire to hot dry summers when the grass turns to hay.
- Important heritage places (many are on the register) include the stone buildings with rambling vines and rusty agricultural relics.

Overall place palette

The place palette should be considered in the general urban design of the place, e.g. landscaping, footpaths, amenities and public art, etc.



Overall: Dardanup Masterplan Gaps and Opportunities

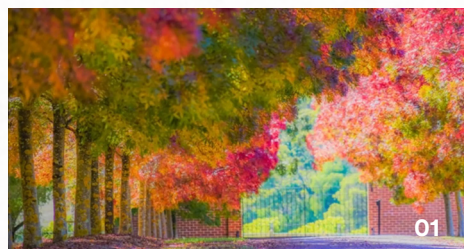


Theme – Safe and Connected

The expansion of Dardanup townsite beyond the adjacent distributor roads has impaired the connectedness of the community. The arterial roads, Boyanup-Picton Road and Ferguson Road, carve through the Dardanup locality, dividing the communities of Dardanup West from Dardanup townsite, and the townsite from the community amenities north of Ferguson Road.

D1 Further strategic investigations and strategies (All Assets Areas)					
Priority	The Shire needs a suite of guidance documents/strategies to support the coordinated delivery of the Place Plan priorities.				
Action	The Shire to commission a suite of strategic investigations and consequential reports or strategies, with appropriate technical documentation to support the delivery of all future improvements.				
Opportunity	A Further strategic investigations and strategic documents are to be undertaken and prepared, including: Design Guidelines, Drainage Study, Road Design and Safety Audit, Road Designs Study (Charlotte St), Traffic Impact Study, Stormwater Management Strategy, Water Quality Strategy, Street Light Audit, CCTV Study, and Greening Plan. The strategic reports need to be prepared to inform detailed design at all scales.				
F.A.C.T.S.	F	A	C	T	S
	All	All	All	All	All

D2 Distributor roads through town (Infrastructure)					
Priority	Popular road connections to the Ferguson Valley and the nearby waste facility bring cars and trucks at relatively high speeds through what should feel like local neighbourhoods.				
Action	Slow the traffic down to mark the arrival into Dardanup town centre.				
Opportunity	B Introduce traffic calming measures along Ferguson Road, such as artful/decorative rumble strips and or large stone country pavers as carriageway, focused on the civic heart. Create a safe pedestrian crossing point further east along Ferguson Road, linking the civic area to the recreation areas just north of the town hall. C Integrate visual cues into the public realm that traffic has entered a small residential town e.g. street trees of dense bright foliage interspersed with car parking e.g. Tallow, Elm, Maple (or similar) densely planted so as to create bulky canopy impact.				
F.A.C.T.S.	F	A	C	T	S
	Shade	Art	Visuals/Materials	Fabrication	Traffic solutions



D3 Connectivity to town (Infrastructure)					
Priority	Connectivity to town and the local schools is fractured by the distributor roads. Pedestrians feel unsafe walking alongside fast-moving traffic on Garvey Road, Venn Road, Boyanup-Picton Road and Ferguson Road. The intersection of Venn Road and Boyanup-Picton Road is hazardous to motorists using both roads also, and widening Venn Road would result in significant vegetation clearing				
Action	Improve the pedestrian walkability along the main roads with supportive amenity. Improve motorist safety on Venn Road and Boyanup-Picton Road with minimal vegetation impact				
Opportunity	<div><div>D</div>Create shared pathways off the carriageways with sufficient distance and shade to encourage all types of use. Safely combine footpath, cycle path and bridleway along these lines/routes.</div> <div><div>E</div>Incorporate educative interpretation signs and interactive structures along the way to encourage children to enjoy walking the trails, e.g. eye level signs in farmyards, timber ‘stepping stones’.</div> <div><div>F</div>Create a pedestrian crossing across Boyanup-Picton Road so that community approaching from the west can safely access town across this road.</div> <div><div>G</div>Create a cul-de-sac near the eastern end of Venn Road to close the intersection with Boyanup-Picton Road. Support a new, future connection to Boyanup-Picton Road further to the north</div>				
F.A.C.T.S.	F	A	C	T	S
	Shade	Art	Visuals/Materials	Fabrication	Paths, Traffic solutions, Safety





Theme – Celebrating Local

With the expansion of Dardanup town into Dardanup West, the originally tight local community is starting to disconnect and lose its cohesive identity. When towns are small everyone is known and pitches in. With the arrival of newcomers without the supporting social infrastructure and adequate connectivity, keeping the communication and social channels open and effective becomes harder.

D4 Expanding community (Community)					
Priority	Dardanup West residents are young, work in Bunbury and use other town centres in addition to Dardanup townsite. They no longer have the social fabric of the ‘mail run’ associated with the old Post Office, nor the ease of access to the General Store, instead mostly collecting mail and groceries in larger regional centres.				
Action	Improve the connection between the ‘east’ and ‘west’ to bring the communities together.				
Opportunity	H Create more community-wide events like the Bull and Barrel Festival to bring communities together on committees and at the events.				
F.A.C.T.S.	F	A	C	T	S
	In/off town	Events/Movement	One village	Communication	Events



08



09



10



11



12



13



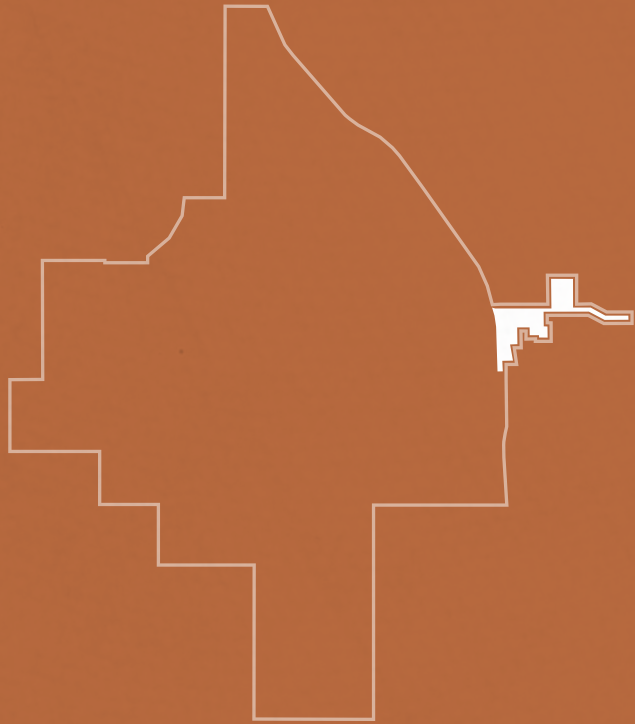
Theme - Gateway to the Ferguson Valley

Passing travellers in search of the famous Dardanup meat pie are at risk of missing this beautiful rest stop.

D5 Identity of Dardanup (Public Realm)					
Priority	Unless approaching from the north, there is a lack of ‘sense of arrival’ when entering Dardanup. It is easy to miss the turning into Charlotte Street from Boyanup-Picton Road, and the civic heart is missing an appropriately welcoming formal setting along Ferguson Road.				
Action	Put Dardanup on the tourist map with artistic entry statements. Create a sense of arrival with artfully curated entrance signs.				
Opportunity	1 Create visible entry statements at the gateways to Dardanup, designed with the local artist community, expanding the Ferguson Valley Art Trail. Use the statements to communicate the distinctly Dardanup character, with themes that speak of the town’s rich history and industry, e.g. horse breeding, cattle, dairy and timber. Incorporate character palette colours, these could be wood, deep ebony brown, white, flame cor-ten - all against the green backdrop.				
F.A.C.T.S.	F	A	C	T	S
	Art		Visuals/Materials		Fabrication



PRECINCT PLAN



PRECINCT PLAN

OPPORTUNITIES TABLE

Code	Opportunity	Table
A	Permeable link	DP1
B	Arbour walk Ferguson Rd	DP2
C	Arbour walk Doolan St	DP2
D	Community street Doolan St	DP2
E	Community street Little St	DP2
F	Pedestrian crossing point	DP2
G	Plants to residents scheme	DP2
H	Wayfinding	DP3
I	Public access way upgrade	DP3
J	Groves of trees	DP4

LEGEND

Refer to Opportunities Table

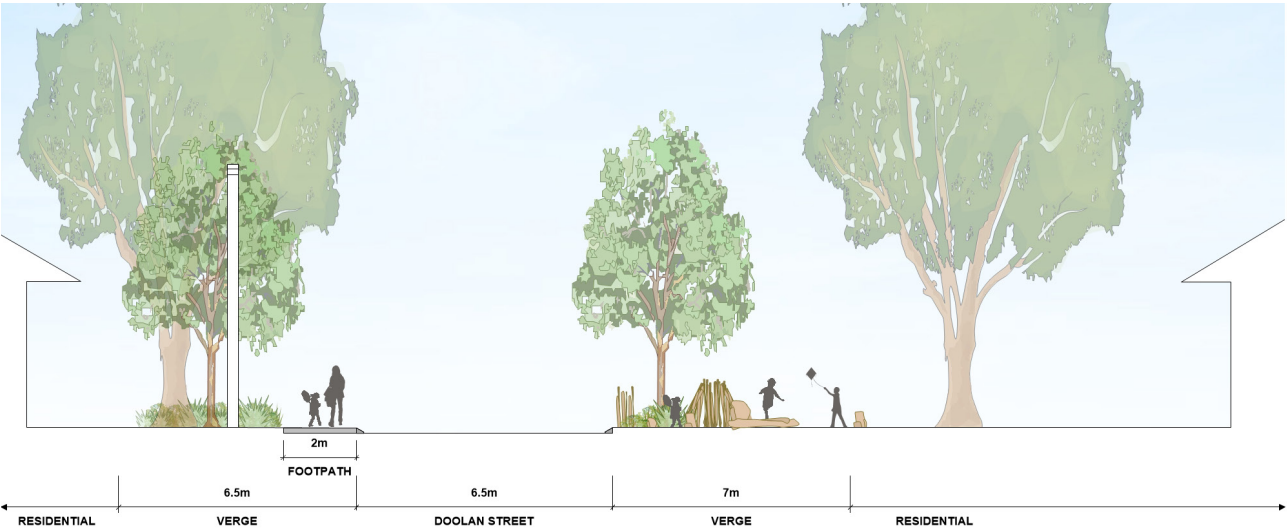
- Bus stop
- Gateway signage
- Public art (Public Art Strategy)
- Bridal trail
- Shared pathways network
- Precinct Plan boundary
- Sub-precinct Plan boundary
- Future residential expansion area

PLACES

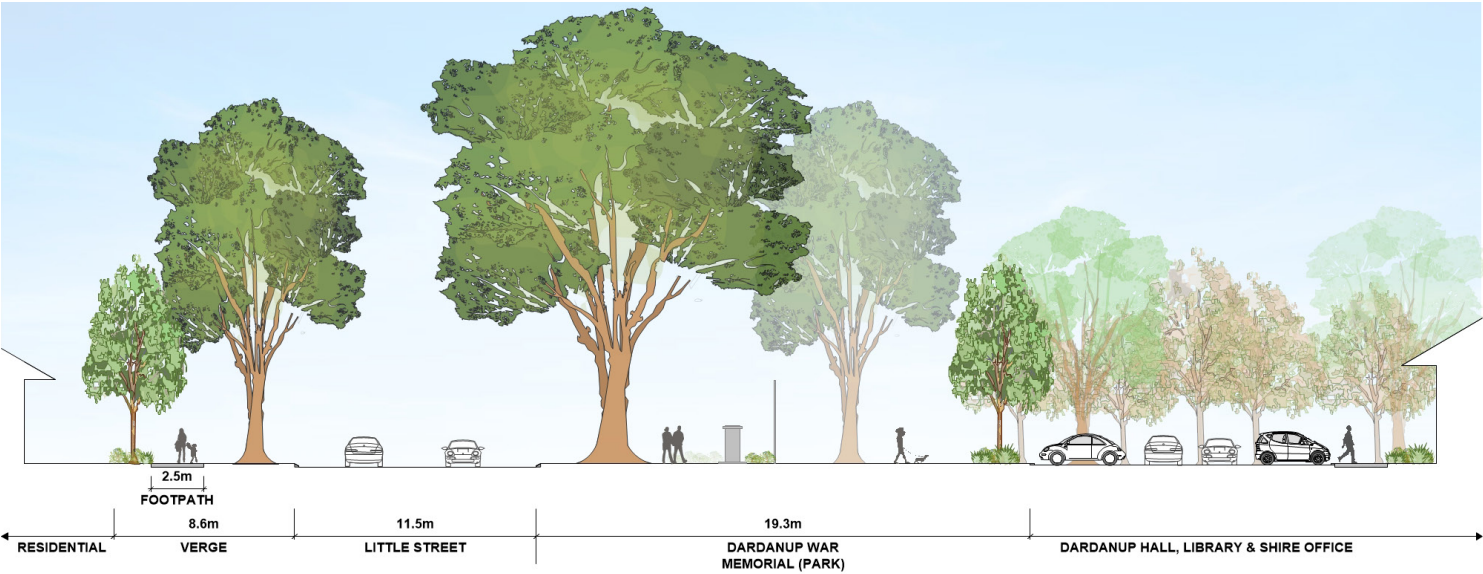
- | | | |
|--|--|---|
| 1 Dardanup Hall | 15 Our Lady of the Immaculate Conception | 20 Wells Recreation Reserve |
| 2 Dardanup Public Library and Shire Office | 16 Thomas Little Memorial Hall | 21 Wells Reserve Sports Club and toilets |
| 3 Dardanup War Memorial | 17 Hosea House of Prayer | 22 Dardanup Central Volunteer Bush Fire Brigade |
| 4 Dardanup Community Centre | 18 Our Lady of Lodes Primary School | 23 Eustace Fowler Park |
| 5 Ferguson Valley Visitor Centre | 19 Carramar Park | 24 Proposed new skatepark and pump track |
| 6 Dardanup Rural Supplies | | |
| 7 Dardanup Post Office | | |
| 8 Dardanup General Store | | |
| 9 Dardanup Tavern | | |
| 10 Dardanup Garage | | |
| 11 Dardanup Barkery | | |
| 12 Dardanup Primary School | | |
| 13 St. Mary's Anglican Church | | |
| 14 Tourist stop | | |



Cross sections



SECTION E - DOOLAN STREET LOOKING EAST



SECTION F - LITTLE STREET LOOKING NORTH

DARDANUP TOWNSITE PRECINCT

Context and Character

Dardanup townsite forms the social and commercial heart of the wider Dardanup locality.

Context

Dardanup is a charming rural town, positioned at the junction of two prime streets that both define and separate the community. Charlotte Street with its ribbon of local businesses forms the 'front door' to the townsite, whilst the civic and social activities are centred deeper into the town on Little Street and Ferguson Road.

Two primary schools on the town periphery serve this community with its many young families, whilst the centre of community gatherings, Wells Recreation Reserve, is positioned on the eastern entrance into town.

The townsite is defined by three Sub-precincts that serve distinct functions and support the town's 'one-village' community: commercial, civic and recreation. These are explored in more detail in the next sections.

Character

Built form

The central townsite buildings are authentic, honest, and unpolished detached, single storey homes. The historically diverse buildings span generations (mostly 1800-1900s) and are in various conditions, many original timber buildings lost through time and fire. The remaining Federation Free Style heritage buildings contribute to a grounded, practical materiality in brick, board, and stone (including handmade local clay), and corrugated iron roofs.

Rusty relics from Dardanup's agricultural and forestry past are dotted around the town, via buildings, collectibles, and water tanks.

Passive surveillance is good – properties have open porches and generous front yards with absent or open front fences, thus easily survey the streets, pathways, and public open space.

Public realm

The town layout is a rectilinear ladder suburb, laid out as a series of residential streets feeding off neighbourhood access roads. Linear patterning comes from rail, streets, pathways, drainage channels and trees. Lots are large and mostly front loaded, the majority with single gravel driveways.

Streets are simple, wide, and utilitarian. They are tree-lined, power-lined, have some public access ways (PAWs), however they harbour little traffic calming mechanisms. Verges are wide. Front fences are none or open (including pickets). Gardens are open and level with footpaths.

Residential roads are the interfaces, between urban land and adjoining farmland, and between primary schools and adjoining residences. The peripheral roads are higher speed major roads: Ferguson Road and Boyanup-Picton Road.

There is both active and passive public open space (POS) in the townsite that is both freeform and linear. There are few play and amenity elements including shelters and seating. Wayfinding is via road signs, rail and mosaic path inlays along Hayward Street.

In summary, mature trees and manicured front lawns create an attractive and welcoming neighbourhood, supporting a strong sense of community.

Environment

Much the same as the wider district however tree species change from endemics to exotics as you approach the centre of town with its older settlement, European sentiment.

Landscape assessment

- Town site regionally connected by Boyanup-Picton Road (north-south) and gateway to the Ferguson Valley via Ferguson Road (east).
- Visitors driving north-south or east-west are at risk of bypassing Dardanup as there are no significant markers to celebrate and inform visitors of approaching destination.
- Commercial strip runs north-south parallel to Boyanup-Picton Road, with the civic precinct, including the town hall, Shire building/library and cenotaph, addressing Ferguson Road which runs east-west. There is a disconnect between the two.
- Charlotte Street provides slower speed and well scaled main street to support commercial activity.
- Charlotte Street has parking amenity that also addresses the rail reserve allowing direct access to open space areas.

- The historic rail reserve has created a large open space that acts as a buffer between Boyanup-Picton Road and Charlotte Street and is an asset that could provide future activities for the community and visitors subject to ownership and future reinstatement of the rail service.
- Vehicles are the dominant form of transport and movement around the townsite.
- Residential developments extend to the west of Boyanup-Picton Road in Dardanup West. Current non-vehicular connections are weak and do not provide links for pedestrian, cycle and/or bridle pathways/tracks, to connect community to Dardanup townsite.
- Ferguson Road dissects Our Lady of Lourdes Primary School, Our Lady of Immaculate Conception Church, and the recreational area from the main Dardanup townsite and creates a safety concern for community when crossing Ferguson Road.
- Carramar Park has predominately fixed plastic play equipment and lacks a variety of play experiences, particularly non-structured play areas. There are no natural materials or representation of themes that respond to Dardanup's sense of place or identity. Age group is predominately junior focus 3-12yrs. Missing youth activities such as a skatepark, pump track and parkour elements (the activity or sport of moving rapidly through an area, typically in an urban environment, negotiating obstacles by running, jumping, and climbing).
- Wayfinding interventions through Dardanup is not evident to guide community to key destinations.
- No overall street tree strategy to support outdoor urban comfort, biodiversity, or to assist in structuring wayfinding through the Dardanup townsite through different tree species that represent key connections, crossing nodes and destinations.
- Limited First Nations representation.

Sense of place

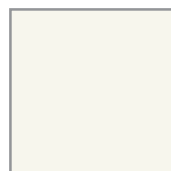
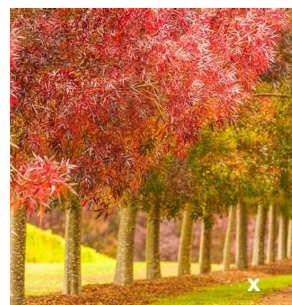
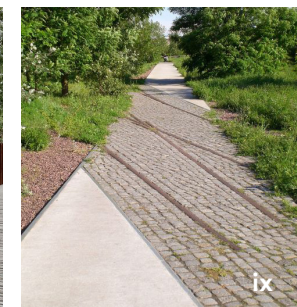
Dardanup is a quintessential small, healthy Australian farming town. It boasts a tough pioneer history respected for its fair dealing.

This honest and caring character remains today in the close-knit creative community, treasured heritage buildings and railway track. Places that started with a sense of purpose have identity and evident character that should be sustainable.

Places that are built with a sense of purpose have clear identity and evident character that supports an enduring sense of place.

Precinct place palette

The place palette should be considered in the general urban design of the place, e.g. landscaping, footpaths, amenities and public art, etc.

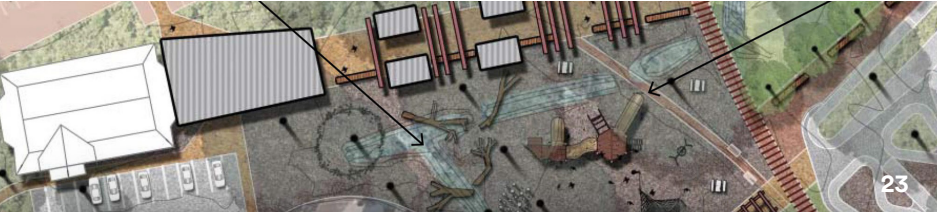


Dardanup Townsite Precinct Gaps and Opportunities

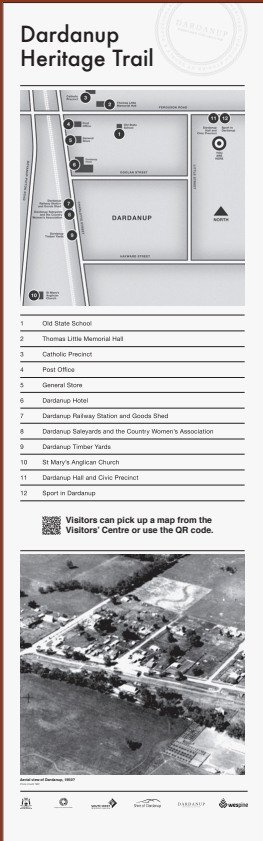
DP1	North-south connections in town (Built Environment)				
Priority	Connecting the three Sub-precincts is needed to support movement and walkability, increase activation of the streets and support the social connectedness associated with the village character of Dardanup.				
Action	Improve the north-south permeability through the town.				
Opportunity	A The current/underway opening up of the Civic Precinct to Carramar Park will start to assist to create a much-desired central connection through the townsite. However, more is needed, including a permeable link (visual and movement) right through from Ferguson Road to Hayward Street. This luckily lines up north-south, thus keeping this north-south 300m long linear corridor open/free of obstacles. It will be level, clearly marked, fun, themed, tree-lined, and safe to move through i.e. well lit etc. This requires moving the old toilets and fences etc. Also see D1 i.e. traffic calming on Ferguson Road just north of the town hall.				
F.A.C.T.S.	F	A	C	T	S
	Space/Play	Play/Move	One village	Recycling	Safety



DP2	East-west connections in town (Public Realm)				
Priority	Connectivity between the Sub-precincts and surrounding activity nodes needs improvement to increase movement. The key east-west pedestrian lines are: crossing Charlotte Street to the bus-stop and links to the neighbouring Dardanup West; along Doolan Street between the Charlotte Street and Carramar Park/Civic Precinct; Ferguson Road from Wells Recreation Reserve to Our Lady of Lourdes Primary School; and along Hayward Street to Dardanup Primary School. The Doolan Street connection between the local shops and the play area and community facilities in the Civic Heart lacks appeal to pedestrians in the hot summer months, or rainy winter days.				
Action	Improve the east-west permeability through the town: bring the commercial centre and the Civic Centre together using links and enticement of movement; increase walkability of Doolan Street.				
Opportunity	<div><div>B</div>Frame view corridors, and heritage features, e.g. the east-west spine journeys including Ferguson Road link. Create rail-timber arbour walks down these streets to lead foot traffic from Charlotte Street to the Civic Heart. Ferguson Road is Priority 1.</div> <div><div>C</div>Frame view corridors, and heritage features, e.g. the east-west spine journeys including Doolan Street link. Create rail-timber arbour walks down these streets to lead foot traffic from Charlotte Street to the Civic Heart. Doolan Street is Priority 2.</div> <div><div>D</div>Create a ‘community street’ along Doolan Street using railway sleepers, habitat logs, low (edible) shrubs and large endemic trees (especially planted on the south verge as this will mean they grow over the road towards the sun, and this also keeps limbs away from houses/roofs). Also entice foot traffic by artful line marking on the road, and introduce more wayfinding paving in-lays as a breadcrumb trail between Eustace Fowler and Carramar Parks.</div> <div><div>E</div>Create a ‘community street’ along Little Street using railway sleepers, habitat logs, low (edible) shrubs and large endemic trees. Also entice foot traffic by artful line marking on the road, and introduce more wayfinding paving in-lays as a breadcrumb trail between Eustace Fowler and Carramar Parks.</div> <div><div>F</div>Add a pedestrian crossing point at the junction of Doolan Street and Little Street.</div> <div><div>G</div>Give back to the environment by allowing planting spaces for diverse plants and greening impact via a ‘Plants to Residents’ scheme. Increase shade through additional tree canopy.</div>				
F.A.C.T.S.	F	A	C	T	S
	Community Streets/ Shelter	Planting	Visuals/Materials	Fabrication	Paths, Schemes



DP3	Wayfinding (Public Realm)				
Priority	The network of roads and public footpaths does not support intuitive wayfinding. The laneway footpath connecting Carramar Park and Hayward Street is narrow and fairly concealed from either end. On a positive note, wayfinding in town has begun thanks to the Dardanup Heritage Collective and their Dardanup Heritage Trail signage and map. The blade cor-ten signs will be features around town from the Post Office to the Bakery visibly linked to lead visitors from one to the next. The Ferguson Valley Public Art Trail will start in Dardanup townsite.				
Action	Use art and signage to further support wayfinding.				
Opportunity	<div><div>H</div><div>Additional wayfinding art could be dispersed around town to support pedestrian activation along the primary routes, just as the Dardanup Primary School's pavement mosaics activate the walk along Hayward Street. New shared pathways and existing Public access ways (PAWs) could be defined by such ground in-lays or signposts, in sympathy with the Dardanup Heritage Trail in its materials and form.</div></div> <div><div>I</div><div>Celebrate the PAWs into Carramar Park, eg from Hayward street, to clearly mark their location, e.g. lighting, colour, archway, farm gate, community artwork, shade structure overhead of PAWs. This is so that people can see and find their way through the public realm.</div></div>				
F.A.C.T.S.	F	A	C	T	S
	Shade	Movement	Vernacular	Materials	Paths

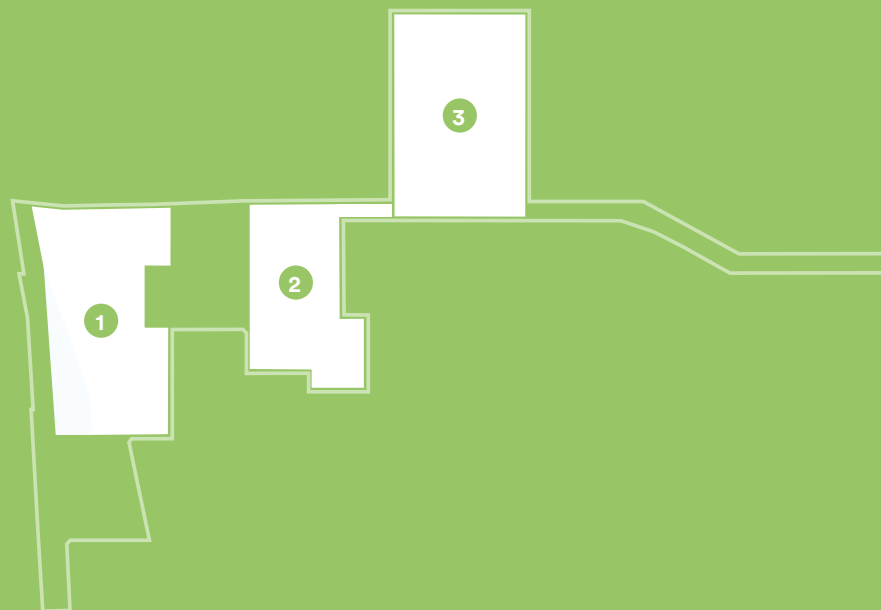


Dardanup Heritage Trail Interpretive Signage
Source: Publik

DP4	Diverse planting (Public Realm)				
Priority	Decimation of biodiverse native planting cleared for farming has resulted in a rise in groundwater levels with seasonal flooding of Carramar Park. Greening is lacking in town as are street trees.				
Action	Plant more native trees to replace previously removed trees.				
Opportunity	J There are many places for forest groves of water sucking trees that suit the drainage issues and local character i.e. 'bring the orchard farms into town'. Species include Flooded Gums, Freshwater Paperbark, Wandoo, Kingia, Marri. Locations including parks, oval surrounds, nature trails, streets. Note that this works in summer.				
F.A.C.T.S.	F	A	C	T	S
	Shade	Movement	Endemics	Ecology	



SUB-PRECINCT PLANS



DARDANUP TOWNSITE'S THREE SUB-PRECINCTS

1. Dardanup Commercial Sub-precinct

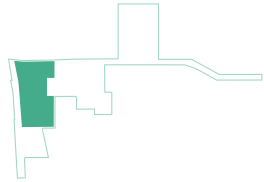
Commercial and retail activity is centred on Charlotte Street, creating an outward-facing commercial frontage to serve neighbouring and passing trade as well as the internal needs of Dardanup townsite.

2. Dardanup Civic Sub-precinct

The heart of the town evolved to meet the civic and social needs of the local community, now limited to a library, day care, playground and town hall, soon to be joined by the RAC nature trail park.

3. Dardanup Recreation Sub-precinct

The community come together at Wells Recreation Reserve for sports and festivals. The expansive area facilitates large informal and formal gatherings that connect the wider community.



SUB-PRECINCT PLAN 1: COMMERCIAL CENTRE

OPPORTUNITIES TABLE

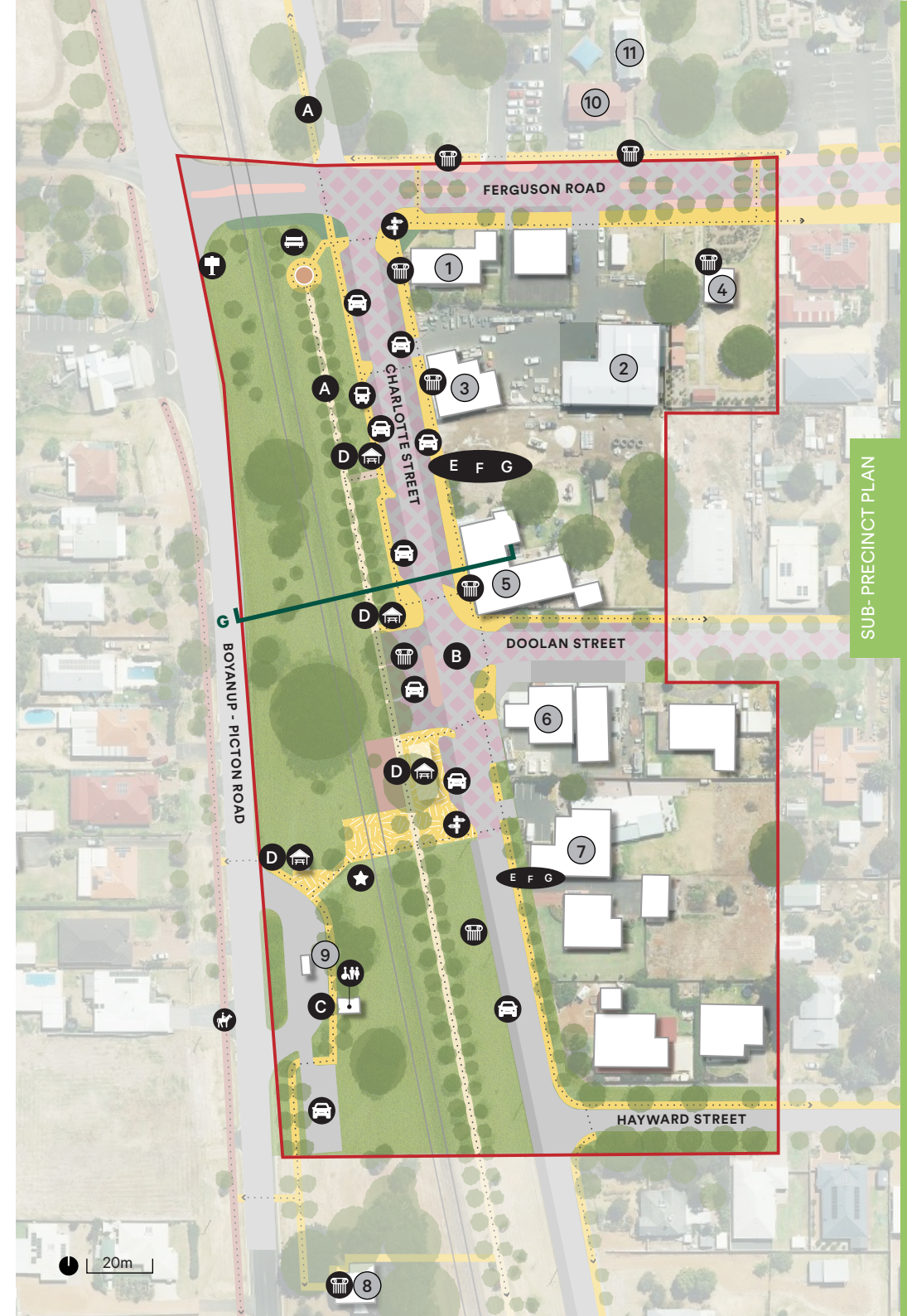
Code	Opportunity	Table
A	Shared pathways	DSP1.1
B	Traffic calming	DSP1.1
C	Rest stop conveniences	DSP1.2
D	Shelter and play	DSP1.2
E	Verandas	DSP1.3
F	Outdoor eating	DSP1.3
G	Front courtyards	DSP1.3

LEGEND

x	Refer to Opportunities Table
	Heritage signage
	Gateway signage
	Wayfinding signage
	Public art (Public Art Strategy)
	Seating
	Bus stop
	Parking
	Toilets
	Shelter & seating
	Bridal trail
.....	Shared path network
	Sub-precinct Plan boundary

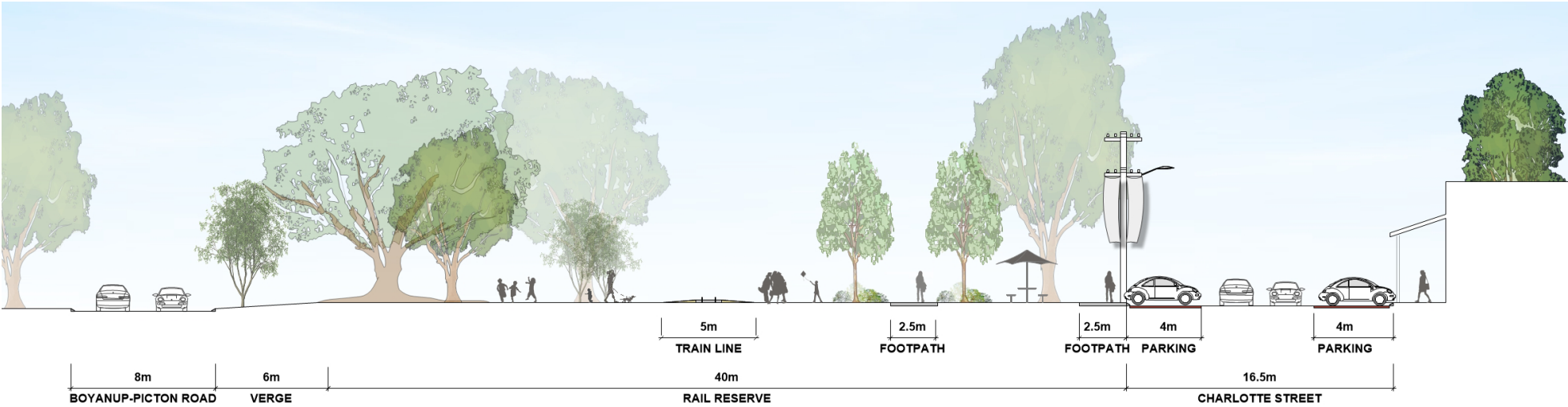
PLACES

1	Post Office
2	Dardanup Rural Supplies
3	General Store
4	Ferguson Valley Visitor Centre
5	Dardanup Tavern
6	Dardanup Garage
7	Dardanup Bakery
8	St Mary's Anglican Church
9	Tourist stop
10	Hosea House of Prayer
11	Thomas Little Memorial Hall



Cross sections

SUB- PRECINCT PLAN



SECTION G - CHARLOTTE STREET LOOKING NORTH

DARDANUP COMMERCIAL SUB-PRECINCT

Context and Character

Dardanup Commercial Sub-precinct is the retail and tourism face of town.

Context

For a town of Dardanup's size it is important for economic viability that the commercial/retail centre is consolidated in one location. In this case along Charlotte Street, positioned for ease of access to the neighbouring suburbs and rural homesteads as well as the residents within the townsite. The post office, general store, tavern, and bakery form the commercial frontage of the town, behind which nestles the social and civic heart of the community, east along Doolan Street.

Future commercial expansion potential extends to the south along Charlotte Street as far as the intersection with Clearys Road.

Although the old railway station no longer serves the town, Charlotte Street is still central to local transport, the bus-stop connecting children to their high schools and residents to regional towns for work and retail.

Eustace Fowler Park forms a ribbon along Charlotte Street following the old railway line. Improved amenity will include a public toilet and shaded picnic table. Parking bays entice passing travellers to take a rest stop, enjoy the local produce and admire the old railway line and heritage assets within Eustace Fowler public open space.

The local shops are connected to the play area and community facilities in the Civic Heart by Doolan Street. This residential street loses its walkability appeal with the abrupt end to the shady footpath after just 50 metres.

Character

Built form

'The Dardy' Tavern's pastel-grey rendered facade forms the centrepiece to the Charlotte Street frontage, the curved corrugated iron awning casting welcome shade over the footpath.

Public realm

Eustace Fowler Park is a largely unembellished open linear rail reserve that passively mirrors the scale and size of Charlotte Street shops on the other side of the street. There is the metal water wheel as an eye-catching marker to the north of this park.

Environment

Much the same as the Precinct level in its sparse species and structure. There are lines of gum trees running north-south.

Landscape assessment

- Charlotte Street as a secondary street off main commuter Boyanup-Picton Road, allows traffic to slow down into the town centre and orientate themselves.
- No clear marker to inform drivers of the positive amenities of Dardanup, i.e. bakery, tavern, general store, rest stop, open space provision.
- The rail reserve provides open space amenity and would further benefit from additional programs that respond to themes of the rail, Dardanup local agricultural and First Nation's history, to represent a sense of place. It is missing play opportunities that could also provide a link to Carramar Park.
- Parking is available to support the rest stop.
- Feature tree planting within rail reserve is evident – aligned with footpath and rail line.
- A sense of character is evident on Charlotte Street, need to keep building on to create a more cohesive identity.
- No clear links from commercial area to Dardanup's other key zones, i.e. civic area (including Carramar Park) and the recreation area.
- Doolan Street is potentially a key link between Dardanup's commercial and civic areas. Current material treatment is generic, concrete footpath and bitumen road, with large verges. The alignment of powerlines impacts existing street trees growth and the ability to install additional street trees on north side of road to provide green corridor between Carramar Park (civic area) and Charlotte Street (commercial area).

Sense of place

The commercial, retail, tourism nature of this place gives its character which is active during the day and around the tavern more so in the evenings.

Sub-precinct 1 place palette

The place palette should be considered in the general urban design of the place, e.g. landscaping, footpaths, amenities and public art, etc.

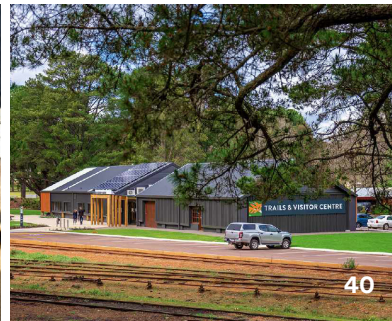
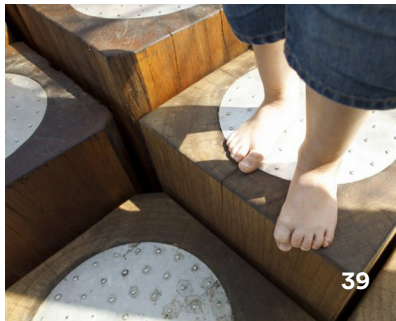
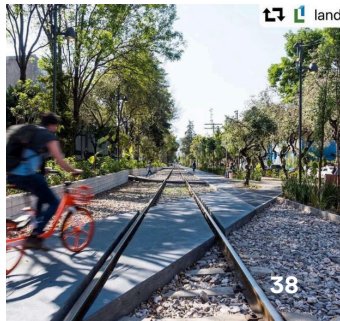


Dardanup Commercial Sub-precinct Gaps and Opportunities

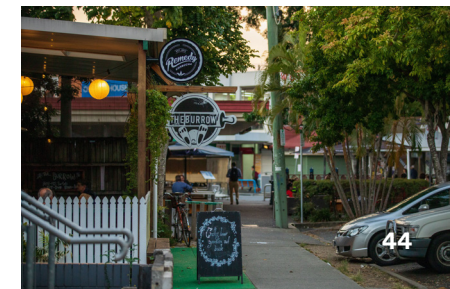
DSP1.1 Charlotte Street (Infrastructure)					
Priority	Turning off the Boyanup-Picton Road on to Charlotte Street the pace of life slows down. Cars pull up to take a rest stop and enjoy the local Dardanup produce. This strip of Charlotte Street should feel pedestrian friendly, encouraging visitors to enjoy a leisurely lunch in the linear park. The wider community walking or cycling up Charlotte Street to access the shops or school should also feel safely protected from the traffic.				
Action	Increase safety and connectivity along Charlotte Street.				
Opportunity	A Create a clear shared pathway within the shade of the maturing boulevard of trees within Eustace Fowler Park. B Slow traffic down along Charlotte Street with rumble strips or painted road surface that marks the arrival in town.				
F.A.C.T.S.	F	A	C	T	S
	Paths	Art/Movement	Art	Rumble strips	Traffic

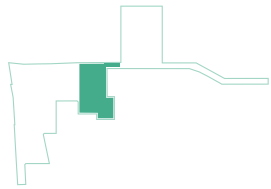


DSP1.2 Eustace Fowler Park (Public Realm)					
Priority	Eustace Fowler Park, with its prime location, has the potential to be a more useable and activated park for visitors and locals alike.				
Action	Create a linear park that supports both local community and visitor needs. Note although the Shire does have a few things on the Reserve, anything new is subject to PTA/Arc Infrastructure review and approval.				
Opportunity	<p>C Create an appropriately themed recreation destination to attract tourists as a welcoming advertisement for the town with all the conveniences of a drivers' rest stop e.g. miniature train line winding through the trees, playful timber footbridges, barrels and bulls. Activate the rest area with big pots e.g. wine barrels and festoon lights. Consider MARKR signage.</p> <p>D Provide shelter and seating that appeal to all ages and abilities.</p>				
F.A.C.T.S.	F	A	C	T	S
	Play	Social	Themes	MARKR	



DSP1.3 Vibrant Charlotte St					
Priority	The eastern side Charlotte Street lacks a sense of vibrancy, and doesn't have a distinctive character nor sufficient shade to entice visitors to linger and enjoy this main commercial strip.				
Action	Activate the street by increasing amenity and reinforcing built form character (attractive, shaded front verandas), and enabling social interaction/connection.				
Opportunity	<p>E Encourage wide front verandas to buildings along Charlotte Street that reflect Dardanup's character and provide shade, like at 'The Dardy' tavern.</p> <p>F Promote and encourage outdoor eating at the front of lots/buildings to add vibrancy and improve social connectivity.</p> <p>G Encourage front courtyards to contribute to vibrancy, sense of place, and passive surveillance. Discourage parking between the front boundary and buildings where other options exist.</p>				
F.A.C.T.S.	F	A	C	T	S
	Shelter / shade	Social	Materials / vibrancy		





SUB-PRECINCT PLAN 2: CIVIC HEART

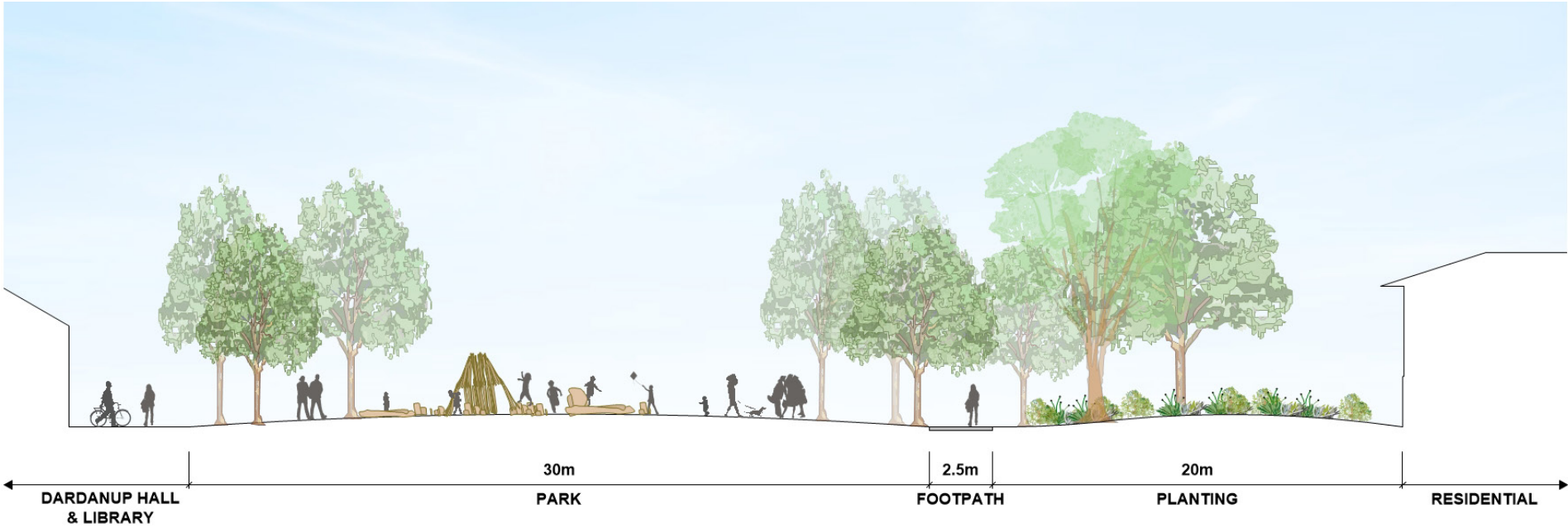
OPPORTUNITIES TABLE		
Code	Opportunity	Table
A	Dardanup Hall improvements	DSP2.1
B	Upgraded toilets	DSP2.1
C	Alfresco space	DSP2.1
D	Trees and planted beds eastern side	DSP2.1
E	Trees and planted beds western side	DSP2.1
F	Design guidelines	DSP2.2
G	Drainage solutions	DSP2.3
H	Build up footpath	DSP2.3
I	Integrated playgrounds	DSP2.4
J	Skatepark & pump track	DSP2.5
K	Ground mural	DSP2.5
L	Informal performance space	DSP2.5
M	Small oval	DSP2.6
N	Planting along fence line	DSP2.6

LEGEND	
x	Refer to Opportunities Table
	Heritage signage
	Wayfinding signage
	Public art (Public Art Strategy)
	Seating
	Parking
	Toilets
.....	Shared path network
	Sub-precinct Plan boundary
PLACES	
1	Dardanup Hall
2	Shire Office and Public Library
3	Community Centre
4	Dardanup War Memorial
5	Carramar Park
6	New Public Open Space
7	New Nature Play and Trail
8	Investigate acquisition long term



Cross sections

SUB- PRECINCT PLAN



SECTION H - CIVIC COURTYARD

DARDANUP CIVIC SUB-PRECINCT

Context and Character

Dardanup Civic Sub-precinct is the social heart of town.

Context

The civic and social heart of town (including the hall, library, and Carramar Park) is a welcoming, activated, and inclusive social amenity and gathering space for all ages and abilities. The enduring 1950s buildings on the corner of Little Street and Ferguson Road are complemented by the listed ghostly Lemon-Scented Gums standing sentry by the Dardanup War Memorial.

The buildings sit back from Ferguson Road in a sea of asphalt car park, with a formal memorial garden fronting Little Street. With the proposed new landscaped park opening the connection south to Carramar Park, the Civic area will be redefined as a formal 'forecourt' to Ferguson Road and linking to the 'courtyard' behind Dardanup Hall, then Carramar Park which is like the fun 'backyard' for town.

Dardanup Hall and Shire building have long formed the heart of the community: the Hall is currently used for ballet, festival events and meetings. The Shire building now has a library and the outside car park is occasionally used as an overnight RV rest stop (this is set to be removed and relocated to the sporting precinct). But the Ferguson Valley Hall east of Dardanup town is where the locals are drawn to for their sundowners, bands, and casserole nights.

Character

Built form

The 1950s red brick buildings sit back from Ferguson Road in the asphalt car park, with a formal memorial garden.

Public realm

Currently, there is minimal public amenity around the civic buildings apart from some picnic shelters. However, Carramar Park is the heart of this area with its existing off-the-shelf older-style play equipment painted with primary tones and sheltered amongst mature trees. The proposed new landscaped park is set to open up the connection north-south.

Environment

The Lemon-Scented Gums and other large shade trees are sentinel landmarks.

Sense of place

This place comes alive at active times, namely, after school when the kids use the park, and when the ballet dance classes are on.

Landscape assessment

Dardanup Hall and Dardanup War Memorial

- Site drainage and stormwater management of the whole precinct is crucial in planning how site can be used year-round.
- Limited canopy cover around Dardanup Hall, does not support outdoor urban comfort.
- Large unstructured asphalt extent around the town hall that does not differentiate through layout or materiality, parking and pedestrian areas.
- No feature landscape treatment to Ferguson Road. Does not address Ferguson Road as Dardanup's civic area and destination node for community gathering and ceremonies.
- Recent upgrade to Dardanup War Memorial. Large remnant gum trees on adjacent Little Street provide important scale and character to this civic area.
- The town hall has historic importance to the community as the primary civic building. No feature landscape evident that represents the civic and ceremonial quality of this area.
- The upcoming landscape project will provide a new activity and destination for the community.
- Currently no link or connection to Carramar Park which cuts the civic area in half.

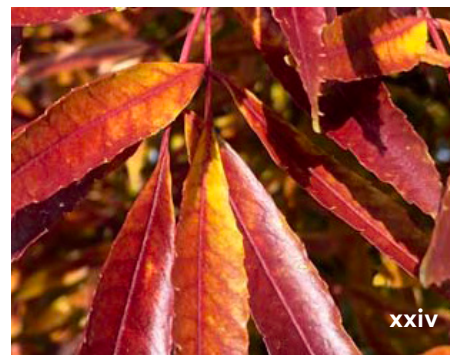
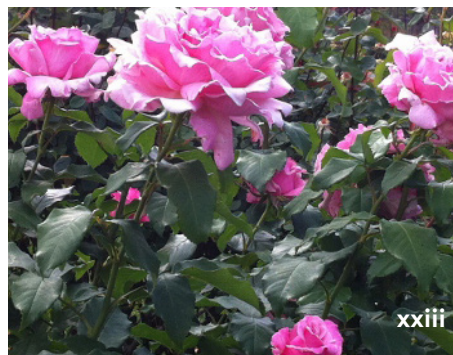
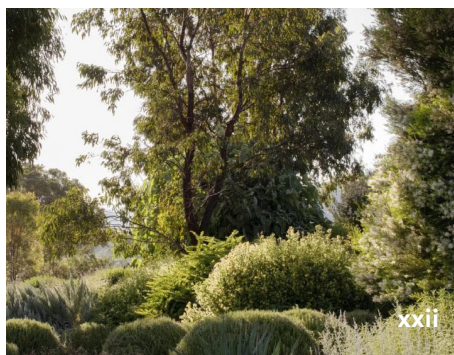
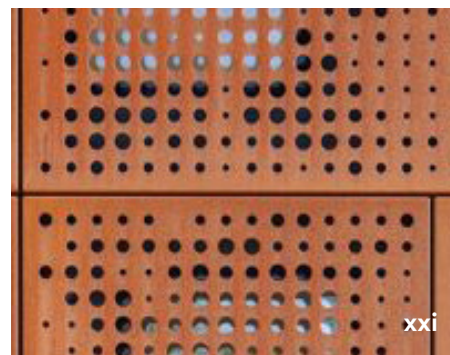
Ferguson Road

- Ferguson Road is a commuter road and carries agricultural vehicles, including trucks.
- Ferguson Road does not currently showcase itself as a primary gateway entry into Dardanup from the east or a gateway to the Ferguson Valley from the west.

- There are a number of existing Claret Ash Trees to the south side of Ferguson Road, adjacent the town hall. However, there are minimal avenue feature street trees to define arrival into Dardanup and acknowledge key town functions and destinations such as the commercial, civic and recreation areas – between Recreation Road and the intersection with Boyanup-Picton Road. Currently Ferguson Road does not stitch together, or provide a green link or managed pedestrian movement between Our Lady of Lourdes Primary School or the recreation area to the main townsite of Dardanup.
- It's important to interface with the broader agricultural landscape as a primary landscape character that defines Dardanup.
- The streetscape treatment does not have cues to slow traffic down on approach and transition to a local road on the periphery of Dardanup. Pedestrian movement is not prioritised.

Sub-precinct 2 Civic place palette

The place palette should be considered in the general urban design of the place, e.g. landscaping, footpaths, amenities and public art, etc.



Carramar Park

- An environmental asset with scattering of large remnant gum trees. They provide shade, ecological benefits and contribute to local endemic landscape character of the area.
- The area is subject to flooding which can impact how the park is used at different times of the year.
- Residential lots back onto the park from three sides. The material and condition of the fences vary, which presents an eclectic mix and treatment around the periphery of the park.
- Connections west lead to Doolan and Little Street; east opens to Shire Place and public access way south connects to Hayward Street. The perimeter backyard fences create an impermeable edge to the southern section of Carramar park.
- Disconnected from the town hall by an existing fence that runs along the northern boundary of the park.
- Predominantly fixed playground equipment of a generic style that does not represent local themes relating to heritage, culture, or the local environment. The equipment is predominately plastic with metal fixtures, no use of natural or re-purposed materials. The equipment is in a sound condition, and provides play experience for 3-12yrs.
- Existing shade sails provide shade over playground area.
- Only provision for youth (12-18yrs) is a basket ring and concrete hardstand.
- Large shelter, painted in primary colours with picnic table seating, the aesthetic is dated.
- There is a BBQ facility located near the shelter.
- A small concrete circuit track for children on scooters and small bikes.
- The current link between Carramar Park and Charlotte Street is weak. There is no wayfinding or pedestrian friendly interventions to link the two key precincts.
- Small car park, bitumen hardstand – no canopy cover or shade.

Sub-precinct 2 Carramar Park place palette

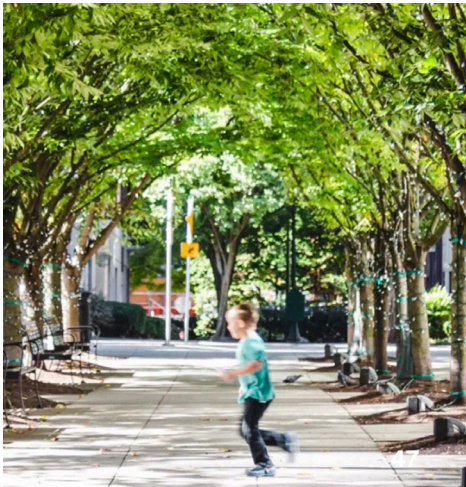
The place palette should be considered in the general urban design of the place, e.g. landscaping, footpaths, amenities and public art, etc.



Dardanup Civic Sub-precinct Gaps and Opportunities



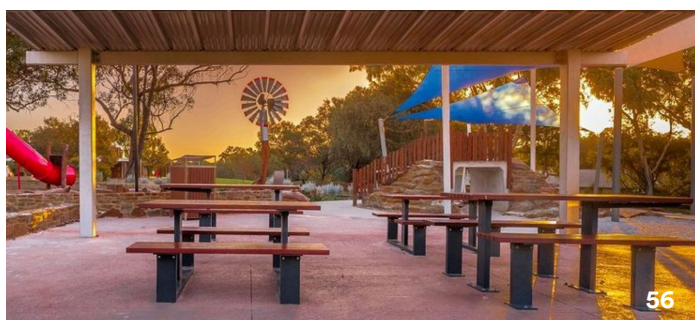
DSP2.1	Dardanup Hall (Built Environment)				
Priority	Dardanup Hall doesn't have the attractive alfresco area to spill out into; the public toilets to the rear constrain the connection to the new play trail to Carramar Park, and would benefit from a material upgrade.				
Action	Upgrade the forecourt to Dardanup Hall to create an attractive, shaded 'front veranda' with designated hard-standing and softening planted beds and trees, to support a variety of activation.				
Opportunity	<div><div>A</div>Invest in the physical transformation of Dardanup Hall and the Shire Office to support a wider range of activation for all ages and abilities.</div> <div><div>B</div>Rebuild the public toilets to include a Changing Places Toilet to support people of all levels of mobility.</div> <div><div>C</div>Alfresco space for outdoor music/cinema, food trucks and classic car meets etc. Support the activation of the new play area by bringing in a coffee van and/or light food at regular times of the day to meet community needs. Alternatively, consider the viability of a permanent café in the front of Dardanup Hall, advertised on Ferguson Road.</div> <div><div>D</div>Extend the natural features of the nature play trail into the car park to break up the expanse of asphalt e.g. trees and planted beds. The eastern side of hall is priority 1.</div> <div><div>E</div>Extend the natural features of the nature play trail into the car park to break up the expanse of asphalt e.g. trees and planted beds. The western side of hall and renovation is priority 2.</div>				
F.A.C.T.S.	F	A	C	T	S
	Hall/Toilet etc	Art/Social	Art/Materials	Art	Events



DSP2.2 Sympathetic choices (Public Realm)					
Priority	The community value preserving memories and making sound new ones. Some precious places of historical importance have been lost and respecting what remains is vital to sustaining the character of Dardanup.				
Action	Ensure new development and evolution are in sympathy with the existing built form.				
Opportunity	F Establish formal design guidelines for the townsite (Built Form as well as Public Realm/Landscaping Guidelines), including public realm improvements and new building materials in sympathy with the Dardanup character palette.				
F.A.C.T.S.	F	A	C	T	S
		Compile	Materials	Software	Governance
DSP2.3 Carramar Park landscaping (Public Realm)					
Priority	Carramar Park is a much loved and well-used community play area. With the opening to the town hall site to the north, Carramar Park will be truly connected to all areas of Dardanup. Grassed and shaded by mature trees, the park is used all-year round, but due to drainage issues it floods in winter.				
Action	Integrate drainage improvements in new landscaping.				
Opportunity	G Integrate drainage solutions (likely traditional subsoil and pipe based) in the park to address the winter drainage issues. H Build up paths connecting to slightly raised play equipment to create level access to play areas even during raised winter water levels.				
F.A.C.T.S.	F	A	C	T	S
	Play	Play	Materials	Drainage/ Smart benches/bins	



DSP2.4 Carramar Park playground (Public Realm)					
Priority	The existing play equipment is non-descript, standard coloured that could be anywhere in Western Australia. The existing play equipment is reaching the end of its material life (refer to Playground Audit for details).				
Action	Create a quality public realm that locals can relate to.				
Opportunity	I Create a themed regional playground e.g. agriculture references, railways and export. Think an “organised and maintained back yard for everyone” with shelter , social outdoor furniture , slide mounds, lighting , and shady trees . Fully fence a playground area appropriate to various age ranges, including for children with special needs. Potentially remove the Community Centre fence and integrate landscaping into Carramar Park. Note it is important that play is for ALL ages, inclusive and fosters health.				
F.A.C.T.S.	F	A	C	T	S
	Shelter	Play/Social	Materials/Forms	Smart benches/bins/ PV cells	Events

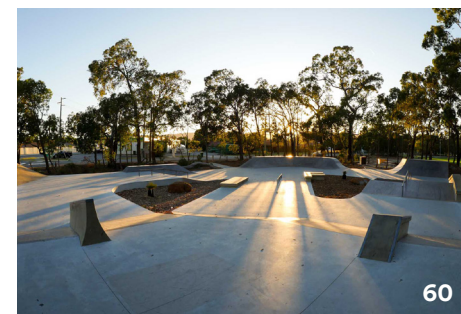


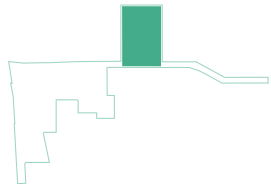
DSP2.5 Skatepark and teen play (Infrastructure)					
Priority	The small skatepark was built in Wells Recreation Reserve as a temporary facility to meet the demands of the local Dardanup youth. The community would like better facilities for teenagers to safely meet up with their friends in the heart of Dardanup townsite.				
Action A	Provide a larger, more challenging skatepark for the Dardanup youth community in Carramar Park.				
Opportunity	<p>J Relocate the skatepark site to the civic area where it could be larger and more accessible to local residents.</p> <p>K Bring the community together with local artists to create a bespoke ground mural (or fence) that is distinctly Dardanup, and clearly marks the heart of the town to passing traffic.</p>				
Action B	Provide seating, shelter and informal performance spaces for less active youth to safely meet up with their friends.				
Opportunity	L Create an informal performance space and seating area with shelter from rain and sun, close to the skatepark and within sight of the adjacent street. Incorporate lighting for early evening use.				
F.A.C.T.S.	F	A	C	T	S
		Skate/Perform	Materials/Forms	High-tech skatepark Integrated audio system, lighting and e-charging points.	

General note: refer to Appendix E for the audit of play equipment.

DSP2.6 South-east corner Carramar Park (Public Realm)					
Priority	The south-east corner of Carramar Park is currently underutilised with little passive surveillance. The perimeter fences are to private back gardens with no security.				
Action	Support the legitimate activation of this space for informal ball games, picnics and play. Protect the back garden fences with a perimeter barrier of defensive planting.				
Opportunity	<p>M Revise south-east section of Carramar Park to create a small oval, providing an informal grassed area for ball games.</p> <p>N Include planting along fence line to protect adjacent fences from sound and damage.</p>				
F.A.C.T.S.	F	A	C	T	S
	Oval	Informal games	Plant materials		

General note: Carramar Park subject to further design studies.





SUB-PRECINCT PLAN 3: RECREATION HUB

OPPORTUNITIES TABLE		
Code	Opportunity	Table
A	Pedestrian crossing	DSP3.1
B	New footpath	DSP3.1
C	Sheltered spectator seating	DSP3.2
D	Lighting for sport	DSP3.2
E	New fenced playground	DSP3.2
F	Complete pathway	DSP3.2
G	Tree planting	DSP3.2
H	Refurbish or extend clubrooms	DSP3.2
I	Parking design study (not on plan)	DSP3.3
J	Upgrade car park	DSP3.3
K	Upgrade car park	DSP3.3

LEGEND	
	Refer to Opportunities Tables
	Seating
	Parking
	Caravan stopover
	Toilet upgrade
	Gateway signage
	Shared pathways network
	Drainage swale
	Sub-precinct Plan boundary
PLACES	
	Wells Recreation Reserve
	Wells Recreation Reserve clubroom, pavilion and toilets
	Dardanup Central Volunteer Bush Fire Brigade
	Upgrade tennis courts
	Upgrade netball / basketball courts
	Practice nets
	New change rooms



SUB-PRECINCT PLAN

DARDANUP RECREATION SUB-PRECINCT

Context and Character

Dardanup Recreation Sub-precinct is the active part of town.

Context

The Wells Recreation Reserve oval and clubrooms is a flexible, open community space that functions for both sporting and festival events. As the community expands, the pressure on the facilities will continue to grow. The Shire has already recognised that the changing rooms and club facilities need upgrading to create a more inclusive sporting venue for both male and female teams.

Sports facilities include three basketball courts, two tennis courts, three cricket nets and one oval for cricket and football. A small skatepark sits in the south-west corner with an adjacent picnic shelter.

Also, within the precinct is the new Central Dardanup Bush Fire Station. The well-equipped facility has been designed for use as an incident command centre as needed.

Access to the precinct by car is from Recreation Road. For those travelling on foot the connection from Dardanup townsite requires crossing the busy Ferguson Road via a traffic island at the western edge of the Reserve.

Character

Built form

Utilitarian, brick, corrugated iron.

Public realm

Mostly level turf, trees, and straight cut drainage channels. There is the existing skate park, but this is known to be set for relocation away from the south-west corner of Wells Recreation Reserve.

Environment

Mostly turf, trees around edges thus minimal ecological/biodiverse assets.

Landscape assessment

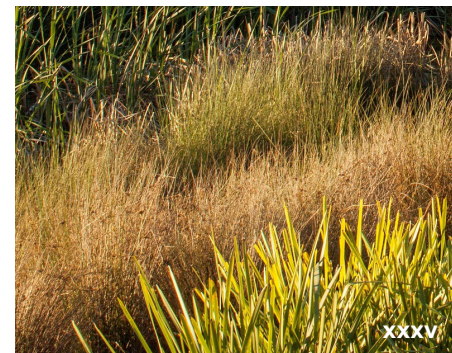
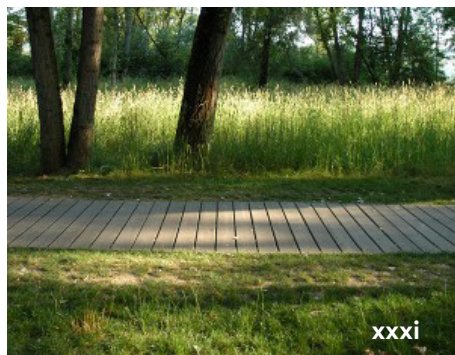
- The large recreational fields are disconnected from main townsite as located on northern side of Ferguson Road.
- There are weak pedestrian and cycle connections between Dardanup townsite and recreation area.
- There is the provision of cricket nets, tennis courts and club, and basketball courts.
- There is no clear definition of recreational precinct on approach along Ferguson Road, through street tree planting, accent planting or markers in the landscape.
- There is the provision of a small temporary skatepark at southwestern corner of playing fields that is well used and identifies a gap in provision of more permanent interventions for youth focused activities.
- There is limited tree planting within the precinct. There are remnant trees along Recreation Road, and to northern boundary of this area only.

Sense of place

This place comes alive when it's activated by weekly sports events, or the Bull and Barrel Festival (once a year). Otherwise, the character is vast, open, and void, waiting to be needed.

Sub-precinct 3 place palette

The place palette should be considered in the general urban design of the place, e.g. landscaping, footpaths, amenities and public art, etc.



Dardanup Recreation Sub-precinct Gaps and Opportunities

DSP3.1 Wells Recreation Reserve connections (Infrastructure)					
Priority	When Wells Recreation Reserve hosts sports matches and festivals the pedestrian foot traffic from Dardanup townsite to the south can be high at the same time as road traffic along Ferguson Road is busy.				
Action A	Support the safe crossing of Ferguson Road to Wells Recreation Reserve.				
Opportunity	A Relocate and formalise the pedestrian crossing to connect it to the civic area (also see D2 i.e. slow down traffic on a section of Ferguson Road approaching the crossing).				
Action B	Create a safe and shaded place along Ferguson Road (connecting to above-mentioned) safe crossing to Wells Recreation Reserve.				
Opportunity	B Add a footpath to Wells Recreation Reserve to the north side of Ferguson Road under the shade of the street trees; create a safe shared pathway for pedestrians, cyclists and horse-riders away from the carriageway.				
F.A.C.T.S.	F	A	C	T	S
		Move	Materials/Forms	Paint	Traffic



DSP3.2 Shelter in Wells Recreation Reserve (Public Realm)					
Priority	Mature trees offer some shelter, but the precinct would benefit from additional shelter to meet the needs of the spectators at sports matches and festival-goers.				
Action	Create more sheltered seating around the edge of the Reserve.				
Opportunity	<div><div>C</div><div>If the skatepark is relocated, its site could be repurposed as an arrival gateway from Dardanup townsite, with shelter, signage, seating, and lighting.</div></div> <div><div>D</div><div>Install lighting for event games.</div></div> <div><div>E</div><div>Add a small fenced playground adjacent new clubrooms.</div></div> <div><div>F</div><div>Complete pathway/cycleway all around perimeter of oval.</div></div> <div><div>G</div><div>Tree planting on western side of oval.</div></div> <div><div>H</div><div>Refurbish or extend clubrooms. The new toilets and changerooms building has been recently built.</div></div>				
F.A.C.T.S.	F	A	C	T	S
	Shelter/Sports	Move/Play	Materials/Forms	Lighting/Smart benches/bins/PV cells	Paths



DSP3.3	Wells Recreation Reserve car parking improvements (Infrastructure)				
Priority	There is pressure on car parking around and within Wells Recreation Reserve when sports and community events are on.				
Action	Improve car parking opportunities for players and spectators attending events at Wells Recreation Reserve.				
Opportunity	<div><div>I</div><div>Investigate the opportunity to provide further parking bays around the perimeter of the Reserve, accessed from Recreation Road and/or Ferguson Road. Further parking design study is required with due consideration of traffic safety and speeds, perimeter drainage channel, and future development proposals for the adjacent lots on Recreation Road.</div></div> <div><div>J</div><div>Upgrade the car park between clubroom and Recreation Road.</div></div> <div><div>K</div><div>Upgrade the car park west of the Volunteer Bush Fire Brigade building.</div></div> <div>General note: parking subject to further design studies.</div>				
F.A.C.T.S.	F	A	C	T	S
	Car parking	Sports and events	Materials		

ACTIVATION

ACTIVATION

SCHEDULE OF ACTIONS, PROJECTS AND PROGRAMMING BASED ON THE PLACE AND COMMUNITY PLAN 2020-2030

Local community groups and organisations in Dardanup

- Bull and Barrel Committee
- Dardanup Advisory Group
- Dardanup Arts Spectacular
- Dardanup Basketball Association
- Dardanup Catholic Parish
- Dardanup Central Bush Fire Brigade
- Dardanup Community Playgroup
- Dardanup Cricket Club
- Dardanup Day Care
- Dardanup Heritage Collective
- Dardanup Junior Netball Club Inc
- Dardanup Lions
- Dardanup Primary School
- Dardanup Residents Association
- Dardanup Senior Citizens
- Dardanup Social Dance Club
- Dardanup Sporting and Community Group Inc
- Dardanup Tennis Club
- Eaton Dardanup Football Club
- Ferguson Valley Marketing
- Gnaala Karla Booja Native Title Claim Group
- Morrissey Homestead Inc
- Our Lady of Lourdes Dardanup (and P&F)
- South West Cycle Club
- South West Mountain Bike Club
- Southern Youth Justice Services
- WA Country Health Service South West

The Shire of Dardanup's strategic documents seek to ensure a community that is safe, vibrant, inclusive, and welcoming. The focus areas to achieve this objective have been identified as:

An Empowered and Actively Engaged Community: learned, engaged, participatory, team building.

A Sustainable and Resilient Community: healthy, active, safe, leadership and independence fostered, eco-aware, and future friendly.

An Accessible and Inclusive Community: inclusive, livable, access to health, community and social services, total participation, and catering to ALL age groups.

A Vibrant and Connected Community: active involvement in community life and strong sense of community pride, fun, social, belonging, activation.

A Distinctly Dardanup Community: creative, foster cultural and artistic creativity and diversity, place making that celebrates uniqueness of character.

The calendar overleaf suggests updates to the Dardanup event calendar inspired by the place plan opportunities and the Shire's strategic community objectives.



Activation initiatives

The below proposes new vibrant initiatives to meet the placemaking direction. The grey shaded line items at the bottom of the table indicate existing events in Shire of Dardanup's calendar.

J	F	M	A	M	J	J	A	S	O	N	D	
												“Relic Artefacts Art Exhibition”. This encouragement is oriented to seniors and across generations. This could be held in winter/makuru as an indoor activation.
												“Model Plane Float”: where light crafts float over the plains and maybe even drift down from the hills. This has an environmental/social focus. The time for this would be Spring/Kambarang.
												“The Dirt”: share sessions learning from community agriculture. This could be held one in each season (4 and 6) to make the most of real learning. This should incorporate Noongar connection to country learnings of looking after the land and showcase Noongar stories and dance groups. A location for this is a visitor rest stop building should one be approved in future.
												“Till the Cows Come Home”: commercial/social event and program initiatives such as food trucks (beef burgers), street food markets and community stalls focused on agricultural produce and supporting the local economy and tourism sector. This could be held throughout the year.
												Competition: events such as art and design, Tidy Towns, biggest produce or wine competition. These could be held throughout the whole year.
												“Wander and Wonder” youth program: inclusivity, encouragement, development, services at the skate park, pump track, Carramar Park playground and getting involved in competitions. This could be held in Aug-Sept/Djilba as there are few events in the calendar then.
												“Leave the Porch Lights On” placemaking week: a multi-generational inclusive program where neighbours walk to town, bands play and share food plates. This could be held in spring/Kambarang when the trees are flowering, and the blossoms' aroma permeates the warm evenings.
												“Anzac Morning Breakfast”: to remember and celebrate the fallen at the Dardanup War Memorial. This is held in Apr/Djeran.
												“Bull and Barrel Festival”: a day of experiencing country hospitality that showcases the talents of our local schoolchildren, musicians, dancers and artists. Provides a fundraising opportunity for our community groups and showcases local agriculture, industry, businesses and tourism, held in Wells Recreation Reserve. This takes place in October/Spring/ Djilba.
												National Weeks: including Harmony Week (Mar), Seniors Week (Nov), Youth Week (Apr) Children's Week (Oct) and Recycling Week (Nov) could include stories and learnings of place including waste management and Noongar learnings.
												“Art Spectacular”: showcases emerging artists in the region via a static exhibit in Dardanup Hall, an art trail, wine, food, scenery. This in June/Winter/Makuru.
												“Lost and Found Ferguson Valley”: over 4 bustling days, wine, music etc throughout Bunbury, Dardanup, Donnybrook and the Valley occurs in Sept/Spring/Djilba.
												“Summer Sounds in The Park”: in Carramar Park in Jan/Summer/Birak.
												“Movies by Moonlight”: movies at Wells Recreation Reserve in Jan-Feb/Summer/Bunuru.

IMPLEMENTATION FRAMEWORK

SCHEDULE OF INITIATIVES, ACTIONS, PARTNERSHIP OPPORTUNITIES, INFRASTRUCTURE, ASSOCIATED COSTS, TIMING AND BENEFICIARIES

The Shire's Strategic Community Plan 2020 - 2030 (SCP) clauses went on to inform the Shire's Place and Community Plan 2020 - 2030 (PCP) clauses, and then this Place Plan (PP) with its 3 Dardanup Place Themes. All have informed the of numbered initiatives throughout this Place Plan and the following Implementation Plan.

The priorities and actions are to be assessed having regard to the Shire's budget, Council Plan and Long Term Financial Plan, as amended from time to time.

Strategy clause table	Vision 2050	SCP and PCP
Connected: fostering positive community connection (physically and socially) through a multitude of vibrant community spaces and programs	p28/4.0	
Provide facilities which create opportunities for people to move/ be active	p17/1.1	
Promote aging in place	p18/1.3	
Grow tourism markets	p21/2.1	
Feed local food economy	p21/2.2	
Establish green corridors	p25/3.1	
World class waste management solutions	p25/3.2	
Design sustainable buildings	p26/3.3	
Improve transport networks	p29/4.2	
Build on vibrancy with community programs	p30/4.3	
Creativity including makerspace and robotics	p34/5.4	
Smart City technologies , data, and tools, innovation in food productions, energy, and advanced manufacturing	p32/5.5	
Protect and preserve open spaces, natural vegetation and bushland		2.1.1
Preserve and protect the ecological value of watercourses		2.1.2
Sustainable transport infrastructure		2.2.2
Encourage the preservation of significant heritage properties and precincts		2.4
Develop/review/implement place plans		2.5
Foster creativity in the community through public spaces and urban environment		3.1.1
Promote creative participation by supporting the development of opportunities for local artists and creatives minds		3.1.2
Recognise Aboriginal culture/heritage in the region		3.1.3

Strategy clause table	Vision 2050	SCP and PCP
Deliver a high level of community programmes and services that encourage social connectedness , facilities and accessible inclusive environment for a diverse community (including youth, seniors, cross-generational, cross-cultural, eg shared use pathways and public transport) Deliver place making activities and events in each Place		3.2.1
Safe and secure community		3.4
Create connectivity that support business success by efficient movement and exchange of people, business , goods, services and ideas		4.1.1
Develop local tourism sector become a choice destination for tourists, visitors and our own residents (including attracting events and employment including place making and vibrant events)		4.2.1
Foster and promote the Ferguson Valley as a tourist destination		4.2.3
Provide efficient road network for efficient movement of people and goods by road		5.1.1
Advocate for transport choices to increase the availability of safe, affordable and viable transport options		5.1.2
Provide safe road transport network where crashes resulting in death or serious injury are minimised		5.1.3
Build resilient transport network infrastructure from future threats and constraints		5.1.4
Provide a series of interconnected walkways, pathways and cycle ways that meets community needs and expectations		5.1.5
Encourage urban developments that foster connectivity between residents		5.1.6
Encourage physical activity , providing services and recreational facilities that encourage community towards active healthy lifestyle		5.2.1
Deliver a high level library facility and services to enhance sharing of knowledge		5.2.3

Key:

#DCS = indicates Developer Contribution Scheme may be involved (consult Planning Strategy needs nexus)

* = indicates material (suggestion only to help with cost exercise)

() = indicates location

PRIORITY	ACTION	CODE	OPPORTUNITY (aspirational)	TASKS	PARTNERSHIPS	TANGIBLE ITEM	UNIT	COST L/M/H	BENEFICIARIES	F	A	C	T	S	STRATEGY KEY WORD	STRATEGY CLAUSE
ALL ASSETS AREAS																
D1 - Further strategic investigations and strategic documents																
<i>The Shire needs a suite of guidance documents/strategies to support the coordinated delivery of the Place Plan priorities</i>	The Shire to commission a suite of strategic investigations and consequential reports or strategies, with appropriate technical documentation to support the delivery of all future improvements	A	Further strategic investigations and <u>strategic documents</u> are to be undertaken and prepared, including: Design Guidelines, Drainage Study, Road Design and Safety Audit, Road Designs Study (Charlotte St), Traffic Impact Study, Stormwater Management Strategy, Water Quality Strategy, Street Light Audit, CCTV Study, and Greening Plan. The strategic reports need to be prepared to inform detailed design at all scales.	Plan; Implement	Government; Consultants	Documents and Human Resources	Job Lot	Excluded	Community; Visitors; Commerce; Government; Wildlife	✓	✓	✓	✓	✓	All	All

Costing Notes:

Construction Budget includes the outline scope of works plus Main Contractors Preliminaries and Margin

Project Budget includes Contingencies, Professional Fees, Client Cost and Project Contingency

All costs are current day - August 2022

Scope, Quantities and Rates are all Provisional and subject to definition in the next design stage

Excludes GST

Excludes any services infrastructure diversions

Assumes all existing services infrastructure is suitable for new works

Excludes contamination or abnormal ground conditions expect for area of Carramar Park where drainage is an issue

Costs assume Competitive Tender process with local builders using basic selection of materials

Excludes FFE/ICT and AV

Refer to DCWC issue 11 August 2022 for extent of scope allowed where applicable

Cost column referencing 'L/M/H' indicates: Low <\$250K, Medium <\$1M, or High \$1M+

PRIORITY	ACTION	CODE	OPPORTUNITY (aspirational)	TASKS	PARTNERSHIPS	INFRASTRUCTURE	UNIT	COST L/M/H	BENEFICIARIES	F	A	C	T	S	STRATEGY KEY WORD	STRATEGY CLAUSE
INFRASTRUCTURE																
D2 - Distributor roads through town																
Popular road connections to the Ferguson Valley and the nearby waste facility bring cars and trucks at relatively high speeds through what should feel like local neighbourhoods	Slow the traffic down to mark the arrival into Dardanup town centre	B	Introduce <u>traffic calming</u> measures along Ferguson Road, such as artful decorative rumble strips and or large stone country pavers as carriageway, focused on the civic heart. Also to further slow traffic, further east along Ferguson Road there will be a pedestrian crossing point linking the civic area to the recreation area i.e. just north of the town hall	Design; Construct	Engineers; Landscape Architects; MRWA; PTA	Large Stone Country Pavers *proprietary	Item	Medium (<\$1M)	Community; Visitors; Commerce; Government	✓	✓	✓	✓	✓	Tourism x 3 Heritage Creativity x 3 Place Plans Aboriginal Place making Programmes Vibrancy Safe Transport x 7	V2.1 SCP4.2.1 SCP4.2.3 SCP2.4 V5.4 SCP3.1.1 SCP3.1.2 SCP3.2.1 V4.3 SCP3.4 SCP2.2.2 V4.2 SCP5.1.1 SCP5.1.2 SCP5.1.3 SCP5.1.4 SCP5.1.5 SCP2.2.2
		C	Integrate visual cues into public realm that traffic has entered a small residential town, e.g. <u>street trees</u> of dense bright foliage interspersed with car parking e.g. Tallow, Elm, Maple (or similar) densely planted so as to bulky canopy impact	Design; Construct	Landscape Architects; Education/Training	Street Trees *eg Maples, Chinese Tallow etc	Item	Medium (<\$1M)	Community; Visitors, Commerce; Government; Wildlife	✓	✓	✓	✓	✓	Greening/Vegetation Safe Walkways Place making Vibrancy Transport	V3.1 SCP2.1.1 SCP3.4 SCP2.2.2 V4.2 SCP5.1.1 SCP5.1.2 SCP5.1.3 SCP5.1.4 SCP5.1.5 V4.3 SCP3.2.1 SCP2.2.2 V4.2

PRIORITY	ACTION	CODE	OPPORTUNITY (aspirational)	TASKS	PARTNERSHIPS	INFRASTRUCTURE	UNIT	COST L/M/H	BENEFICIARIES	F	A	C	T	S	STRATEGY KEY WORD	STRATEGY CLAUSE
D3 - Connectivity to town																
<i>Connectivity to town and the local schools is fractured by the distributor roads. Pedestrians feel unsafe walking alongside fast-moving traffic on Garvey Road, Venn Road, Boyanup-Picton Road and Ferguson Road.</i>	Improve the pedestrian walkability along the main roads with supportive amenity.	D	Create <u>shared pathways</u> off the carriageways with sufficient distance and shade to encourage types of use. Safely combine footpath, cycle path and bridleways along these lines/routes	Design; Construct	Engineers; Landscape Architects; MRWA; PTA	Shared Paths *gravel, proprietary	Item	High (>\$1M)	Community; Visitors; Commerce; Government	✓	✓	✓	✓	✓	Safe Walkways Physical/Movement Social/Residents	SCP3.4 V4.2 SCP5.1.5 V1.1 V4.0 SCP3.2.1 SCP5.1.6 SCP5.2.1
		E	Incorporate <u>educative interpretation signs</u> and <u>interactive structures</u> along the way to encourage children to enjoy walking the trails, e.g. eye level signs in farmyards, timber 'stepping stones'	Design; Construct	Landscape Architects; Artists/Wayfinding Communications; Education/Training	Interpretation/Interactive Signs/ Structures *timber, steel, powdercoat	Item	Medium (<\$1M)	Community, Visitors, Commerce	✓	✓	✓	✓	✓	Place making Vibrancy Creativity x 3 Social/Residents Aboriginal Movement/Physical	SCP3.2.1 V4.3 V5.4 SCP3.1.1 SCP3.1.2 SCP5.1.6 V4.0 V1.1 SCP5.2.1
	Improve motorist safety on Venn Road and Boyanup-Picton Road with minimal vegetation impact	F	Create a <u>pedestrian crossing</u> across Boyanup-Picton Road so that community approaching town from the west can safely access town across this road	Design; Construct	Engineers; Landscape Architects; Artists/Wayfinding Communications; MRWA; PTA	Pedestrian Crossing (Boyanup-Picton Rd) *road paving surface, thermoplastics, line marking (bespoke and or proprietary)	Item	Medium (<\$1M)	Community, Visitors, Commerce	✓	✓	✓	✓	✓	Safe Transport x 7 Creativity x 3 Place making Aboriginal Vibrancy Walkways Exchange Tourism x 3 Physical/Movement	SCP3.4 SCP2.2.2 V4.2 SCP5.1.1 SCP5.1.2 SCP5.1.3 SCP5.1.4 SCP5.1.5 V5.4 SCP3.1.1 SCP3.1.2 SCP3.2.1 SCP3.1.3 V4.3 SCP5.1.5 SCP4.1.1 V2.1 SCP4.2.1 SCP4.2.3 V1.1 SCP5.2.1
		G	Create a cul-de-sac near the eastern end of Venn Road to close the intersection with Boyanup-Picton Road. Support a new, future connection to Boyanup-Picton Road further to the north.	Design; Construct	Engineers, Landscape Architects; MRWA	Traffic signs (Venn Road, Boyanup-Picton Road); roadworks for cul-de-sac; barrier fence/rocks	Item	Medium (<\$1M)	Community; residents; Government	✓	✓	✓	✓	✓	Safe Physical/Movement Transport Exchange	V4.0 V4.2 SCP2.1.1 SCP2.2.2 SCP3.4 SCP5.1.1 SCP5.1.3 SCP5.1.4
<i>The intersection of Venn Road and Boyanup-Picton Road is hazardous to motorists using both roads also, and widening Venn Road would result in significant vegetation clearing</i>																

PRIORITY	ACTION	CODE	OPPORTUNITY (aspirational)	TASKS	PARTNERSHIPS	INFRASTRUCTURE	UNIT	COST L/M/H	BENEFICIARIES	F	A	C	T	S	STRATEGY KEY WORD	STRATEGY CLAUSE
DSP1.1 - Charlotte Street										F	A	C	T	S		
Turning off the Boyanup-Picton Road onto Charlotte Street the pace of life slows down. Cars pull up to take a rest-stop and enjoy the local Dardanup produce. This strip of Charlotte Street should feel pedestrian friendly, encouraging visitors to enjoy a leisurely lunch in the linear park. The wider community walking or cycling up Charlotte Street to access the shops or school should also feel safely protected from the traffic	Increase safety and connectivity along Charlotte Street	A	Create a clear <u>shared pathway</u> within the shade of the maturing boulevard of trees within Eustace Fowler Park	Design; Construct	Engineers; Landscape Architects; MRWA; PTA	Shared Path *proprietary	Item	Medium (<\$1M)	Community; Visitors; Commerce; Government	✓	✓	✓	✓	✓	Walkway Social/Residents Movement/Physical	SCP5.1.5 V4.0 SCP5.1.6 V1.1 SCP5.2.1
		B	<u>Slow traffic</u> down along Charlotte Street with <u>rumble strips or painted road</u> surface that marks the arrival in town	Design; Construct	Local Artists; Engineers; Landscape Architects; MRWA; PTA	Rumble Strips / Road Art *bespoke art as above	Item	Low (<\$250K)	Community; Visitors; Commerce; Government	✓	✓	✓	✓	✓	Safe Transport x 7 Creativity x 3 Place making Aboriginal Vibrancy Walkways Exchange Tourism x 3 Physical/Movement	SCP3.4 SCP2.2.2 V4.2 SCP5.1.1 SCP5.1.2 SCP5.1.3 SCP5.1.4 SCP5.1.5 V5.4 SCP3.1.1 SCP3.1.2 SCP3.2.1 SCP3.1.3 V2.1 SCP4.2.1 SCP4.2.3 V1.1 SCP5.2.1
											F	A	C	T	S	
	The small skatepark was built in Wells Recreation Reserve as a temporary facility to meet the demands of the local Dardanup youth. The community would like better facilities for teenagers to safely meet up with their friends in the heart of Dardanup townsite	J	Relocate the <u>skatepark</u> site to the civic area where it could be larger and more accessible to the local residents	Design; Construct	Engineers; Skate Design Specialists; Local Suppliers; Education/Training	New Skatepark *concrete, steel, paint	Item	High (>\$1M)	Community; Visitors; Commerce		✓	✓	✓		Physical/Movement Social/Residents Vibrancy Creativity x 3	V1.1 SCP5.2.1 V4.0 SCP5.1.6 V4.3 V5.4
		K	Bring the community together with local artists to create a <u>bespoke ground mural</u> (or fence) that is distinctly Dardanup, and clearly marks the heart of the town to passing traffic	Design; Construct	Elders; Local Artists; Galleries; Education; Training	Mural (Dardanup) *bespoke art	Item	Low (<\$250K)	Community; Visitors; Commerce; Government	✓	✓	✓	✓	✓	Tourism x 3 Creativity x 3 Vibrancy Aboriginal Heritage Place making Social/Residential Exchange	V2.1 SCP4.2.1 SCP4.2.3 V5.4 SCP3.1.1 SCP3.1.2 V4.3 SCP3.1.3 SCP2.4 SCP3.2.1 V4.0 SCP5.1.6 SCP4.1.1
		L	Create an <u>informal performance space</u> and seating area with shelter from rain and sun, close to the skatepark and within sight of the adjacent street. Incorporate lighting for safe early evening use	Design; Construct	Artists; Elders; Engineers; Architects; Landscape Architects; Local Suppliers	Performance space *concrete, steel, timber	Item	Medium (<\$1M)	Community; Visitors; Commerce		✓	✓	✓		Physical/Movement Social/Residents Vibrancy Creativity x 3	V1.1 SCP5.2.1 V4.0 SCP5.1.6 V4.3 V5.4

PRIORITY	ACTION	CODE	OPPORTUNITY (aspirational)	TASKS	PARTNERSHIPS	INFRASTRUCTURE	UNIT	COST L/M/H	BENEFICIARIES	F	A	C	T	S	STRATEGY KEY WORD	STRATEGY CLAUSE
DSP3.1A&B - Wells Recreation Reserve connections:																
When Wells Reserve hosts sports matches and festivals the pedestrian foot traffic from Dardanup townsite to the south can be high at the same time as road traffic along Ferguson Road is busy	Support the safe crossing of Ferguson	A	Relocate and formalise the <u>pedestrian crossing</u> to connect it to the civic area	Design; Construct	Engineers; Landscape	Pedestrian Crossing *road paving surface, thermoplastics, line marking (bespoke and or proprietary)	Item	Medium (<\$1M)	Community; Visitors; Commerce; Government		✓	✓	✓	✓	Safe	SCP3.4
	Road to Wells Recreation Reserve;		(also see D2 i.e. slow down traffic on a section of Ferguson Road approaching the crossing)		Architects; Local Suppliers; MRWA; PTA										Transport x 7	SCP2.2.2
	Create a safe and shaded place along Ferguson Road (connecting to above-mentioned) safe crossing to Wells Recreation Reserve														Creativity x 3	V4.2
															Place making	SCP5.1.1
															Vibrancy	SCP5.1.2
															Walkways	SCP5.1.3
															Exchange	SCP5.1.4
															Tourism x 3	SCP5.1.5
															Physical/Movement	V5.4
															Social/Residents	SCP3.1.1
																SCP3.1.2
																SCP3.2.1
																V4.3
																SCP5.1.5
																SCP4.1.1
																V2.1
																SCP4.2.1
																SCP4.2.3
																V1.1
																SCP5.2.1
															V4.0	
															SCP5.1.6	
		B	Add a <u>footpath</u> to Wells Recreation Reserve to the north side of Ferguson Road under the shade of the street trees; create a safe shared pathway for pedestrians, cyclists and horse-riders away from the carriageway	Design; Construct	Engineers; Landscape Architects; Local Suppliers; MRWA; PTA	Shared Path (North side of Ferguson Road) *concrete	Item	Medium (<\$1M)	Community; Visitors; Commerce; Government	✓	✓	✓	✓	Safe/Transport x 7	SCP3.4	
														Walkways	SCP2.2.2	
														Physical/Movement	V4.2	
														Social/Residents	SCP5.1.1	
															SCP5.1.2	
															SCP5.1.3	
															SCP5.1.4	
															SCP5.1.5	
															V1.1	
															SCP5.2.1	
															V4.0	
															SCP5.1.6	

PRIORITY	ACTION	CODE	OPPORTUNITY (aspirational)	TASKS	PARTNERSHIPS	INFRASTRUCTURE	UNIT	COST L/M/H	BENEFICIARIES	F	A	C	T	S	STRATEGY KEY WORD	STRATEGY CLAUSE
DSP3.3 - Wells Recreation Reserve car parking improvement:										F	A	C	T	S		
There is pressure on car parking around and within Wells Recreation Reserve when sports and community events are on	Improve car parking opportunities for players and spectators attending events at Wells Recreation Reserve	I	Investigate the opportunity to provide further parking bays around the perimeter of the Reserve, accessed from Recreation Road and/or Ferguson Road. Further parking design study is required with due consideration of traffic safety and speeds, perimeter drainage channel, and future development proposals for the adjacent lots on Recreation Road	Plan	Engineers; Landscape Architects; Local Suppliers; MRWA; PTA	Parking Study/Plan	Item	Low (<\$250K)	Community; Visitors; Commerce; Government	✓	✓	✓			Safe	SCP3.4
															Transport x 7	SCP2.2.2
															Creativity x 3	V4.2
															Place making	SCP5.1.1
															Aboriginal	SCP5.1.2
															Vibrancy	SCP5.1.3
															Walkways	SCP5.1.4
															Exchange	SCP5.1.5
															Tourism x 3	V5.4
															Physical/Movement	SCP3.1.1
																SCP3.1.2
																SCP3.2.1
																SCP3.1.3
																V2.1
																SCP4.2.1
																SCP4.2.3
																V1.1
																SCP5.2.1
		J	Upgrade the car park between clubroom and Recreation Road	Design; Construct	Engineers; Landscape Architects; Local Suppliers; MRWA; PTA	Upgrade car park	Item	Medium (<\$1M)	Community; Visitors; Commerce; Government							
		K	Upgrade the car park west of the Volunteer Bush Fire Brigade building	Design; Construct	Engineers; Landscape Architects; Local Suppliers; MRWA; PTA	Upgrade car park	Item	Medium (<\$1M)	Community; Visitors; Commerce; Government							

[illegible]

PRIORITY	ACTION	CODE	OPPORTUNITY (aspirational)	TASKS	PARTNERSHIPS	INFRASTRUCTURE	UNIT	COST L/M/H	BENEFICIARIES	F	A	C	T	S	STRATEGY KEY WORD	STRATEGY CLAUSE
PUBLIC REALM																
D5 - Identity of Dardanup										F	A	C	T	S		
<i>Unless approaching from the north, there is a lack of 'sense of arrival' when entering Dardanup. It is easy to miss the turning into Charlotte Street from Boyanup-Picton Road, and the Civic Heart is missing an appropriately welcoming formal setting along Ferguson Road</i>	Put Dardanup on the tourist map with artistic entry statements. Create a sense of arrival with artfully curated entrance signs	I	Create visible <u>entry statements at the gateways</u> to Dardanup, designed with the local artist community, expanding the Ferguson Valley Art Trail. Use the statements to communicate the distinctly Dardanup character, with themes that speak of the town's rich history and industry, e.g.: horse breeding, cattle, dairy and timber. Incorporate character palette colours, these could be wood, ebony, white, flame cor-ten - all against the green backdrop	Design; Construct	Elders; Local Artists; Galleries; Planners; Landscape Architects; Education/Training	Entry Gateway Marker(s) Primary, Secondary *bespoke art eg timber and steel	Item	High (>\$1M)	Community; Visitors; Commerce; Government	✓	✓	✓			Tourism x 3 Heritage Creativity x 3 Aboriginal Place making Programmes Vibrancy	V2.1 SCP4.2.1 SCP4.2.3 SCP2.4 V5.4 SCP3.1.1 SCP3.1.2 SCP3.1.3 SCP3.2.1 V4.3
DP2 - East-west connections in town										F	A	C	T	S		
<i>Connectivity between the Sub-precincts and surrounding activity nodes needs improvement to increase movement. The key east-west pedestrian lines are: crossing Charlotte Street to the bus-stop and links to the neighbouring Dardanup West; along Doolan Street between the Charlotte Street and Carramar Park/Civic Precinct; Ferguson Road from Wells Recreation Reserve to Our Lady of Lourdes Primary School; and along Hayward Street to Dardanup Primary School. The Doolan Street connection between the local shops and the play area and community facilities in the Civic Heart lacks appeal to pedestrians in the hot summer months, or rainy winter days</i>	Improve the east-west permeability through the town; bring the commercial centre and the civic centre together using links and enticement of movement; increase walkability of Doolan Street	B	Frame view corridors, and heritage features, e.g. the east-west spine journeys including <u>Ferguson Road</u> link. Create rail-timber <u>arbour walks</u> down these streets to lead foot traffic from Charlotte Street to the Civic Heart. Ferguson Road is Priority 1	Design; Construct	Landscape Architects; Sponsors; Local Suppliers; Local Builders	Timber Arbour Walks (Ferguson Rd) *timber etc	Item	High (>\$1M)	Community; Visitors;	✓	✓	✓	✓		Tourism x 3 Heritage Creativity x 3 Aboriginal Place making/ Programmes Vibrancy	V2.1 SCP4.2.1 SCP4.2.3 SCP2.4 V5.4 SCP3.1.1 SCP3.1.2 SCP3.1.3 SCP3.2.1 V4.3
		C	Frame view corridors, and heritage features, e.g. the east-west spine journeys including <u>Doolan Street</u> link. Create rail-timber <u>arbour walks</u> down these streets to lead foot traffic from Charlotte Street to the Civic Heart. Doolan Street is Priority 2	Design; Construct	Landscape Architects; Sponsors; Local Suppliers; Local Builders	Timber Arbour Walks (Doolan St) *timber etc	Item	Medium (<\$1M)	Community; Visitors;	✓	✓	✓	✓		Tourism x 3 Heritage Creativity x 3 Aboriginal Place making/ Programmes Vibrancy	V2.1 SCP4.2.1 SCP4.2.3 SCP2.4 V5.4 SCP3.1.1 SCP3.1.2 SCP3.1.3 SCP3.2.1 V4.3
		D	Create a 'community street' along <u>Doolan Street</u> using railway sleepers, habitat logs, low (edible) shrubs and large endemic trees (especially planted on the south verge as this will mean they grow over the road towards the sun, and this also keeps limbs away from houses/roofs). Also entice foot traffic by artful line marking on the road, and introduce more wayfinding paving in-lays as a breadcrumb trail between Eustace Fowler and Carramar Parks	Design; Construct	Residents; Sponsors; Local Suppliers; Local Builders; MRWA; PTA	Community Street; (Doolan Street) *timber, soils, plants, trees Wayfinding Paving In-lays *bespoke art	Item	Medium (<\$1M)	Community; Visitors; Government; Wildlife	✓	✓	✓	✓	✓	Greening/Vegetation Walkways Movement/Physical Tourism x 3 Heritage Creativity x 3 Aboriginal Place making Programmes Walkways Social/Residents Vibrancy	V3.1 SCP2.1.2 SCP5.1.5 V1.1 SCP5.2.1 V2.1 SCP4.2.1 SCP4.2.3 SCP2.4 V5.4 SCP3.1.1 SCP3.1.2 SCP3.1.3 SCP3.2.1 SCP5.1.5 V4.0 SCP5.2.1 V4.3

PRIORITY	ACTION	CODE OPPORTUNITY (aspirational)	TASKS	PARTNERSHIPS	INFRASTRUCTURE	UNIT	COST L/M/H	BENEFICIARIES	F	A	C	T	S	STRATEGY KEY WORD	STRATEGY CLAUSE
		E Create a 'community street' along Little Street using railway sleepers, habitat logs, low (edible) shrubs and large endemic trees. Also entice foot traffic by artful line marking on the road, and introduce more wayfinding paving in-lays as a breadcrumb trail between Eustace Fowler and Carramar Parks	Design; Construct	Residents; Sponsors; Local Suppliers; Local Builders; MRWA; PTA	Community Street; (Little Street) *timber, soils, plants, trees Wayfinding Paving In-lays *bespoke art	Item	Low (<\$250K)	Community; Visitors; Government; Wildlife	✓	✓	✓	✓	✓	Greening/Vegetation Walkways Movement/Physical Tourism x 3 Heritage Creativity x 3 Aboriginal Place making Programmes Walkways Social/Residents Vibrancy	V3.1 SCP2.1.2 SCP5.1.5 V1.1 SCP5.2.1 V2.1 SCP4.2.1 SCP4.2.3 SCP2.4 V5.4 SCP3.1.1 SCP3.1.2 SCP3.1.3 SCP3.2.1 SCP5.1.5 V4.0 SCP5.2.1
		F Add a <u>pedestrian crossing point</u> at the junction of Doolan Street and Little Street	Design; Construct	Residents; Sponsors; Local Suppliers; Local Builders; MRWA; PTA	Pedestrian Crossing (Doolan and Little Street) *surfacing	Item	Low (<\$250K)	Community; Visitors; Government; Wildlife	✓	✓	✓	✓	✓	Greening/Vegetation Walkways Movement/Physical Tourism x 3 Heritage Creativity x 3 Aboriginal Place making Programmes Walkways Social/Residents Vibrancy	V3.1 SCP2.1.2 SCP5.1.5 V1.1 SCP5.2.1 V2.1 SCP4.2.1 SCP4.2.3 SCP2.4 V5.4 SCP3.1.1 SCP3.1.2 SCP3.1.3 SCP3.2.1 SCP5.1.5 V4.0 SCP5.2.1 V4.3
		G Give back to the environment by allowing planting spaces for diverse plants and greening impact via a 'Plants to Residents' Scheme. Increase shade through additional tree canopy	Plan; Procure; Implement	Associations; Landscape Architects; Suppliers; Education/Training	Plants to Residents Scheme *(human) resources, plants, soil etc Trees (with canopy) *Fruiting, endemics	Item	Low (<\$250K)	Community; Visitors; Wildlife	✓	✓	✓	✓	✓	Movement/Physical Walkways Greening/Vegetation Residents Social Programmes Vibrancy Place making	V1.1 SCP5.2.1 SCP5.1.5 V3.1 SCP2.1.2 V4.0 SCP5.1.6 V4.3 SCP3.2.1

PRIORITY	ACTION	CODE	OPPORTUNITY (aspirational)	TASKS	PARTNERSHIPS	INFRASTRUCTURE	UNIT	COST L/M/H	BENEFICIARIES	F	A	C	T	S	STRATEGY KEY WORD	STRATEGY CLAUSE
DP3 - Wayfinding										F	A	C	T	S		
The network of roads and public footpaths does not support intuitive wayfinding. The laneway footpath connecting Carramar Park and Hayward Street is narrow and fairly concealed from either end. On a positive note, wayfinding in town has begun thanks to the Dardanup Heritage Collective the Dardanup Heritage Trail signage and map. The blade corner signs will be features around town from the Post Office to the Bakery visibly linked to lead visitors from one to the next. The Ferguson Valley Public Art Trail will start in Dardanup townsite	Use art and signage to further support wayfinding	H	Additional wayfinding art could be dispersed around town to support pedestrian activation along the primary routes, just as the Dardanup Primary School's pavement mosaics activate the walk along Hayward Street. New shared pathways and existing public access ways (PAWs) could be defined by such ground in-lays or signposts, in sympathy with the Dardanup Heritage Trail in its materials and form	Design; Construct	Landscape Architects; Artists/Wayfinding Communications; Local Suppliers; Local Builders; Education/Training	Wayfinding eg Ground In-Lays *bespoke art	Item	Low (<\$250K)	Community, Visitors, Commerce	✓	✓	✓	✓		Tourism x3 Heritage Creativity x 3 Aboriginal Place making Vibrancy	2.1 SCP4.2.1 SCP4.2.3 SCP2.4 V5.4 SCP3.1.1 SCP3.1.2 SCP3.1.3 SCP3.2.1 V4.3
		I	Celebrate the entrance of the Public Access Ways (PAWs) from Carramar Park (to Hayward Street) to clearly mark its location, e.g. lighting, colour, archway, farm gate, community artwork, shade structure over the top of PAWs. This is so that people can see and find their way through the public realm	Design; Construct	Landscape Architects; Artists/Wayfinding Communications; Local Suppliers; Local Builders; Education/Training	Entrance at PAW Carramar Park *bespoke timber and/or metal art	Item	Medium (<\$1M)	Community, Visitors, Commerce; Government	✓	✓	✓	✓	✓	Safe Movement/Physical Creativity x 3 Walkways Social/Residents Place making	SCP3.4 SCP5.1.3 V5.4 SCP3.1.1 SCP3.1.2 SCP5.1.5 V4.0 SCP5.1.6 SCP3.2.1
DP4 - Diverse planting										F	A	C	T	S		
Decimation of biodiverse native planting cleared for farming has resulted in a rise in groundwater levels with seasonal flooding of Carramar Park. Greening is lacking in town, and so are street trees	Plant more native trees to replace previously removed trees	J	There are many places for forest groves of water sucking trees that suit the drainage issues and local character i.e. 'bring the orchard farms into town'. Species include Flooded Gums, Freshwater Paperbark, Wandoo, Kingia, Marri. Locations including parks, oval surrounds, nature trails, streets. Note that this works in summer	Design; Construct	Landscape Architects; Local Suppliers	Water Sucking Tree Groves *eg Eucalyptus rudis etc	Item	Medium (<\$1M)	Community; Visitors; Wildlife; Government	✓	✓	✓	✓		Greening/Vegetation Walkways Movement/Physical	V3.1 SCP2.1.2 SCP5.1.5 V1.1 SCP5.2.1
DSP1.2 - Eustace Fowler Park										F	A	C	T	S		
Eustace Fowler Park, with its prime location, has the potential to be a more useable and activated park for visitors and locals alike	Create a linear park that supports both local community and visitor needs. Note although the Shire does have a few things on the Reserve, anything new is subject to PTA/Arc Infrastructure review and approval	C	Create an appropriately themed recreation destination to attract tourists as a welcoming advertisement for the town with all the conveniences of a drivers' rest stop e.g. miniature train line winding through the trees, playful timber footbridges, barrels and bulls. Activate the rest area with big pots e.g. wine barrels and festoon lights. Consider MARKR signage	Design; Construct	Engineers; Landscape Architects; Local Suppliers	Drivers rest stop & park items *bespoke - proprietary	Item	High (>\$1M)	Community; Visitors; Commerce	✓	✓	✓	✓		Tourism x 3 Heritage Creativity x 3 Aboriginal Place making Programmes Walkways Social/Residents Movement/Physical	V2.1 SCP4.2.1 SCP4.2.3 SCP2.4 V5.4 SCP3.1.1 SCP3.1.2 SCP3.1.3 SCP3.2.1 SCP5.1.5
		D	Provide shelter and seating that appeal to all ages and abilities	Design; Construct	Engineers; Landscape Architects; Local Suppliers	Seating *bespoke - proprietary	Item	Medium (<\$1M)							V4.0 SCP5.2.1 V1.1 SCP5.2.1	

PRIORITY	ACTION	CODE	OPPORTUNITY (aspirational)	TASKS	PARTNERSHIPS	INFRASTRUCTURE	UNIT	COST L/M/H	BENEFICIARIES	F	A	C	T	S	STRATEGY KEY WORD	STRATEGY CLAUSE
DSP2.2 - Sympathetic choices										F	A	C	T	S		
The community value preserving memories and making sound new ones. Some precious places of historical importance have been lost and respecting what remains is vital to sustaining the character of Dardanup	Ensure new development and evolution are in sympathy with the existing built form	F	Establish formal <u>design guidelines</u> for the townsite (Built Form as well as Public Realm/Landscaping guidelines), including public realm improvements and new building materials in sympathy with the Dardanup character palette	Design; Construct	Engineers; Architects; Landscape Architects;	Formal Design Guidelines using the Materials Palettes enclosed *(human) resources	Item	Excluded	Community; Visitors; Commerce; Government; Consultants	✓	✓	✓	✓	✓	Buildings Creativity x 3 Heritage Place making	V3.3 V5.4 SCP3.1.1 SCP3.1.2 SCP2.4 SCP3.2.1
DSP2.3 - Carramar Park landscaping										F	A	C	T	S		
Carramar Park is a much loved and well-used community play area that is reaching the end of its material life (refer to Play Audit for details). With the opening to the town hall site to the north, Carramar Park will be truly connected to all areas of Dardanup. Grassed and shaded by mature trees, the park is used all-year round, but due to drainage issues it floods in winter	Integrate drainage improvements in new landscaping	G	Integrate <u>drainage solutions</u> (likely traditional subsoil and pipe based) in the park to address the winter drainage issues	Design; Construct	Engineers; Landscape Architects;	Drainage *subsoil, pipes, biomedica, plants	Item	High (>\$1M)	Community; Visitors; Commerce; Government; Wildlife	✓	✓	✓	✓	✓	Greening/Vegetation Walkways Movement/Physical Vibrancy	V3.1 SCP2.1.2 SCP5.1.5 V1.1 SCP5.2.1 V4.3
		H	<u>Build up paths</u> connecting to slightly raised play equipment to create level access to play areas even during raised winter water levels	Design; Construct	Engineers; Landscape Architects;	Raised Paths *bespoke, timber, steel	Item	High (>\$1M)	Community; Visitors; Commerce; Government	✓	✓	✓	✓	✓	Walkways Movement/Physical Vibrancy	SCP5.1.5 V1.1 SCP5.2.1 V4.3
				Design; Construct	Landscape Architects; Local Suppliers; Education/Training	Raised Play Equipment *bespoke, timber, steel, concrete, softfall	Item	Medium (<\$1M)	Community; Visitors; Commerce; Government	✓	✓	✓	✓	✓	Movement/Physical Vibrancy Place making Social/Residents	V1.1 SCP5.2.1 V4.3 SCP3.2.1 V4.0 SCP5.1.6
DSP2.4 - Carramar Park playground										F	A	C	T	S		
The existing play equipment is non-descript, standard coloured that could be anywhere in Western Australia. The existing play equipment is reaching the end of its material life (refer to Playground Audit for details)	Create a quality public realm that locals can relate to	I	Create a themed regional <u>playground</u> e.g. agriculture references, railways and export. Think an “organised and maintained back yard for everyone” with <u>shelter</u> , social <u>outdoor furniture</u> , slide mounds, <u>lighting</u> , and shady <u>trees</u> . Fully <u>fence a playground</u> area appropriate to various age ranges, including for children with special needs. Potentially remove the Community Centre fence and <u>integrate</u> landscaping into Carramar Park. Note it is important that play is for ALL ages, inclusive and fosters health.	Design; Construct	Engineers; Landscape Architects; Local Suppliers	Shade Structure *bespoke, timber, steel	Item	High (>\$1M)	Community; Visitors; Commerce	✓	✓	✓	✓	✓	Creativity x 3 Building Heritage Social/Residents Place making	V5.4 SCP3.1.1 SCP3.1.2 V3.3 SCP2.4 V4.0 SCP5.1.6 SCP3.2.1
				Design; Construct	Landscape Architects; Local Suppliers	Outdoor Furniture (eg Table Settings, BBQ, Bins) *bespoke - proprietary	Item	Medium (<\$1M)	Community; Visitors; Commerce; Government	✓	✓	✓	✓	✓	Creativity x 3 Building Heritage Social/Residents Place making	V5.4 SCP3.1.1 SCP3.1.2 V3.3 SCP2.4 V4.0 SCP5.1.6 SCP3.2.1

PRIORITY	ACTION	CODE	OPPORTUNITY (aspirational)	TASKS	PARTNERSHIPS	INFRASTRUCTURE	UNIT	COST L/M/H	BENEFICIARIES	F	A	C	T	S	STRATEGY KEY WORD	STRATEGY CLAUSE
				Design; Construct	Landscape Architects; Local Suppliers; Education/Training	Themed Play Equipment (eg tractors, barrels, rail, water play etc) *bespoke, timber, steel, concrete, softfall	Item	High (>\$1M)	Community; Visitors; Commerce; Government	✓	✓	✓	✓	✓	Tourism x 3 Creativity x 3 Social/Residents Vibrancy Place making	V2.1 SCP4.2.1 SCP4.2.3 V5.4 SCP3.1.1 SCP3.1.2 V4.0 SCP5.1.6 V4.3 SCP3.2.1
				Design; Construct	Landscape Architects; Local Suppliers	Lighting *proprietary	Item	Medium (<\$1M)	Community; Visitors; Commerce; Government	✓	✓	✓	✓	✓	Technologies Safe	V5.5 SCP3.4
														F	A	C
DSP2.6 - South-east corner of Carramar Park																
<i>The south-east corner of Carramar Park is currently underutilised with little passive surveillance. The perimeter fences are to private back gardens with no security</i>	Support the legitimate activation of this sapce for informal ball games, picnics and play. Protect the back garden fences with a perimeter barrier of defensive planting	M	Redesign south-east section of Carramar Park to create a <u>small oval</u> , providing an informal grassed area for ball games	Design; Construct	Engineers; Landscape Architects; Local Suppliers	Small Grassed Oval *landcaping	Item	High (>\$1M)	Community; Visitors; Commerce; Government	✓	✓	✓			Movement/Physical Vibrancy Place making Social/Residents	V1.1 SCP5.2.1 V4.3 SCP3.2.1 V4.0 SCP5.1.6
		N	Include <u>planting along fence line</u> to protect adjacent fences from sound and damage	Design; Construct	Engineers; Landscape Architects; Local Suppliers	Planting *landcaping	Item	Low (<\$250K)	Community; Visitors; Commerce; Government; Wildlife	✓	✓	✓			Greening/Vegetation Walkways Movement/Physical	V3.1 SCP2.1.2 SCP5.1.5 V1.1 SCP5.2.1

PRIORITY	ACTION	CODE	OPPORTUNITY (aspirational)	TASKS	PARTNERSHIPS	INFRASTRUCTURE	UNIT	COST L/M/H	BENEFICIARIES	F	A	C	T	S	STRATEGY KEY WORD	STRATEGY CLAUSE
DSP3.2 - Shelter in Wells Recreation Reserve										F	A	C	T	S		
<i>Mature trees offer some shelter, but the precinct would benefit from additional shelter to meet the needs of the spectators at sports matches and festival-goers</i>	Create more sheltered seating around the edge of the Reserve	C	If the skatepark is relocated, its site could be repurposed as an arrival gateway from Dardanup townsite, with <u>shade shelter</u> , signage, seating, and lighting	Design; Construct	Engineers; Landscape Architects; Local Suppliers	Shade Structure *bespoke, timber, steel, vines	Item	Medium (<\$1M)	Community; Visitors; Commerce; Government	✓	✓	✓	✓		Building Creativity x 3 Social/Residents Place making	V3.3 V5.4 SCP3.1.1 SCP3.1.2 V4.0 SCP5.1.6 SCP3.2.1
		D	Install <u>lighting</u> for event games	Design; Construct	Engineers; Landscape Architects; Local Suppliers	Lighting *proprietary or bespoke, timber, steel, powdercoat	Item	Medium (<\$1M)	Community; Visitors; Commerce; Government		✓	✓	✓		Safe Tourism x 3 Creativity x 3 Social/Residents Vibrancy	SCP3.4 V2.1 SCP4.2.1 SCP4.2.3 V5.4 SCP3.1.1 SCP3.1.2 V4.0 SCP5.1.6 V4.3
		E	Add a <u>small fenced playground</u> adjacent new clubrooms	Design; Construct	Engineers; Landscape Architects; Local Suppliers; Education/Training	Fenced play *bespoke, timber, steel	Item	Medium (<\$1M)	Community; Visitors; Commerce; Government	✓	✓	✓	✓		Creativity x 3 Social/Residents Place making	V5.4 SCP3.1.1 SCP3.1.2 V4.0 SCP5.1.6 SCP3.2.1
		F	<u>Complete path</u> /cycleway all around perimeter of oval	Design; Construct	Engineers; Landscape Architects; Local Suppliers	Path *proprietary	Item	Medium (<\$1M)	Community; Visitors; Commerce; Government	✓		✓	✓		Technologies Safe	V5.5 SCP3.4
		G	<u>Tree</u> planting on western side of oval	Design; Install	Engineers; Landscape Architects; Local Suppliers; Education/Training	Trees, soil etc *refer list	Item	Low (<\$250K)	Community; Visitors; Commerce; Government	✓	✓	✓	✓	✓	Greening/Vegetation	V3.1
		H	<u>Refurbish or extend clubrooms</u> . The new toilets and changerooms building has been recently built	Design; Build	Engineers; Landscape Architects; Local Suppliers; Education/Training	Clubrooms Upgrade *building materials	Item	High (>\$1M)	Community; Visitors; Commerce; Government	✓	✓	✓	✓	✓	Building Social/Residential Tourism x 3 Place making Exchange	V3.3 V4.0 SCP5.1.6 V2.1 SCP4.2.1 SCP4.2.3 SCP3.2.1 SCP4.1.1

PRIORITY	ACTION	CODE OPPORTUNITY (aspirational)	TASKS	PARTNERSHIPS	INFRASTRUCTURE	UNIT	COST L/M/H	BENEFICIARIES	F	A	C	T	S	STRATEGY KEY WORD	STRATEGY CLAUSE																																																																																																																																																																																																																																																																																																																																																																																																																																																																																																															
BUILT ENVIRONMENT																																																																																																																																																																																																																																																																																																																																																																																																																																																																																																																														
DP1 - North-south connections in town																																																																																																																																																																																																																																																																																																																																																																																																																																																																																																																														
Connecting the three sub-precincts is needed to support movement and walkability, increase activation of the streets and support the social connectedness associated with the village character of Dardanup	Improve the north-south permeability through the town	A	The proposed opening up of the Civic Precinct to Carramar Park will start to assist to create a much-desired central connection through the townsite. However, more is needed, including a permeable link (visual and movement) right through from Ferguson Road to Hayward Street. This luckily lines up north-south, thus keeping this north-south 300m long linear corridor open/free of obstacles. It will be level, clearly marked, fun, themed, tree-lined, and safe to move through i.e. well lit etc. This requires moving the old toilets and fences etc. Also see D1 i.e. traffic calming on Ferguson Road just north of the town hall	Design; Demolition	Planners; Architects; Local Contractors and Recyclers	Demolition, Lighting *etc	Item	Medium (<\$1M)	Community; Visitors; Commerce	✓	✓	✓	✓	✓	Waste Technologies	V3.2																																																																																																																																																																																																																																																																																																																																																																																																																																																																																																														

PRIORITY	ACTION	CODE OPPORTUNITY (aspirational)	TASKS	PARTNERSHIPS	INFRASTRUCTURE	UNIT	COST L/M/H	BENEFICIARIES	F	A	C	T	S	STRATEGY KEY WORD	STRATEGY CLAUSE
DSP2.1 - Dardanup Hall									F	A	C	T	S		
<i>Dardanup Hall doesn't have the attractive alfresco area to spill out into; the public toilets to the rear constrain the connection to the new play trail to Carramar Park, and would benefit from a material upgrade</i>	Upgrade the forecourt to Dardanup Hall to create an attractive, shaded 'front veranda' with designated hard-standing and softening planted beds and trees, to support a variety of activation	A	Invest in the physical transformation of <u>Dardanup Hall and the Shire Office</u> to support a wider range of activation for all ages and abilities	Design; Construct	Planners; Architects; Local Contractors	Dardanup Hall Upgrades *built form	Item Low (<\$250K)	Community; Visitors; Commerce; Government	✓	✓	✓	✓	✓	Heritage Building Social/Residential Tourism x 3 Place making Exchange	SCP2.4 V3.3 V4.0 SCP5.1.6 V2.1 SCP4.2.1 SCP4.2.3 SCP3.2.1 SCP4.1.1
		B	Rebuild the public toilets to include a <u>Changing Places Toilet</u> to support people of all levels of mobility	Design; Construct	Planners; Architects;	Changing Places Toilet (Dardanup Hall) *proprietary	Item Medium (<\$1M)		✓	✓	✓	✓	✓	Building Social/Residential Safe Tourism x 3	V3.3 V4.0 SCP5.1.6 SCP3.4 V2.1 SCP4.2.1 SCP4.2.3
		C	Alfresco space for outdoor <u>music/cinema, food trucks</u> and classic <u>car meets</u> etc. Support the activation of the new play area by bringing in a coffee van and/or light food at regular times of the day to meet community needs. Alternatively, consider the viability of a permanent café in the front of Dardanup Hall, advertised on Ferguson Road	Design; Construct	Planners; Architects; Local Vendors	Alfresco Entertainment Vendor Space (Dardanup Hall) *hardstand, timber etc	Item Low (<\$250K)	Community; Visitors; Commerce; Government	✓	✓	✓	✓	✓	Food Tourism x 3 Creativity x 3 Vibrancy Social/Residential Place making Movement/Physical Safe Heritage Exchange	V2.2 V2.1 SCP4.2.1 SCP4.2.3 V5.4 SCP3.1.1 SCP3.1.2 V4.3 V4.0 SCP5.1.6 SCP3.2.1 V1.1 SCP5.2.1 SCP3.4 SCP2.4 SCP4.1.1
		D	Extend the natural features of the nature play trail into the car park to break up the expanse of asphalt e.g. <u>trees and planted beds</u> . The eastern side of the Dardanup Hall is priority 1	Design; Construct	Engineers; Landscape Architects; Local Suppliers; Contractors	Softening/Higher Priority area (front of Dardanup Hall) *landscaping & building, continuity to suit built form	Item Medium (<\$1M)	Community; Visitors; Commerce; Government	✓	✓	✓	✓	✓	Greening/Vegetation Movement/Physical Vibrancy Tourism x 3 Walkways Social/Residential	V3.1 SCP2.1.2 V1.1 SCP5.2.1 V4.3 V2.1 SCP4.2.1 SCP4.2.3 SCP5.1.5 V4.0 SCP5.1.6
		E	Extend the natural features of the nature play trail into the car park to break up the expanse of asphalt e.g. <u>trees and planted beds</u> . The western side of the Dardanup Hall is priority 2	Design; Construct	Engineers; Landscape Architects; Local Suppliers; Contractors	Softening/Lower Priority area (front of Dardanup Hall) *landscaping & building, continuity to suit built form	Item Medium (<\$1M)	Community; Visitors; Commerce; Government; Wildlife	✓	✓	✓	✓	✓	Greening/Vegetation Movement/Physical Vibrancy Tourism x 3 Walkways Social/Residential	V3.1 SCP2.1.2 V1.1 SCP5.2.1 V4.3 V2.1 SCP4.2.1 SCP4.2.3 SCP5.1.5 V4.0 SCP5.1.6

APPENDICES

APPENDIX A

SMART TECHNOLOGY SUMMARY TABLE

WOVEN-IN OPPORTUNITIES TO ASSIST IN THE DELIVERY OF FACILITIES AND SERVICES

This is set this out as a table of options to put to the community to gauge level of support/interest.

Dardanup Smart Technology Opportunity Initiatives	
Area	Details
Signage	Virtual signage (eg “MARKR” https://www.markrsystems.com/) Significant Heritage Places (properties and assets) will feature QR codes on interpretation signs
Art/creativity	Art technology Informal cinema art projections on the Dardanup Hall, could use Adobe Dreamweaver The mural could be an image of the town water tank
Public realm (includes Streetscape)	Smart benches LED lighting on sensors
Play	Miniature rail play High-tech skatepark eg cameras videoing tricks, apps and signs
Agriculture	Manufacturing/processing Local food ordering via a town app
Energy	Energy cluster PV cells Charging ports

Dardanup Smart Technology Opportunity Initiatives	
Solar	Solar road paint Solar building/sign paint
Engineering/ environment	Drainage technology like new pipes and bridges etc Flood gauges Rain sensors
Recycled materials	Recycled materials components (RMC) Reclaimed asphalt pavement (RAP) Recycled concrete aggregate (RCA) Environmentally friendly cement (EFC)
Travel/sport	E-scoot initiatives eg trails to school and Electronic scoreboard
Built form	Sustainable building/accommodation
Waste	World class waste management at the local point eg “Containers For Change” in the schools Smart bins with capacity sensors Recycling vans

APPENDIX B

MONITORING AND REVIEW

Date	Review	Action	Approval

65

KEY FINDINGS – COMMUNITY WISHLIST (FACILITIES BY LOCATION)

Precinct 1 – Townsite

Sub-precinct 1 – Commercial

Town Centre

- Create facilities and attractions to bring tourists to the area
- More facilities and encouragement for small businesses to move to the area
- Develop civic building in timely manner
- Speed up the development of facilities, source more funding

Sub-precinct 2 – Civic

Town Hall

- Upgrade the town hall and its facilities, it requires funding
- Demolish the old toilet, and replace
- There is a need for a courtyard, with outdoor storage
- Open the town hall to address the park on the eastern side
- Include an art mural on town hall wall

Shire Office

- We use this space (should be known that it's not "former" ie it's still active)
- Bathroom in council building needs upgrading
- The heritage inventory needs to be reviewed more often
- Tourism must be addressed by the Shire

Proposed Civic Centre

- Request for a café or specialty retail at civic centre to encourage people to stop and enjoy park

Carramar Park

- Signage needed to indicate Carramar Park to people travelling along highway
- Improve drainage
- Carramar Park to be done properly to create a central hub for all residents to be proud of

Sub-precinct 3 – Recreation

Wells Recreation Reserve

- Playgroup to be moved to Wells Recreation Reserve when renovated/extended, needs analysis must be assessed prior

"We need to grow the story of our town through improvements/developments that add character"

"We need to showcase town features reflective and inviting to attract people, we value history, there's not enough to identify who/where we are, no defining features"

"Rural residential areas add special dimension and rural character must be maintained and not change"

"We need to get it right in Carramar Park! See the whole of Carramar Park is under water in winter"

KEY FINDINGS – COMMUNITY WISHLIST (TOPICS AND THEMES)

SAFE AND CONNECTED

Circulation, Safety and Infrastructure

Traffic slowing

- Ferguson Rd, Hayward St, near town entry near Boyanup-Picton Rd and on Crooked Brook Rd

Crossing Roads and Pathways

- Requested throughout town centre, particularly on Ferguson Rd
- Lollypop for school requested
- Kids walks' requested
- Safe travel for kids along/across busy roads
- Better options for cyclists, horse riders to explore the area
- More gravel/horse bush tracks along main roads
- More walkways were requested, existing footpaths to be updated, particularly pathways to and from schools to the main street/hall/sports places

"We need safe travel for kids, more gravel/horse bush tracks along highways and main roads"

Transport

- There is a need for more bus stops

Road works

- Issues in all directions (Martin Pelusey Rd and BORR works southern side started, Garvey Rd)
- Improve bitumen roads that circle the town
- Pits in Ferguson Rd need fixing

Parking

- Acquire paddock for extra recreation and sports parking
- More parking options along the main street

Drainage and Water

- Improve drainage in public areas, particularly in car parks and Carramar Park
- Upgrade water supply

Waste

- Get rid of the landfill tip (and the heavy vehicles that service it)
- Change the location of the landfill tip

"Aren't we just known as the town with the tip?"

CELEBRATING LOCAL

Environment and Open Space

Vegetation

- Street trees on verges are needed

Open Space

- Parks and reserves need to be accessible to all/ages, inclusive, useful for variety of purposes, somewhere people want to stop on their way through
- Stop using quality farming land for housing

Facilities (Sport, Commercial, Play)

Community

- New community resource centre to provide low or no cost services accessible for all demographics (build community)
- The women want more network catchups and events

"Stop using quality farming land for housing etc"

GATEWAY TO FERGUSON VALLEY

Tourism, Growth, Heritage and Culture

Installations

- Tourism: visual attraction, art murals to bring visitors to town
- Gateway Marker: additional sculptures are requested (e.g. south of St Marys Church)
- Art: include an art mural on town hall wall

Heritage

- Heritage Centre: along with library in old council offices
- St Mary's Church: adaptive reuse opportunities needed

"We need to connect all the central parts of the town to encourage both locals and visitors to enjoy our town safely"

Stakeholder Workshops | 10 May 2022



APPENDIX D

PLANT SPECIES

Scientific Name	Common Name	Selection Statement
TREES - NATIVE		
<i>Corymbia calophylla</i>	Marri	Good park tree (but not recommended as street tree due to fruit trip/slip hazard) because it does not drop limbs nor shed bark, has slow to moderate growth rate, does not require training, has attractive aesthetics including flower, provides shade, has shallow roots thus won't damage roads nor paths
<i>Corymbia citriodora</i>	Lemon-Scented Gum	Good large park tree (not recommended as a street tree due to limb dropping) where it provides shade, attractive tall grace, fauna habitat especially roosting of birds, and fast growth rate
<i>Corymbia ficifolia</i>	Red Flowering Gum	Good park and street tree because it does not drop limbs nor shed bark, has a slow growth rate and does not get too tall, does not require training, has attractive aesthetics including vibrant signature flower colour, provides shade, has shallow roots thus won't damage roads nor paths
<i>Corymbia maculata</i>	Spotted Gum	Good park and street tree especially an avenue tree because it does not drop limbs nor shed bark, has a fast growth rate, has attractive tall grace, does not require training, attractive aesthetics including signature patterned bark, provides shade
<i>Eucalyptus gomphocephala</i>	Tuart	Good park tree (but not recommended as street tree due to size) because it does not drop limbs nor shed bark, has slow to moderate growth rate, does not require training, has attractive aesthetics including shiny leaves and ice-cream cone shaped fruit, provides shade and fauna habitat for over 50 species
<i>Eucalyptus marginata</i>	Jarraah	Good park tree (and acceptable street tree to be considered for some locations) because it does not drop limbs nor shed bark, has a slow to moderate growth rate, shade provision, fauna habitat
<i>Eucalyptus platypus</i> or <i>utilis</i>	Moort	Good park and street tree because it does not drop limbs nor shed bark, has a slow growth rate and does not get too tall, does not require training, has attractive aesthetics including dense habit, provides shade and fauna habitat especially water birds, has shallow roots thus won't damage roads nor paths
<i>Eucalyptus rudis</i>	Flooded Gum	Good river park tree because it does not drop limbs nor shed bark, has a slow to moderate growth rate, does not require training, has attractive aesthetics including branched habit and leaf colour, provides shade and fauna habitat, good in the wet zones where it grows tall and grand
<i>Melaleuca rhaphiophylla</i>	Freshwater Paperbark	Good river park tree because it does not drop limbs, has a slow to moderate growth rate, does not require training, has attractive aesthetics including compact habit, provides shade and fauna habitat, good in the wet zones

Scientific Name	Common Name	Selection Statement
TREES - EXOTIC		
<i>Acer species</i>	Maple	Good park and street tree especially avenue tree due to reliable and consistent shape and growth rate, medium size and attractive foliage colours, examples are planted at Station Park in Donnybrook
<i>Fraxinus griffithii</i>	Flowering Ash	Good civic and street tree especially avenue tree due to reliable and consistent shape and growth rate, shade provision and medium size and attractive foliage and flower colour in combination
<i>Fraxinus raywoodii</i>	Claret Ash	Perfect park and street tree especially avenue tree due to reliable and consistent shape and growth rate, medium size and attractive foliage colour, has shallow roots thus won't damage roads nor paths
<i>Ginkgo biloba</i>	Maidenhair Tree	Good park and street tree especially avenue tree due to reliable and consistent shape and growth rate, medium size and attractive green to yellow foliage colour
<i>Olea 'Swan Hill'</i>	Olive (non-fruiting)	Good street tree (but not a shady avenue tree) due to small to medium size, slower growth rate, and lack of fruit drop in this variety which is generally sterile, has shallow roots thus won't damage roads nor paths
<i>Sapium sebiferum</i>	Chinese Tallow	Good park and street tree due to reliable and consistent shape and growth rate, medium size and attractive foliage colour that changes from green to orange and red throughout the year
<i>Ulmus lutescens</i>	Golden Elm	Good park and street tree especially avenue tree due to reliable and consistent shape and growth rate, medium size and attractive golden yellow foliage colour
SHRUBS, GRASSES and GROUND COVERS		
<i>Carex species</i>	Sedge	Good small compact tufted strap-leaved ornamental light green grass for planters and rockeries that requires no trimming nor dead-heading, continually performs well and suits all other plants when mixed in due to its good tone and texture
<i>Dianella species</i>	Flax Lily	Good small compact tufted strap-leaved ornamental deep lush green grass that requires no trimming nor dead-heading, continually performs well and suits all other plants when mixed in due to its good tone and texture
<i>Hypocalymma species</i>	Pink-flowering Myrtle	Good medium compact-form shrub with attractive lacey flowers that requires no trimming
<i>Melaleuca incana</i>	Dwarf Honey Myrtle	Good small compact-form shrub that requires no trimming, continually performs well and suits all other plants when mixed in due to its good tone and texture
<i>Metrosideros Dalese</i>	NZ Christmas Bush	Good small compact-form shrub that requires no trimming, continually performs well and suits all other plants when mixed in due to its good tone and texture
EDIBLE GARDENS		
<i>Aloysia citriodora</i>	Lemon Verbena	Good medium compact-form shrub that requires no trimming and has attractive arching flowers and edible pointy leaves for making tea, tisanes, liqueurs, cooking, potpurri, perfumes and cosmetics
<i>Basella alba</i>	Edible spinach vine	Good climbing or trailing plant that will scramble over any ground with its lush green edible spinach-like leaves that require no maintenance and can be used in cooking and salads
<i>Rosmarinus officinalis</i>	Rosemary	Good medium compact-form shrub that requires no trimming nor dead-heading and it gets naturally pruned by humans as they pluck it for use in cooking and baking
<i>Tetragonia tetraganoides</i>	Warrigal Greens	Good climbing or trailing plant that will scramble over any ground with its lush green edible spinach-like leaves that require no maintenance and can be used in cooking and salads

APPENDIX E

PLAYGROUND AUDIT

1

CARRAMAR PARK PLAY AUDIT - OVERVIEW

The playground audit is based on assets as listed in the Shire of Dardanup's *Carramar Park Assets*, received on 7 July 2022. The audit takes into consideration the following criteria, in relation to each identified play element:

- Condition
- Base life / design life.
- Estimated renewal year of play asset.
- General appeal and suitability of each play element and resulting play experience.
- Inclusive play (high level only and a certified audit in relation to inclusive and accessibility would be required)
- Materiality
- Type of play element, i.e proprietary, bespoke, fixed, structured / unstructured.
- Compatibility with the proposed future Place Plan for Dardanup.

Please note:

- This is not a safety audit and a safety inspection of the equipment has not been undertaken as part of this audit.
- This audit is separate from the Shire of Dardanup's internal procedures in relation to asset management.
- Where base life has been exceeded, asset has been highlighted orange.

High level findings suggest that play assets of Carramar Park are either beyond their base life estimate or are within two to five years of reaching their limit. It is therefore recommended that the whole of Carramar Park to be considered as part of a holistic play revitalization and upgrade and not upgraded ad-hoc through the replacement of individual assets. This would provide greater value for money and a more aspirational and meaningful play destination for locals and visitors to enjoy.

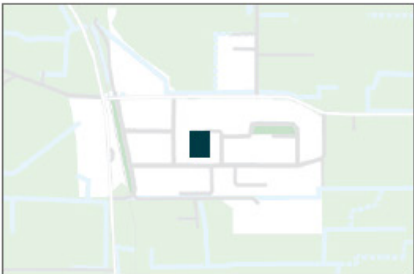
This would also enable the future park to be considered in relation to the proposed Dardanup Place Plan, including development of a local park narrative informed by a coordinated play, material, planting and colour strategy.

The provision of play opportunities for youth are minimal, apart from the basketball hoop and concrete hardstand, with a greater focus on junior play experiences. Therefore the inclusion of a skate, bike and scooter area, as well as parkour opportunities would be of great benefit to the youth of Dardanup.

A greater variety of play experiences that respond to physical, imaginary, exploitative and loose parts opportunities will be important and reduce the current focus on generic, fixed proprietary play equipment. Use of local and natural materials that can be reused and re-purposed is encouraged.

Finally, succession tree planting to Carramar Park to secure future shading to play and open space areas is critical in managing aging mature remnant trees. Suitable small shrub and groundcover planting to assist with winter water logged areas and contribute to a natural play setting is also an important consideration.

CARRAMAR PARK PLAY AUDIT - SITEPLAN



Location Plan for Carramar Park, Dardarup

Key	
1	PP756, PP756, PP864: Circuit with navigation bollards (six posts)
2	PP856 & PP857: Boat and Train themed rockers (two rockers)
3	PP855: Swing on metal frame
4	PP860: Play station 01 (stair, slide, chain joiner, flying fox)
5	PP859: Play station 02 (activity panels, ramps, slides, monkey bars, ring bars, flying fox, pommel walker, ship front)
6	PP836 & PP837: Basket ball hoop and concrete slab
7	PP850: Shade Structure with picnic benches. (BBQ facilities to south)
	Park extent
	Park access
	Parking area
Please refer to the playground audit for information relating to scuffall, shade sails, and main shelter. All additional supporting furniture and fixtures is captured in SoD asset management register.	



Aerial view of Carramar Park, Dardarup.



ASPECT STUDIOS PLAYGROUND AUDIT - CARRAMAR PARK JULY 2022

Status Existing
 Category Level Community Park Level 2
 Category Community Park
 System Name Carramar Park

SoD Asset ID	Asset Group	Asset Type	Asset Sub Type	Material	Make	Model	Unit rate Code	Qty	Unit	Description	Play benefit	Target Age Group	Inst Date Comment	Install Date	Locality
Carramar Park Play Items															
PP860	Playground Equipment	Play Structure	Carramar	Metal and Plastic	Forpark Australia	None	Playground Equipment Play Structure Carramar	1	Each	Playstation 01: Combined fixed play element. see table below for play features.		Junior +4yrs	Kidsafe playground audit 2012	6/30/1999	DARDANUP
PP859	Playground Equipment	Play Structure	WS14-2036	Metal and Plastic	Forpark Australia	None	Playground Equipment Play Structure WS14-2036	1	Each	Play Station 02: Combined fixed play element see table below for play features.		Junior +4yrs	Renewal project expenditure/Grant J11521 2008/9	6/30/2009	DARDANUP
PP856	Playground Equipment	Single Rocker	Boat	Metal	Forpark Australia	SE51	Playground Equipment Single Rocker Boat	1	Each	Blue Boat	motor skills, balance and coordination.	Junior	Kidsafe playground audit 2012	6/30/1999	DARDANUP
PP857	Playground Equipment	Single Rocker	Train	Metal	Forpark Australia	SE50	Playground Equipment Single Rocker Train	1	Each	Red Train	motor skills, balance and coordination.	Junior	Kidsafe playground audit 2012	6/30/1999	DARDANUP
PP858	Playground Equipment	Double Rocker	None	Metal	None	None	Playground Equipment Double Rocker None	1	Each	TBC	TBC	Junior	Kidsafe playground audit 2012	6/30/1999	DARDANUP
PP837	Sporting Infrastructure	Basketball Hoop and Backboard	None	Wood and Metal	None	None	Sporting Equipment Basketball Hoop and Backboard None	1	Each	Basketball hoop and backboard	motor skills, balance and coordination, endurance, team sport.	Junior +9 and Youth	Renewal project expenditure/Grant J11521 2008/9	6/30/2009	DARDANUP
PP836	Sporting Infrastructure	Hardstand	Basketball half court concrete	Concrete	None	None	Sporting Equipment Hardstand Basketball half court concrete	118	m2	Concrete hardstand			Renewal project expenditure/Grant J11521 2008/9	6/30/2009	DARDANUP
PP756	Structure	Bollards	Treated Pine 150mm x 1.5m	Wood	None	None	Structure Bollards Treated Pine 150mm x 1.5m	25	m	2x red, 1x blue, 1x yellow and 2x green. (associated colour with asset ID to be confirmed).	Children weave through post while on trike, bike, scooter etc.	Junior		6/30/1992	DARDANUP

Asset Owner	Base Life	Condition	RefDate	Age	EST Renewal year	Renewal comment
Shire of Dardanup	15	Sound condition, however, evidence of aging and fading. Last Kidsafe playground audit 2012. Next Kidsafe playground audit to be confirmed by SoD.	6/30/2021	23	0	Nominated base life of 15 year. Eight years over baseline. Non-coastal fixed equipment with plastic and metal components design life generally between 12-15years. Opportunity to upgrade as part of whole of park, future play revitalisation, to responds to local character and themes, through mix of proprietary and bespoke items and use of more natural materials. to achieve more diverse and engaging play experiences.
Shire of Dardanup	15	Sound condition, however, evidence of some aging, better condition than Carramar Structure. Last Kidsafe playground audit not listed. SoD to confirmed and action as required.	6/30/2021	13	2	Kidsafe audit not listed. Nominated base life of 15 year. Currently two years under nominated baseline. Non-coastal fixed equipment with plastic and metal components design life generally between 12-15years. Opportunity to upgrade as part of whole of park, future play revitalisation, to responds to local character and themes, through a mix of proprietary and bespoke items and use of more natural materials to achieve more diverse and engaging play experiences.
Shire of Dardanup	20	Fair, faded plastic	6/30/2021	23	0	Nominated base life of 20yrs has been exceeded. Opportunity to replace this type of play experience, i.e rocking and balance with more bespoke item informed by local themes.
Shire of Dardanup	20	Fair, faded plastic	6/30/2021	23	0	Nominated base life of 20yrs has been exceeded. Opportunity to replace this type of play experience, i.e rocking and balance with a more bespoke item that responds to this relevant theme of trains.
Shire of Dardanup	20	TBC	6/30/2021	23	0	Asset location to be confirmed. Nominated baselife of 20yrs has been exceeded.
Shire of Dardanup	25	Sound, currently performs function	6/30/2021	13	12	Well within nominated base life design life, however, would predict upgrade sooner than 12 years. Opportunity to consider as part of whole of park, future play upgrade, in relation to use of multipurpose half court.
Shire of Dardanup	50		6/30/2021	13	37	Opportunity to provide half court markings, and artwork treatment to concrete hardstand to enable recognised half court team games. Additional markings for other games should be considered to increase multi-use.
Shire of Dardanup	30	Condition - dated, treated pine no longer used in this application.	6/30/2021	30	0	Nominated base life of 30yrs has been reach. Opportunity to remove and replace this type of play opportunity with a future integrated bike, scooter and skate pump track or circuit. Layout of track to accommodate different age groups. Materiality of track could be concrete, compacted gravel.

SoD Asset ID	Asset Group	Asset Type	Asset Sub Type	Material	Make	Model	Unit rate Code	Qty	Unit	Description	Play benefit	Target Age Group	Inst Date Comment	Install Date	Locality
PP757	Structure	Bollards	Treated Pine 150mm x 1.5m	Wood	None	None	Structure Bollards Treated Pine 150mm x 1.5m	34	m	2x red, 1x blue, 1x yellow and 2x green.	Children weave through post while on trike, bike, scooter etc.	Junior		6/30/1992	DARDANUP
PP864	Structure	Bollards	Treated Pine 150mm x 1.5m	Wood	None	None	Structure Bollards Treated Pine 150mm x 1.5m	9	m	2x red, 1x blue, 1x yellow and 2x green.	Children weave through post while on trike, bike, scooter etc.	Junior		6/30/1992	DARDANUP
PP855	Playground Equipment	Swing	T-Swing	Metal	None	None	Playground Equipment Swing T-Swing	1	Each	1x frame, 2 swings	motor skills, balance and coordination.	Junior	Kidsafe playground audit 2012	6/30/1999	DARDANUP
PP838	Playground Surrounds	Softfall	Synthetic	Rubber	None	None	Playground Surrounds Softfall Synthetic	52	m2	Black rubber softfall	Softfall from heights.		Renewal project expenditure/Grant J11521 2008/9	6/30/2009	DARDANUP
PP861	Playground Surrounds	Softfall	Synthetic	Rubber	None	None	Playground Surrounds Softfall Synthetic	200	m2	Black rubber softfall	Softfall from heights.		Renewal project expenditure/Grant J11521 2008/9	6/30/2009	DARDANUP
PP863	Playground Surrounds	Softfall	Synthetic	Rubber	None	None	Playground Surrounds Softfall Synthetic	140	m2	Black rubber softfall	Softfall from heights.		Renewal project expenditure/Grant J11521 2008/9	6/30/2009	DARDANUP
Carramar Park additional playground assets															
PP844	Playground Surrounds	Shade Sail	Cape Shade Sail	Canvas and Metal	None	None	Playground Surrounds Shade Sail Cape Shade Sail	1	Each	Light Yellow	Shades play area		Renewal project expenditure/Grant J11521 2008/9	6/30/2009	DARDANUP
PP845	Playground Surrounds	Shade Sail	Cape Shade Sail	Canvas and Metal	None	None	Playground Surrounds Shade Sail Cape Shade Sail	1	Each	Light Purple	Shades play area		Renewal project expenditure/Grant J11521 2008/9	6/30/2009	DARDANUP

Asset Owner	Base Life	Condition	RefDate	Age	EST Renewal year	Renewal comment
Shire of Dardanup	30	Condition - dated, treated pine no longer used in this application.	6/30/2021	30	0	Nominated base life of 30yrs has been reach. Opportunity to remove and replace this type of play opportunity with a future integrated bike, scooter and skate pump track or circuit. Layout of track to accommodate different age groups. Materiality of track could be concrete, compacted gravel.
Shire of Dardanup	30	Condition - dated, treated pine no longer used in this application.	6/30/2021	30	0	Nominated base life of 30yrs has been reach. Opportunity to remove and replace this type of play opportunity with a future integrated bike, scooter and skate pump track or circuit. Layout of track to accommodate different age groups. Materiality of track could be concrete, compacted gravel.
Shire of Dardanup	20	Sound condition, however, evidence of some aging.	44377	23	0	Nominated base life of 20yrs has been exceeded. Opportunity to replace this type of play experience, i.e swinging and motion with a more sophisticated proprietary item. Opportunity to explore diverse product range that allows for single, and group experiences as well as different accessibility requirements.
Shire of Dardanup	18	Sounds, repair patches in some locations.	6/30/2021	13	5	Within design base life however, to be considered as part of whole of park, future play upgrade. Opportunity to use more natural materials such as certified playground mulch, and sand (pending safety review by SoD), to support nature play, bespoke and locally themed play spaces. Ensure access to key play desintation in accordance with accessibility requirements.
Shire of Dardanup	18	Sounds, repair patches in some locations.	6/30/2021	13	5	Within design base life however, to be considered as part of whole of park, future play upgrade. Opportunity to use more natural materials such as certified playground mulch, and sand (pending safety review by SoD), to support nature play, bespoke and locally themed play spaces. Ensure access to key play desintation in accordance with accessibility requirements.
Shire of Dardanup	18	Sounds, repair patches in some locations.	6/30/2021	13	5	Within design base life however, to be considered as part of whole of park, future play upgrade. Opportunity to use more natural materials such as certified playground mulch, and sand (pending safety review by SoD), to support nature play, bespoke and locally themed play spaces. Ensure access to key play desintation in accordance with accessibility requirements.
Shire of Dardanup	15	Sound. Some discolouration from leaf debris and dirt from nearby tree, however this is expected.	6/30/2021	13	2	Shade sails are within design baseline, however, to be considered as part of whole of park, future play upgrade. Considerations include, future layout of play spaces, tree planting and where shade is required based on shade analysis. Colour palette does not respond to natural environment, reference should be made to Place Plan colour palette.
Shire of Dardanup	15	Sound. Some discolouration from leaf debris and dirt from nearby tree, however this is expected.	6/30/2021	13	2	Shade sails are within design baseline, however, to be considered as part of whole of park, future play upgrade. Considerations include, future layout of play spaces, tree planting and where shade is required based on shade analysis. Colour palette does not respond to natural environment, reference should be made to Place Plan colour palette.

SoD Asset ID	Asset Group	Asset Type	Asset Sub Type	Material	Make	Model	Unit rate Code	Qty	Unit	Description	Play benefit	Target Age Group	Inst Date Comment	Install Date	Locality
PP846	Playground Surrounds	Shade Sail	Cape Shade Sail	Canvas and Metal	None	None	Playground Surrounds Shade Sail Cape Shade Sail	1	Each	Light Yellow	Shades play area		Renewal project expenditure/Grant J11521 2008/9	6/30/2009	DARDANUP
PP847	Playground Surrounds	Shade Sail	Cape Shade Sail	Canvas and Metal	None	None	Playground Surrounds Shade Sail Cape Shade Sail	1	Each	Light Blue	Shades play area		Renewal project expenditure/Grant J11521 2008/9	6/30/2009	DARDANUP
PP848	Playground Surrounds	Shade Sail	Cape Shade Sail	Canvas and Metal	None	None	Playground Surrounds Shade Sail Cape Shade Sail	1	Each	Light Purple	Shades play area		Renewal project expenditure/Grant J11521 2008/9	6/30/2009	DARDANUP
PP849	Playground Surrounds	Shade Sail	Cape Shade Sail	Canvas and Metal	None	None	Playground Surrounds Shade Sail Cape Shade Sail	1	Each	Dark Blue	Shades play area		Renewal project expenditure/Grant J11521 2008/9	6/30/2009	DARDANUP
PP850	Structure	Shelter	Large Shelter 8X8m Wood	Wood and Metal	9x6m	None	Structure Shelter Large Shelter 8X8m Wood	1	Each		Shelter with seating within.			6/30/1992	DARDANUP
Carramar Park additional park assets (not park of playground audit).															
PP840	Structure	Hardstand	BBQ Concrete	Concrete	None	None	Structure Hardstand BBQ Concrete	17	m2				Renewal project expenditure/Grant J11521 2008/9	6/30/2009	DARDANUP
PP842	Structure	Hardstand	Bench Concrete	Concrete	None	None	Structure Hardstand Bench Concrete	2	m2				Renewal project expenditure/Grant J11521 2008/9	6/30/2009	DARDANUP
PP868	Structure	Hardstand	Bench Concrete	Concrete	None	None	Structure Hardstand Bench Concrete	2	m2				Renewal project expenditure/Grant J11521 2008/9	6/30/2009	DARDANUP
PP869	Structure	Hardstand	Bench Concrete	Concrete	None	None	Structure Hardstand Bench Concrete	1	Each				Renewal project expenditure/Grant J11521 2008/9	6/30/2009	DARDANUP

Asset Owner	Base Life	Condition	RefDate	Age	EST Renewal year	Renewal comment
Shire of Dardanup	15	Sound. Some discolouration from leaf debris and dirt from nearby tree, however this is expected.	6/30/2021	13	2	Shade sails are within design baseline, however, to be considered as part of whole of park, future play upgrade. Considerations include, future layout of play spaces, tree planting and where shade is required based on shade analysis. Colour palette does not respond to natural environment, reference should be made to Place Plan colour palette.
Shire of Dardanup	15	Sound. Some discolouration from leaf debris and dirt from nearby tree, however this is expected.	6/30/2021	13	2	Shade sails are within design baseline, however, to be considered as part of whole of park, future play upgrade. Considerations include, future layout of play spaces, tree planting and where shade is required based on shade analysis. Colour palette does not respond to natural environment, reference should be made to Place Plan colour palette.
Shire of Dardanup	15	Sound. Some discolouration from leaf debris and dirt from nearby tree, however this is expected.	6/30/2021	13	2	Shade sails are within design baseline, however, to be considered as part of whole of park, future play upgrade. Considerations include, future layout of play spaces, tree planting and where shade is required based on shade analysis. Colour palette does not respond to natural environment, reference should be made to Place Plan colour palette.
Shire of Dardanup	15	Sound. Some discolouration from leaf debris and dirt from nearby tree, however this is expected.	6/30/2021	13	2	Shade sails are within design baseline, however, to be considered as part of whole of park, future play upgrade. Considerations include, future layout of play spaces, tree planting and where shade is required based on shade analysis. Colour palette does not respond to natural environment, reference should be made to Place Plan colour palette.
Shire of Dardanup	33	Colorbond roof with timber post shade structured. Use of bold alternating colours. Roof colour fading, timber posts and picket-like fence to periphery of structure is dated. Colour palette does not respond to natural environment.	6/30/2021	30	3	Large shelter within design base life, however to be considered as part of whole of park future upgrade. Function, form, location and aesthetic to be considered in relation to Place Plan proposed materials palette and type of amenity required to support park users.
Shire of Dardanup	50		6/30/2021	13	37	
Shire of Dardanup	50		6/30/2021	13	37	
Shire of Dardanup	50		6/30/2021	13	37	
Shire of Dardanup	50		6/30/2021	13	37	

SoD Asset ID	Asset Group	Asset Type	Asset Sub Type	Material	Make	Model	Unit rate Code	Qty	Unit	Description	Play benefit	Target Age Group	Inst Date Comment	Install Date	Locality
PP870	Structure	Hardstand	Bench Concrete	Concrete	None	None	Structure Hardstand Bench Concrete	2	m2				Renewal project expenditure/Grant J11521 2008/9	6/30/2009	DARDANUP
PP862	Structure	Hardstand	Ramp	Concrete	None	None	Structure Hardstand Ramp	4.5	m2				Renewal project expenditure/Grant J11521 2008/9	6/30/2009	DARDANUP
PP839	Structure	Hardstand	Shelter Concrete	Concrete	None	None	Structure Hardstand Shelter Concrete	47	m2					6/30/1992	DARDANUP
PP851	Park Furniture	BBQ	BBQ Single	Brick & Metal	Christie Parksafe	None	Park Furniture BBQ BBQ Single	1	Each	Electrict			Renewal project expenditure/Grant J11521 2008/9	6/30/2009	DARDANUP
PP843	Park Furniture	Bench	Quality High Wood	Wood and Metal	None	None	Park Furniture Bench Quality High Wood	1	Each				Renewal project expenditure/Grant J11521 2008/9	6/30/2009	DARDANUP
PP866	Park Furniture	Bench	Quality High Wood	Wood and Metal	None	None	Park Furniture Bench Quality High Wood	1	Each				Renewal project expenditure/Grant J11521 2008/9	6/30/2009	DARDANUP
PP867	Park Furniture	Bench	Quality High Wood	Wood and Metal	None	None	Park Furniture Bench Quality High Wood	1	Each				Renewal project expenditure/Grant J11521 2008/9	6/30/2009	DARDANUP
PP871	Park Furniture	Bench	Quality High Wood	Wood and Metal	None	None	Park Furniture Bench Quality High Wood	1	Each				Renewal project expenditure/Grant J11521 2008/9	6/30/2009	DARDANUP
PP852	Park Furniture	Bike Rack	None	Metal	None	None	Park Furniture Bike Rack None	1	Each				Renewal project expenditure/Grant J11521 2008/9	6/30/2009	DARDANUP
PP865	Park Furniture	Park Sign	Park Entrance Sign	Wood	None	None	Park Furniture Park Sign Park Entrance Sign	1	Each				Renewal project expenditure/Grant J11521 2008/9	6/30/2009	DARDANUP
PP853	Park Furniture	Picnic Table	None	Wood and Metal	None	None	Park Furniture Picnic Table None	1	Each					6/30/1992	DARDANUP

Asset Owner	Base Life	Condition	RefDate	Age	EST Renewal year	Renewal comment
Shire of Dardanup	50		6/30/2021	13	37	
Shire of Dardanup	50		6/30/2021	13	37	
Shire of Dardanup	50		6/30/2021	30	20	
Shire of Dardanup	28		6/30/2021	13	15	
Shire of Dardanup	25		6/30/2021	13	12	
Shire of Dardanup	25		6/30/2021	13	12	
Shire of Dardanup	25		6/30/2021	13	12	
Shire of Dardanup	25		6/30/2021	13	12	
Shire of Dardanup	25		6/30/2021	13	12	
Shire of Dardanup	15		6/30/2021	13	2	
Shire of Dardanup	25		6/30/2021	30	0	

SoD Asset ID	Asset Group	Asset Type	Asset Sub Type	Material	Make	Model	Unit rate Code	Qty	Unit	Description	Play benefit	Target Age Group	Inst Date Comment	Install Date	Locality
PP854	Park Furniture	Picnic Table	None	Wood and Metal	None	None	Park Furniture Picnic Table None	1	Each					6/30/1992	DARDANUP
PP841	Playground Surrounds	Retaining Wall	Limestone	Limestone	2 x courses	None	Playground Surrounds Retaining Wall Limestone	57.63	m				Renewal project expenditure/Grant J11521 2008/9	6/30/2009	DARDANUP

Asset Owner	Base Life	Condition	RefDate	Age	EST Renewal year	Renewal comment
Shire of Dardanup	25		6/30/2021	30	0	
Shire of Dardanup	80		6/30/2021	13	67	

Playstation 01 - Combined fixed play element made up of the below items.	
Description	Play benefit
Metal rung stair with platform	motor skills, balance and coordination.
Plastic slide with platform	motor skills, balance and coordination.
Cargo chain net joiner	Coordination, balance, agility and problem solving skills to cross the net joiner
flying fox with 2x platforms	Coordination motor skills, upper body strength, balance and coordination.
Pommel seats swing	motor skills, upper body strength, balance and coordination, strength

Play Station 02: Combined fixed play element made up of the below items.	
Description	Play benefit
Ground level accessible and sensory activities. Naughts and crosses, sensory panel, target panel	Inclusivity, imaginary play, cognitive learning.
Ramp inclined with landings.	Inclusivity, motor skills, balance and coordination
Activity panel of clock on second landing on ramp	Imaginary play, cognitive learning.
Metal chain net joiner	motor skills, balance and coordination, strength
Plastic climbing façade	motor skills, balance and coordination, strength
Plastic slides	balance and coordination
Metal rung stair with platform	motor skills, balance and coordination, strength
Shop front	Inclusivity, imaginary play, communication and socialisation
Flying fox with platforms	motor skills, balance and coordination, strength
Pommel walker	motor skills, balance and coordination, strength
Ring bars	Upper body strength, coordination
Monkey bars	Upper body strength, coordination

IMAGE CREDITS

OPPORTUNITIES TABLES

Image Credits - Opportunities Tables

1	https://www.watoday.com.au/national/western-australia/margaret-river-tourism-operator-snaps-mindblowing-photos-of-claret-ash-trees-20170503-gvy3sd.html
2	https://reconnectrochester.org/southeast/2015/09/18/what-is-traffic-calming/
3	https://sfitzpatrick81f0.myportfolio.com/crosswalk-designs
4	https://www.cam.ac.uk/research/news/children-who-walk-to-school-less-likely-to-be-overweight-or-obese-study-suggests https://news.griffith.edu.au/2016/06/23/new-plan-to-boost-numbers-walking-to-school/
5	https://www.trekkingwest.com/australia/collingwood-farmers-market/
6	https://www.mamaknowsnorth.com.au/family-experiences/collingwood-childrens-farm-abbotsford
7	https://sfitzpatrick81f0.myportfolio.com/crosswalk-designs
8	pending
9	https://polishexpress.com.au/outdoor-cinema-at-sydney-olympic-park/
10	https://ridescollective.com/biggest-car-shows-in-california/
11	https://www.timeout.com/melbourne/shopping/collingwood-childrens-farm-farmers-market
12	https://www.walesonline.co.uk/news/wales-news/cardiff-street-parties-when-24143825
13	https://party.austinparks.org/#iLightbox[gallery_image_1]/3
14	Quentin Gore instagram

Image Credits - Opportunities Tables

15	https://macaal.org/en/exhibitions/al-maaden-sculpture-park
16	https://nadour.org/collection/moataz-nasr-under-fire/
17	https://twitter.com/SheffPA/status/1407269649285324801
18	http://www.danthonia.com.au/local-government-signs/city-and-town-entry-signs/mary-valley-welcome-sign.html
19	http://www.danthonia.com.au/local-government-signs/city-and-town-entry-signs/mary-valley-welcome-sign.html
20	https://www.facebook.com/dell.dardanup/
21	https://rac.com.au/about-rac/advocating-change/initiatives/reconnect-wa/launched-projects
22	https://rac.com.au/about-rac/advocating-change/initiatives/reconnect-wa/launched-projects
23	https://westcycle.org.au/ppmp_update
24	element
25	https://universaldesignaustralia.net.au/cities-people-love-letting-children-play/
26	https://www.pinterest.com.au/pin/516365913508719784
27	https://www.kalamunda.wa.gov.au/our-city/ceremonies-community-initiatives/plants-for-residents
28	https://www.brightonandhovenews.org/2017/11/06/happenstance/
29	https://www.geograph.org.uk/photo/2828720

Image Credits - Opportunities Tables	
30	https://busycitykids.com.au/our-blog/2015/9/2/ianpotter-childrensgarden
31	http://settonfarms.com/inside-setton/farming
32	https://www.wcngg.com/2020/09/17/organic-pistachio-production-at-nichols-farms/
33	https://www.dreamstime.com/photos-images/eucalyptus-grove.html
34	https://ceres.org.au/social-enterprises/venue-hire/weddings/wedding-venues/
35	https://www.istockphoto.com/photo/father-with-little-daughter-walking-to-school-or-daycare-gm491598918-75825325
36	Avid Property – from Outdoor Design Source magazine (latest)
37	https://www.streetsforpeople.org.au/
38	Cuernavaca Railroad Mexico
39	Marysville Dylan Dodds
40	https://www.bibbulmuntrack.org.au/trip-planner/accommodation-services/dwellingup-history-visitor-information-centre
41	Gather Coast Australia instagram
42	Verandah - Photo by Calum MacAulay on Unsplash
43	Street bar - Photo by S O C I A L . C U T on Unsplash
44	Photo by Brisbane Local Marketing on Unsplash
45	Jackman and McRoss Bakery Tasmania
46	https://www.brookings.edu/blog/the-avenue/2018/10/30/what-is-transformative-placemaking/
47	https://www.westernaustralia.com/en/VisitorCentre/Dwellingup_Trails_and_Visitor_Centre/56b268b3d5f1565045dabddd
48	https://www.studyinternational.com/online/
49	https://www.robertsday.com.au/projects/perry-lakes/
50	https://www.weekendsherpa.com/stories/hike-among-wildflowers-at-coyote-valley-open-space-preserve-near-san-jose/
51	https://www.mammaknowsnorth.com.au/parks-and-playgrounds/royal-park-nature
52	https://www.visitgainesville.com/dine/restaurant/4th-ave-food-park/

Image Credits - Opportunities Tables	
53	https://landezine.com/smartinski-park-playground-by-luz/
54	https://www.instagram.com/imagination.play/?hl=en
55	https://www.instagram.com/vanrytindustries/
56	https://www.outdoordesign.com.au/news-info/2021-victoria-landscape-architecture-awards/8613.htm
57	https://www.richter-spielgeraete.de/en/play-spaces/the-gathering-place-of-tulsa-usa/
58	https://www.liverpool.nsw.gov.au/venues/parks-and-playgrounds/skate-parks
59	https://skatesculpture.com.au/projects/forrestfield-youth-space/
60	https://skatesculpture.com.au/projects/forrestfield-youth-space/
61	https://m.facebook.com/BloomfieldLivableStreets
62	https://sydney.org.au/wp-content/uploads/2021/12/Committee-for-Sydney-Public-Space-Ideas-November-2020.pdf
63	https://www.archiexpo.com/prod/microarquitectura/product-66163-2225330.html
64	https://www.pinterest.com.au/pin/369013763217636838/
65	http://www.natureinspiredplaygrounds.com.au/blog/2017/2/13/clermont-daycare-stage-3
66	https://dardanupheritagecollective.org.au/sites-of-interest/dardanup-townsite/dardanup-post-office/
67	https://raisingchildren.net.au/guides/activity-guides/out-and-about/museum-activities
68	https://raisingchildren.net.au/guides/activity-guides/out-and-about/museum-activities
69	http://www.rhorii.com/bayareaparks/CoyoteCreekTrail/CoyoteCreekTrail.html
70	https://www.pinterest.com.au/pin/225883737534454798

IMAGE CREDITS PALETTES

Image Credits - Palettes	
Dardanup Overall Masterplan	
i	Steel blades (https://fineartamerica.com/featured/farm-windmill-farm-friends-laura-duhaime.html?product=acrylic-print&epik=dj0yJnU9c2VxQ0FpUEo4MWVAcEJqTy0xR1ZTSjJOZGo2OHI5bmMmcD0wJm49WkVjU3RRV1ZlUHhXZVVnTGRxbmZUZYz0PUFBQUFBROxldVJB)
ii	Corten steel columns (reference pending)
iii	Corrugated/colorbond (steeldezeen.com/2017/12/04/kansas-state-university-architecture-students-el-dorado-waldo-duplex-affordable-home-missouri/)
iv	Prairie planting with unsealed gravel path (https://landezine-award.com/museum-peter-august-bockstiegel/)
v	Green pastures (reference pending)
vi	Eucalyptus lane-poolei (https://www.flickr.com/photos/58828131@N07/26700508013)
Dardanup Precinct Plan	
vii	Rustic, earth tones bricks (reference pending)
viii	Corten steel columns (reference pending)
ix	Historic rail tracks within cobbles pavers (http://divisare.com/projects/194409-fugmann-janotta-landschaftsarchitekten-park-am-nordbahnhof)
x	Autumn tones and deciduous feature trees (https://www.frasergallopestate.com.au/events/Claret-Ash-Tour)
xi	Native grasses (reference pending)
xii	Eucalyptus rudis_Flooded Gum (https://www.flickr.com/photos/trillian421979/2307219201/)

Image Credits - Palettes	
Dardanup Commercial Sub-precinct Plan	
xiii	Milk cans – steel (https://www.flickr.com/photos/trillian421979/2307219201/)
xiv	Perforated steel with timber (https://i.pinimg.com/originals/3c/5b/0c/3c5b0c74fbd58fd2a6e2c1e91b93b21c.jpg)
xv	Historic rail tracks within cobbles pavers (http://divisare.com/projects/194409-fugmann-janotta-landschaftsarchitekten-park-am-nordbahnhof)
xvi	Planting in Corten raised planters (http://gardenally.blogspot.com/2011/11/downtown-views.html)
xvii	Re-purpose agricultural elements in public realm (reference pending)
xviii	Vitis sp. Ornamental Grape (https://www.thetutuguru.com.au/shop/vitis-crimson-glory-ornamental-vine-3-pot-copy/)
Dardanup Civic Sub-precinct Plan (including Carramar Park)	
xix	Red and/or recycled brick (https://www.jpb-group.net/)
xx	Compacted decomposed granite or similar (https://www.smartstonelandscape.com.au/helensvale/product/deco-granite/)
xxi	Manicured plants (reference pending)
xxii	Roses (reference pending)
xxiii	Corten steel perforated (https://www.archilovers.com/projects/156625/city-library-bruges-gallery?1317941)
xxiv	Autumn tones and deciduous feature trees (https://urbantreegrowers.com.au/product/claret-ash/)
xxv	Natural stone boulders (https://i.pinimg.com/originals/9a/10/f3/9a10f384815232fa00bd0378d4645b6a.jpg)

Image Credits - Palettes	
xxvi	Timber decking (https://trends.archiexpo.com/kebony/project-83512-236841.html)
xxvii	Concrete skate / scooter circuit (https://www.ridemypark.com/spot/boissy-le-chatel-skatepark/)
xxviii	Grass area, timber steppers, stone. (https://www.guymerbailley.com.au/bellbowrie-kindy)
xxix	Native planting in mulch (http://revivelandscaping.com.au/our-services/softscapes/)
xxx	Large stone steppers (https://www.designer.com/news/amp/29005)
Dardanup Recreation Sub-precinct Plan	
xxxi	Timber / modwood https://landezine.com/feysine-park-by-iles-paysage-urbanisme/
xxxii	Recycled timber poles (https://i.pinimg.com/originals/f3/e1/e9/f3e1e95e4addd453437725d514041f8.jpg)
xxxiii	Powder coated steel elements, coloured colorbond steel. (https://landezine.com/heerenschurli-sport-complex-by-topotek1/)
xxxiv	Turf sporting field (https://commons.wikimedia.org/wiki/File:Swifts_creek_football_oval.jpg)
xxxv	Avenue deciduous trees (https://landezine.com/the-natural-park-of-pelissier-by-atelier-arcadie/)
xxxvi	Ephemeral planting (https://fleetwoodurban.com.au/project/thornton-riparian-corridor/)

element.

the art and science of place

Level 18, 191 St Georges Tce, Perth WA 6000

T. (08) 9289 8300 – **E.** hello@elementwa.com.au

elementwa.com.au