



Australian Government



**BUILDING OUR FUTURE**

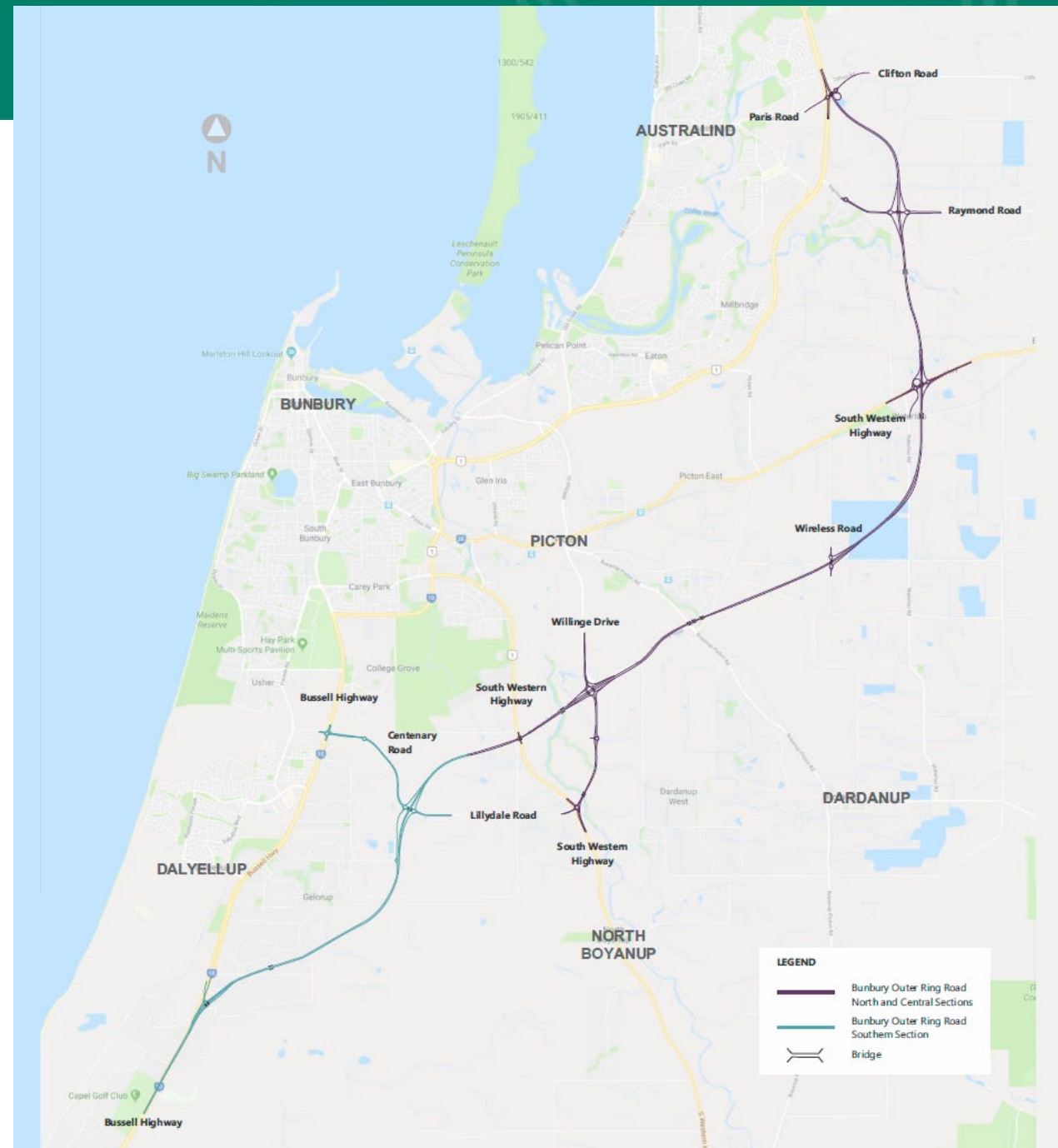
# **Bunbury Outer Ring Road (BORR)**

Shire of Dardanup – Roadwise Committee  
24 March 2021

# Project Development

## What is Bunbury Outer Ring Road?

- \$852M Project Budget (80% Commonwealth, 20% State Government)
- 27km long, seven interchanges
- Direct connection between Forrest Highway (near Australind) to Bussell Highway (near Stratham)
- Improved Access to Bunbury Port
- Planned to freeway standard: grade separated / control of access
- Central section opened 2013 (Bunbury Port Access Project)



## Why is it needed?



- Existing Freight Network is convoluted and impacts upon freight efficiency
- Mixing of freight and regional movements with local traffic negatively impacts upon safety, amenity, tourism and urban development
- Improve utilisation of existing industrial areas and development of industrial expansion areas



## Key Project Benefits



- ✓ 15 minute travel time saving
- ✓ 13 sets of traffic lights and 1 rail level crossing skipped
- ✓ Improved Safety and Amenity
- ✓ Improved port access
- ✓ Freight efficiency – free flowing
- ✓ Reliable journey times
- ✓ Access for Tourism
- ✓ Trucks off local roads

## Options – BORR / Bussell Hwy



Interchange Option – not currently funded

Y-junction also being investigated



At-grade Option



## Options – Principal Shared Path

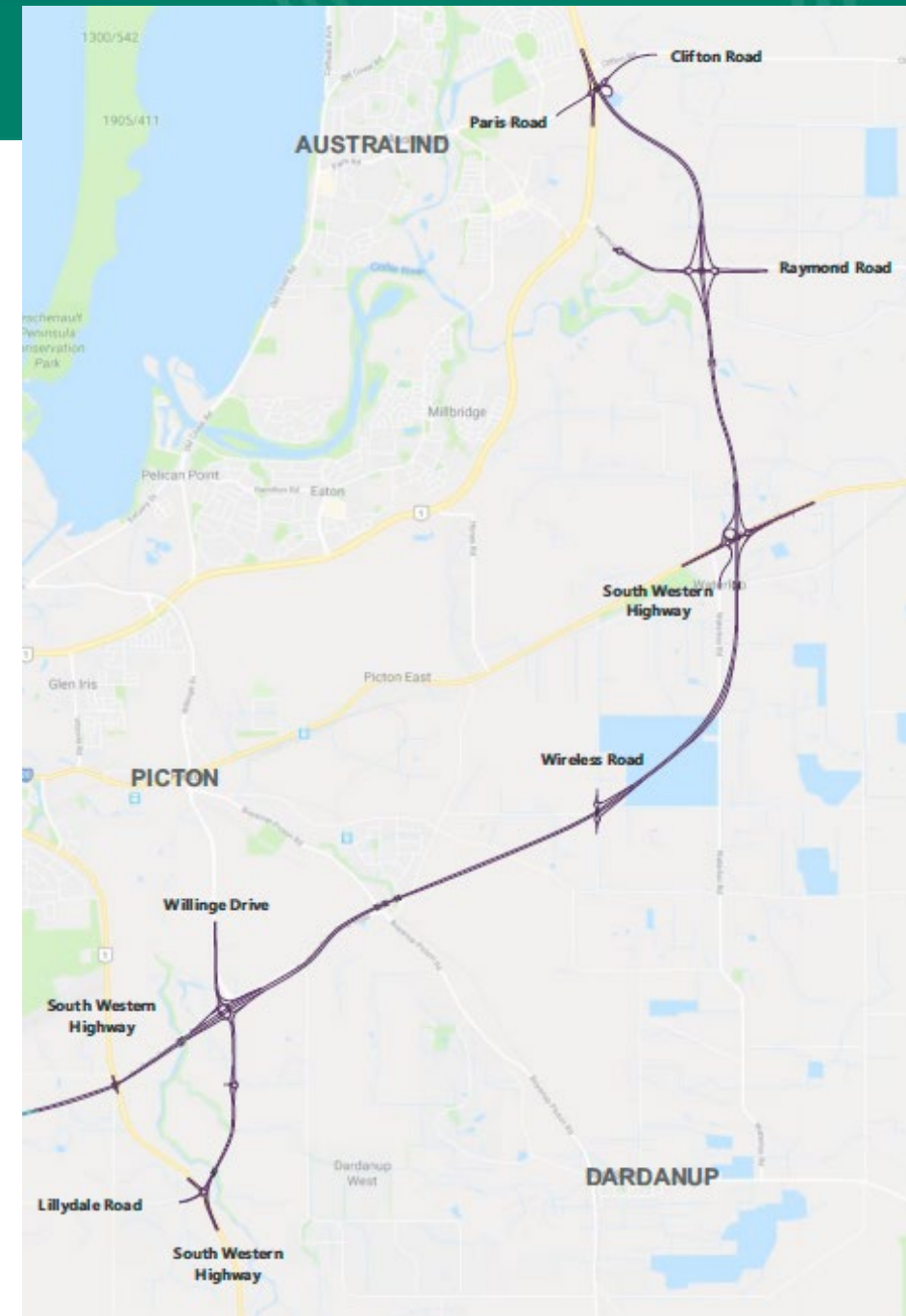
- Full length grade-separated PSP not currently funded
- Review of path network underway - engage with stakeholders and determine optimum solution
- May result in:
  - Different network with part of ultimate constructed
  - Enhanced local connections
  - PSP without underpasses at local connections

# Environmental Assessment Process

Split into two sections

## Northern & Central Sections:

- EPA (state)
  - Approval received 14 December 2020
- DAWE (federal)
  - Approval received 21 December 2020

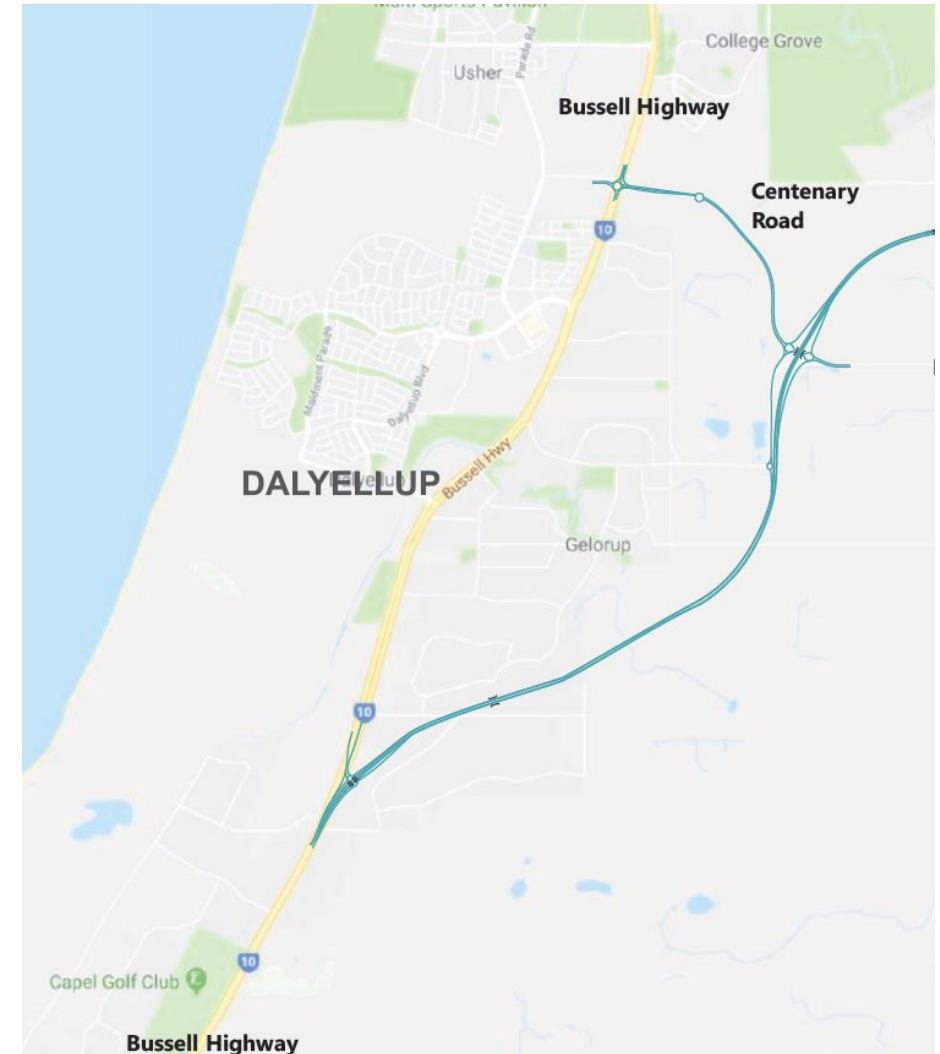




# Environmental Assessment Process

## Southern Section:

- EPA (state)
  - Public comment period closed 14 Dec 2020
  - 998 submissions received
  - EPA visited the site on 5 March 2021
  - Next step – EPA to issue draft report
- DAWE (federal)
  - Public comment period closed 18 Dec 2020
  - 82 submissions received
- Conditional approval anticipated late 2021



## Heritage Approvals

- Section 18 approval for North/Central received on 3 February 2021
- Section 18 applications being prepared for Southern Section – to be submitted soon
- Approval issued after environmental approval



## Planning Approvals

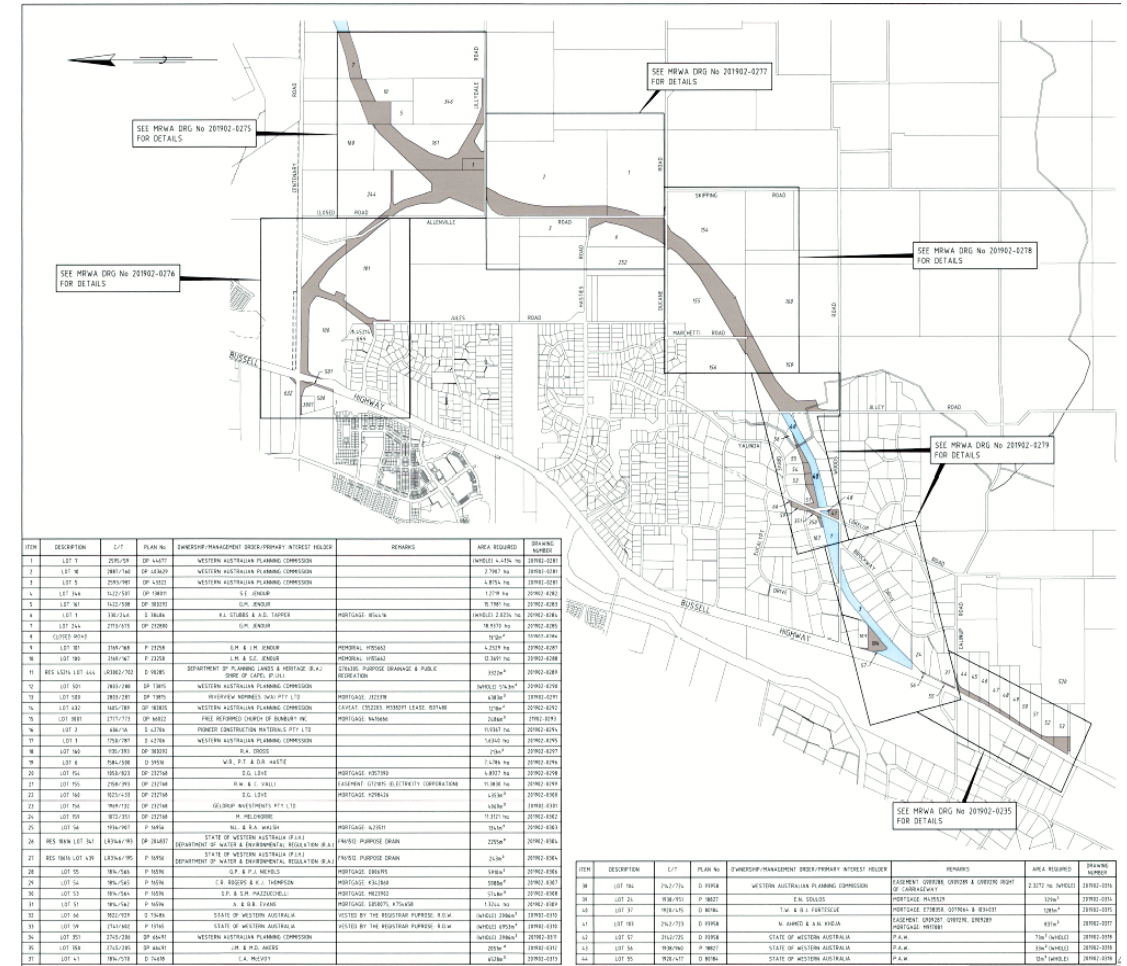
- Planning Control Area gazetted April 2020.
- Development Application for Northern and Central Section approval received 17 Dec 2020.
- DAs for Southern Section to be lodged soon.
- Approval issued after environmental approval



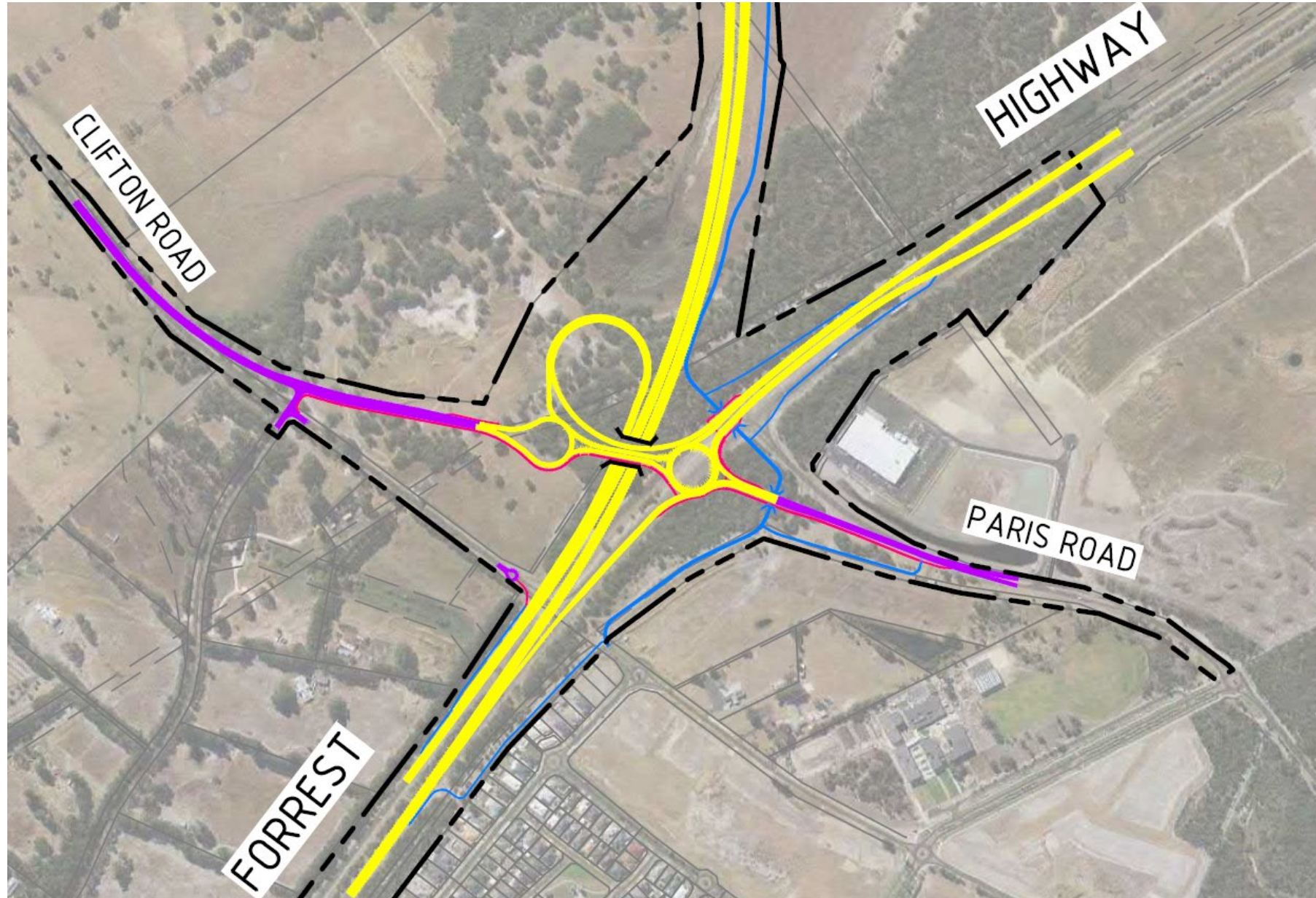


# Land Acquisition

- 97 privately owned properties required from 81 land owners
- Settlement reached with 41 land owners
- Negotiations ongoing with remainder
- Access to land occurring progressively

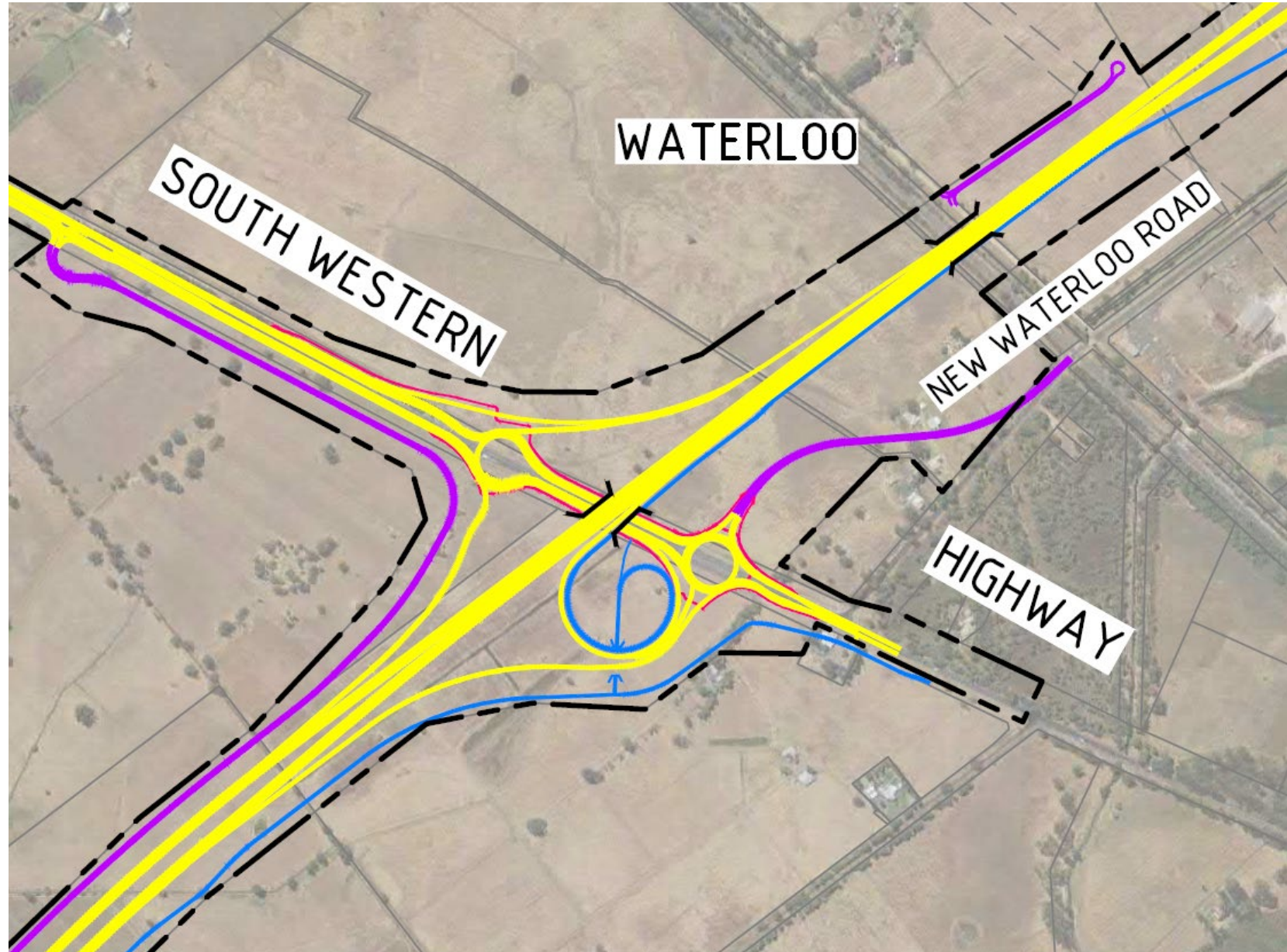


# Design / Safe Systems



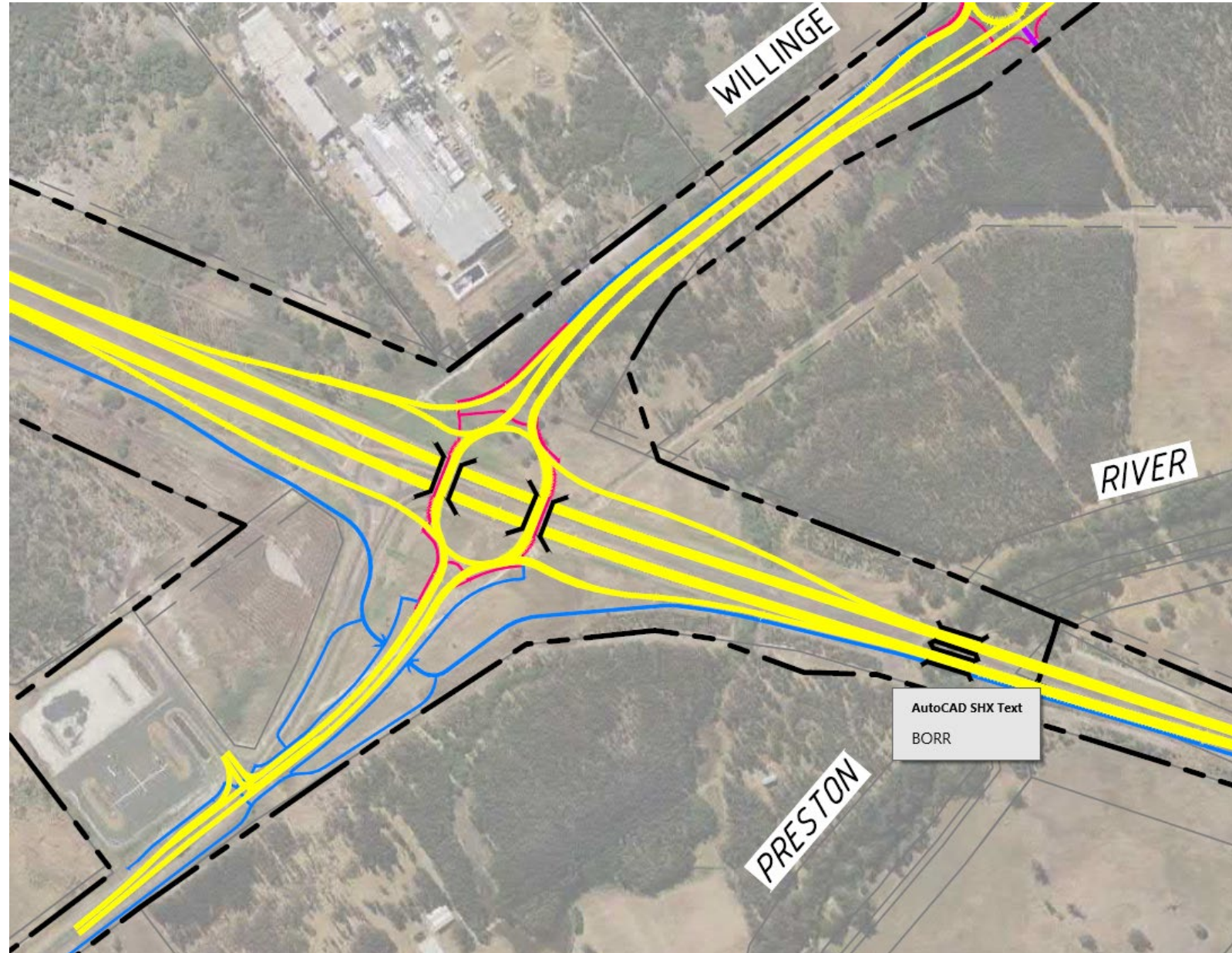


# Design / Safe Systems



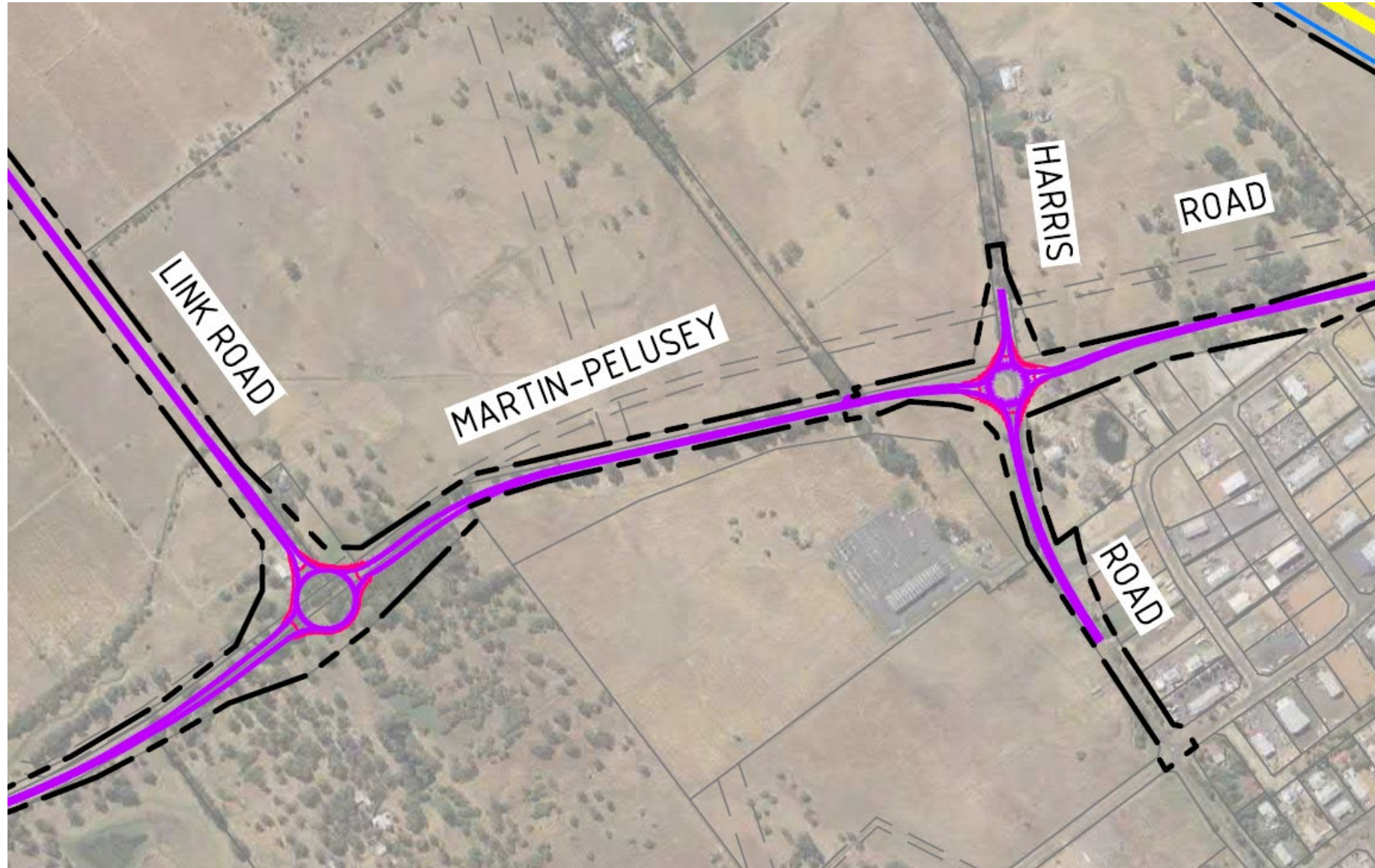


# Design / Safe Systems





# Design / Safe Systems





Australian Government



**BUILDING OUR FUTURE**

# Project Delivery



## Procurement Process

- Contract awarded on 12 October 2020.
- Alliance known as **South West Gateway Alliance**
- Made up of Acciona, NRW Contracting, MACA Civil, Aecom, Aurecon and Main Roads.
- Ground breaking ceremony held on 29 Jan 2021



OP



Constructor NOPs



Designer NOPs



## Design and Construction

- Design in progress
- Construction commenced 24 Feb 2021 on two fronts:
  - Willinge Drive extension
  - Raymond Road interchange

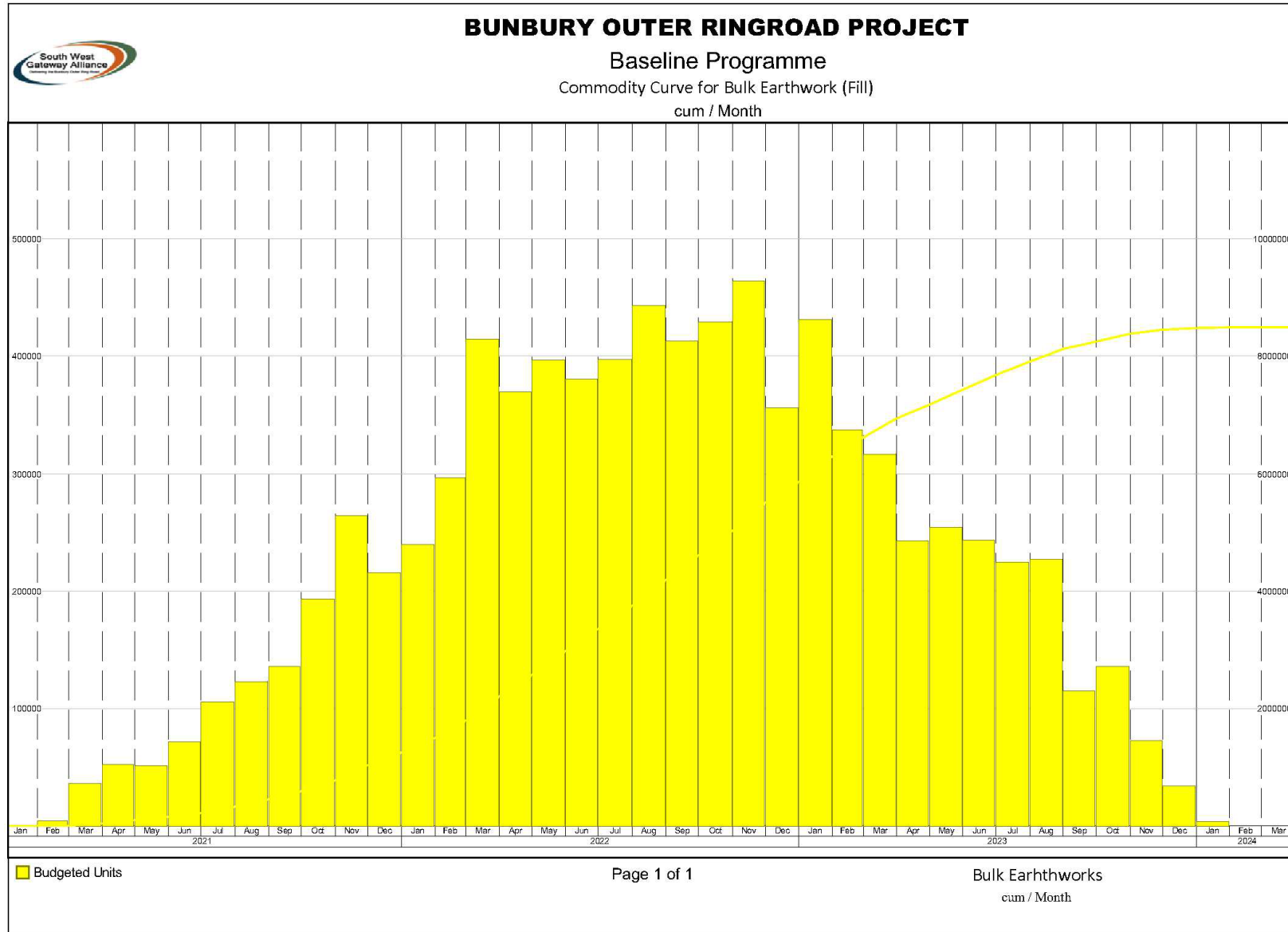




# High Level Program

BUNBURY OUTER RING ROAD

ACTIVITY	2020				2021				2022				2023				2024			
	Q1	Q2	Q3	Q4	Q1	Q2	Q3	Q4	Q1	Q2	Q3	Q4	Q1	Q2	Q3	Q4	Q1	Q2	Q3	Q4
Procurement	█																			
Approvals - North/Central	█				█															
Approvals - South	█				█															
Land - North/Central	█																			
Land - South	█				█															
DCT Approval				█	█															
Early Works (subject to approvals)					█															
Construction - North/Central						█	█	█	█	█	█	█	█	█	█	█	█	█	█	█
Construction - South								█	█	█	█	█	█	█	█	█	█	█	█	█
Landscaping & Revegetation														█	█	█				█





# Questions?

